
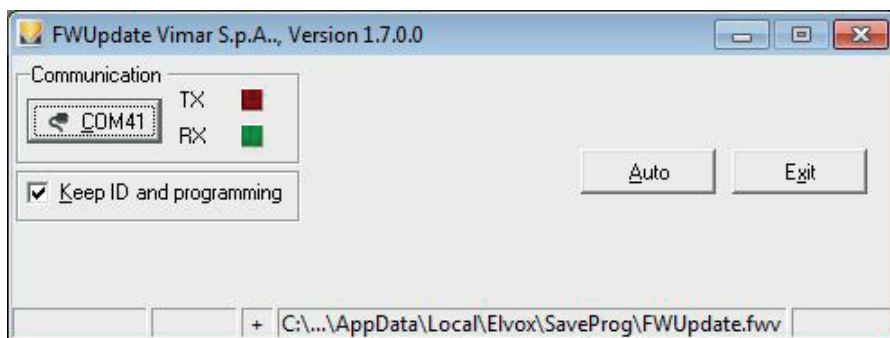


User Manual

FWUpdate Software

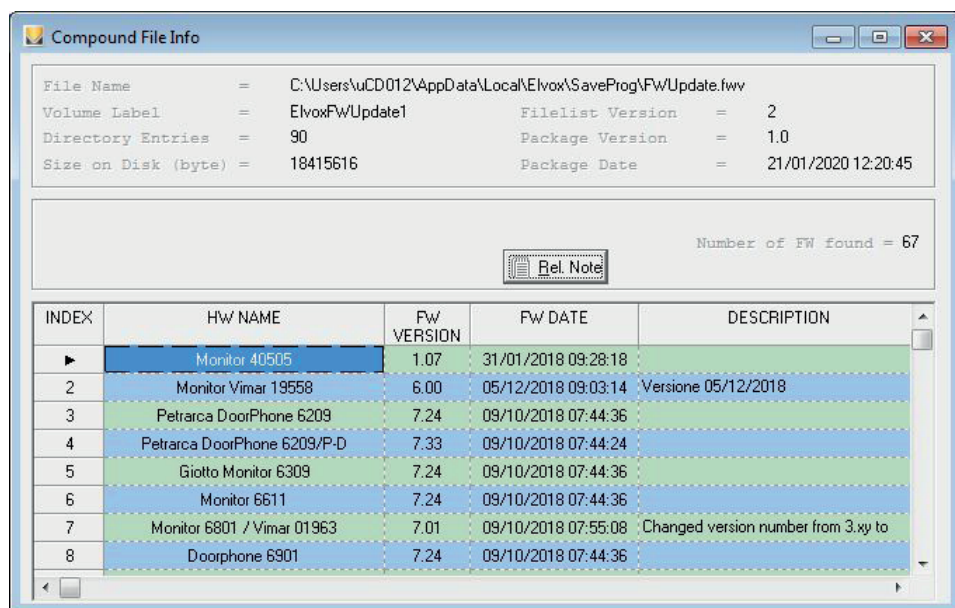
## Using FWUpdate software

- FWUpdate is a SW program for PCs running the Windows operating system (from Windows 7 to Windows 11, 32-bit or 64-bit). It is installed together with SaveProg from version 3.3.3.0 onwards.
- FWUpdate users need to be familiar with basic PC operations, especially the installation of device drivers.
- In order for FWUpdate to work correctly, you also need to install drivers for the interfaces that will be used, and the drivers must be compatible with the version of the operating system you are using. Installing SaveProg fulfils the needs of both SW programs, so no further action is needed. Note that in order to install a device driver, you must be logged in as an Administrator.
- FWUpdate is a simplified version of WinBoot. It is a SW program used by Service Centres to update FW installed in Vimar Due Fili (Plus) devices. FWUpdate is also available to installers, or anyone who wants to use it, but has some limitations:
  - The FW update package is always downloaded together with SaveProg and the latest version overwrites previous versions. FWUpdate does not have a separate update procedure, unlike WinBoot.
  - As mentioned in the previous point, you cannot upload a specific package from FWUpdate.
  - FWUpdate does not allow particularly delicate operations such as updating the bootloader of devices. If necessary, contact the Vimar support service.
- Just like WinBoot, FWUpdate is only available in English. It does not follow the language selected in SaveProg.
- FWUpdate and WinBoot can coexist on the same PC and for the same user.
- SaveProg and FWUpdate can share the same COM port, but only one can use the COM port at any given time.
- After installing SaveProg, start the program by double-clicking the associated  icon on the desktop (if the user has chosen to make it visible during installation) or from the Windows Start menu. The main window is:

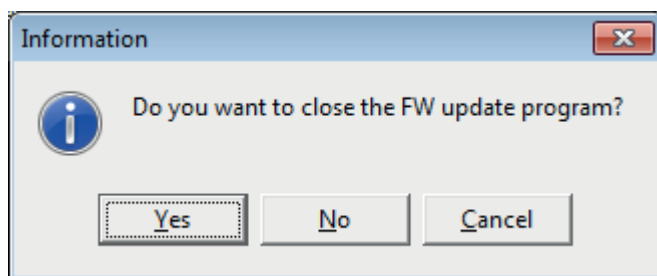


## FWUpdate Software / Due Fili Plus

- A second window contains information about device FWs that can be updated:

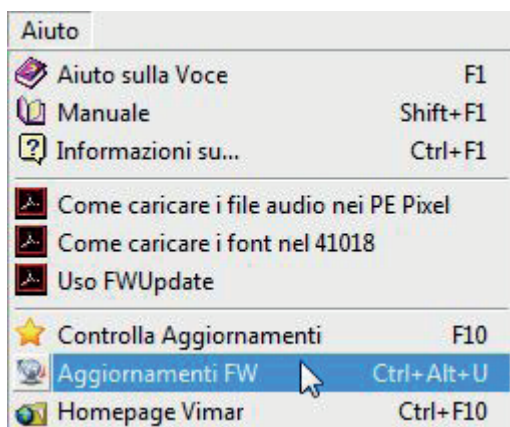


- FWUpdate can also be started from within SaveProg using the  icon located in the button bar.
- If SaveProg and FWUpdate share the same COM port, the SaveProg COM port is automatically disabled () and automatically reactivated on exiting FWUpdate.
- If you close SaveProg before closing FWUpdate, SaveProg asks whether you want to leave FWUpdate open:



## FWUpdate Software / Due Fili Plus

- The *SaveProg Help menu* contains the item *FW Updates*:



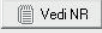


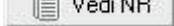

- FW Updates* allows you to check, before running FWUpdate, which updates are available and when they were released. The information is the same as the information visible with FWUpdate:

**2 Aggiornamenti FW**

**Data di rilascio dei FW: 21/01/2020 12:20:45**

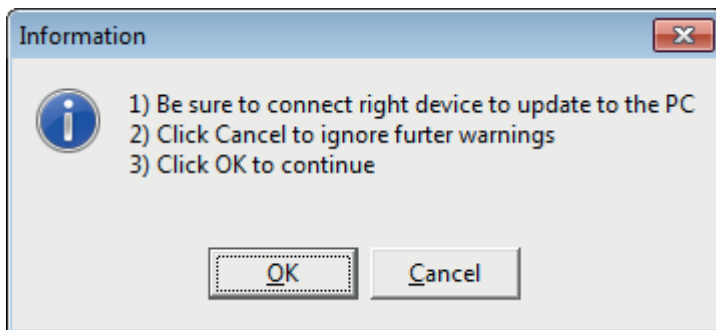
POS.	HW	Versione	Data	Descrizione
1	Monitor 40505	1.07	31/01/2018 09:28:18	
2	Monitor Vimar 19558	6.00	05/12/2018 09:03:14	Versione 05/12/2018
3	Petrarca DoorPhone 6209	7.24	09/10/2018 07:44:36	
4	Petrarca DoorPhone 6209/P-D	7.33	09/10/2018 07:44:24	
5	Giotto Monitor 6309	7.24	09/10/2018 07:44:36	
6	Monitor 6611	7.24	09/10/2018 07:44:36	
7	Monitor 6801 / Vimar 01963	7.01	09/10/2018 07:55:08	Changed version number from 3.xy to 7.zw
8	Doorphone 6901	7.24	09/10/2018 07:44:36	
9	Monitor 7211	7.24	09/10/2018 07:44:36	

- The  button is active when the FW highlighted has associated a release notes document. Click on the button to open a window which displays the release notes. There is a similar button also in the list of FW opened by FWUpdate.
- FWUpdate can also be invoked from here using the  button.

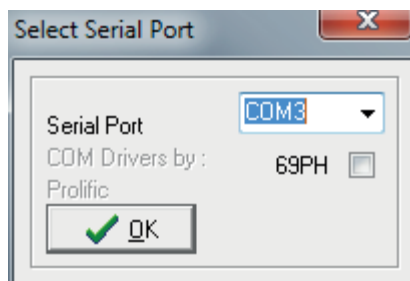
## FWUpdate Software / Due Fili Plus

- If FWUpdate is started from SaveProg, i.e. from the button bar or from *FW Updates* and not from the desktop icon or Start menu, the following message appears:



As indicated in the message, clicking Cancel will run FWUpdate and this window will no longer appear. Clicking OK runs FWUpdate, but this message will reappear next time.

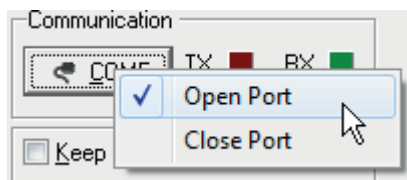
- Click the  button to select the COM port to which the device to be updated is connected, if different from the SaveProg COM port.




If you later change the USB port to which the device is connected, or if the device is not connected to the PC, the programme reports the error. In this case, select another port if possible. Changing the USB port on the PC also changes the COM port number: this is a feature of Windows drivers, not FWUpdate.

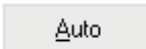
## FWUpdate Software / Due Fili Plus

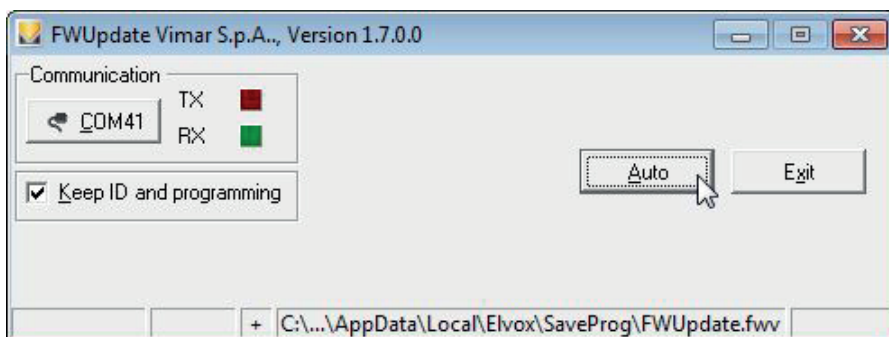
You can disconnect the COM port from FWUpdate by right-clicking on the  button:



When the port is disconnected the button changes as follows: . The state is also remembered when you close and restart FWUpdate, but does not permanently affect the status of the SaveProg COM port, even if it is the same port.

The connection to the device to be updated occurs via:


- o The 4-pole connector of Due File devices (e.g. indoor units) used to update FW + interface Art. 692I/U.
  - o The 6-pin connector on the terminal block of the outdoor unit (the connector to which Art. 950C can be connected).
  - o Arts. 7311, 7539, 7548, 7549, 7558, 7559, 40505 and Pixel or PixelUp series speech units use a USB cable without the need for interfaces.
- The 69PH check box must only be selected if connecting to Art. 69PH.
  - The **"Keep ID and programming"** check box only applies to devices where erasing of the program flash memory also deletes the configuration. These are generally indoor units. Normally speech units, except for some models, never delete the configuration when the program flash memory is deleted. Usually **"Keep ID and programming"** must be selected.
  - Press the  button:



## FWUpdate Software / Due Fili Plus

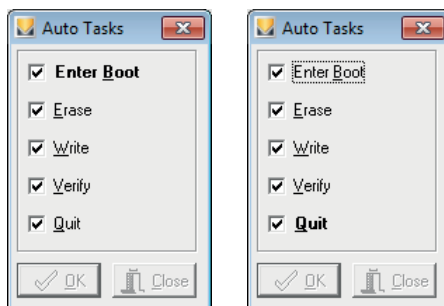
- Another window will appear:



- Ensure that all check boxes are selected. Partial selections are used only in testing. To start updating the FW, click .

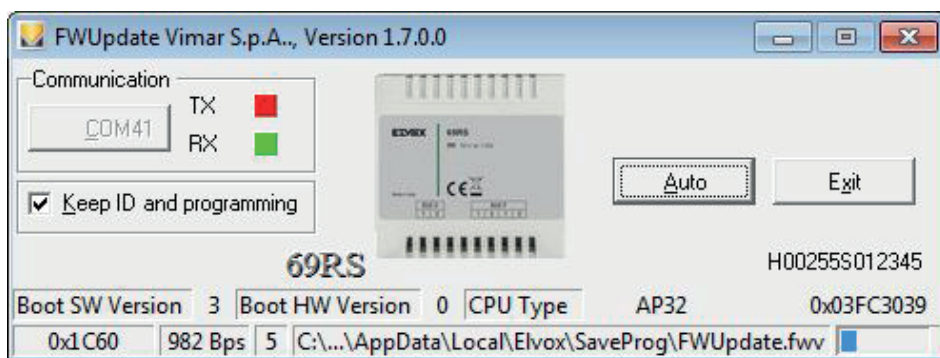
Some products require a special procedure in order to be updated:

- o Arts. 6209, 6309, 8879, 6611, 6901 and 7211: while FWUpdate attempts to activate the bootloader, simply tap the hook of handset indoor units or the talk/listen button of speakerphone indoor units. They must be supplied by the Due Fili bus.
  - o 7549 o 7548 indoor station: must be completely disconnected from the installation. After connecting the USB cable, the user has 30 seconds to enter the bootloader.
  - o 41018 or 41018UP display: must be completely disconnected from the installation, including any additional modules. The user has 30 seconds to enter the bootloader after connecting the USB cable.
  - o There is no special procedure for other indoor units, speech units or accessories.
- The update stages are highlighted in bold:

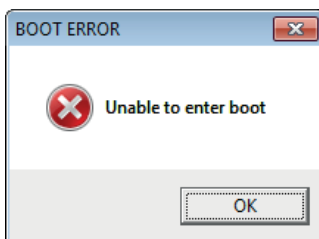


## FWUpdate Software / Due Fili Plus

- The main window shows the progress of the program:



- If FWUpdate fails to launch the procedure in the device, there may be numerous reasons for this, some of which are straightforward:
  - The cable is not connected.
  - The device is not powered when it should be.
  - The device cannot be updated with FWUpdate (e.g. because it doesn't have the bootloader. Some versions of 89F7 do not have the bootloader).
  - The device had already activated the bootloader and FWUpdate was closed without exiting it. In this case, before trying again, switch off the device, or press the reset button if there is one.
  - In older indoor units, the microprocessor does not exit STOP unless you press any key, or the hook if present. For these models, press any key and IMMEDIATELY launch the procedure in FWUpdate.
- The error is indicated by the following message:

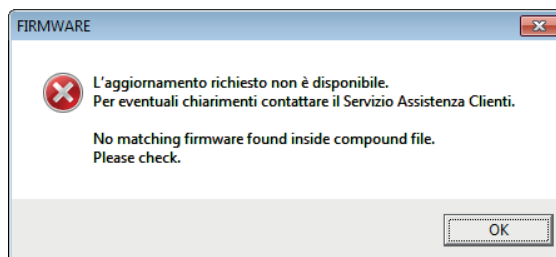


If the above procedure does not work, please contact the Vimar support service.



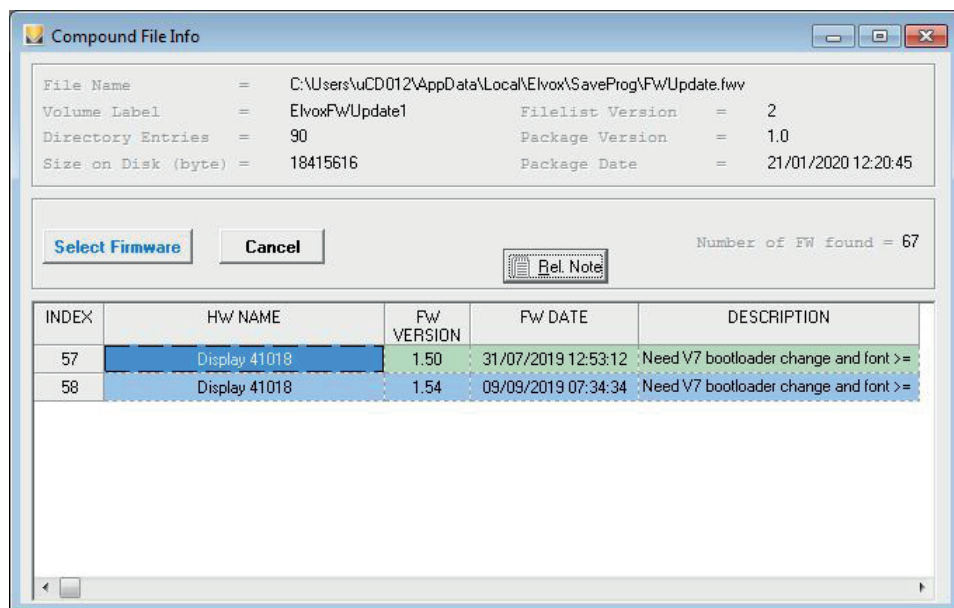
## FWUpdate Software / Due Fili Plus

- FWUpdate automatically searches for the FW compatible with the connected device. If there is only one FW, it uses that. If there are multiple compatible FWs (e.g. two separate versions for the same device model), the user is prompted to select one. If no compatible FW is found, FWUpdate reports the problem with the following message:



- The following figure shows that two FW versions are available for display 41018. Select your chosen one and confirm by clicking on **Select Firmware**.

To cancel, click on **Cancel**.

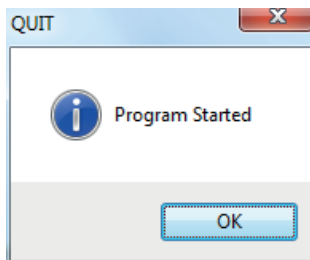



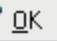
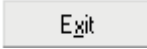
Also in this case, contact Vimar to find out whether the device can be updated another way.

**FWUpdate Software / Due Fili Plus**

---

- At the end, after verifying that the FW has been saved correctly, the following message appears:



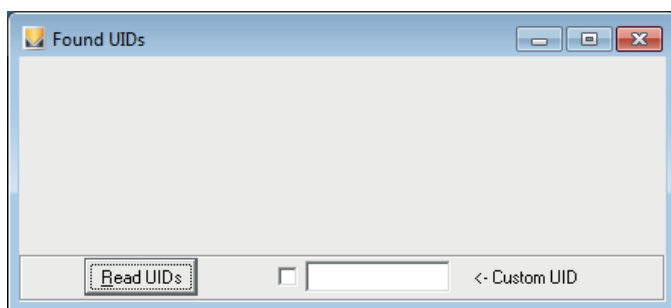
- Any problem that occurs will be appropriately reported.
- Switch to the next object of the same type and press the   button in the Auto Tasks window.
- Press  to exit the program.

## PIXEL, PIXELUP AND RELATED MODULES SPEECH UNIT

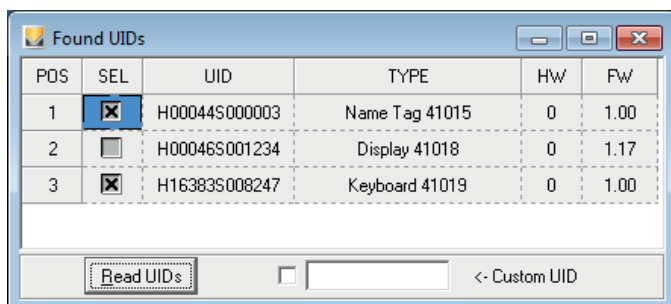
You can connect additional modules to speech units in the Pixel and PixelUp family. Apart from modules 41018, 41018UP, 41016, 41017, 41022, the FWs of other modules do not update directly but instead update via the speech unit. Currently the modules that can be updated in this way are:

1. 10-pushbutton module 41010 and 41011
2. Name-plate module 41015
3. Keypad module 41019

Therefore, when a speech unit in the Pixel and PixelUp family is connected, a new window coupled to the main window will open, showing a list containing the list of modules registered from the speech unit. The 10-pushbutton module Art. 41010 o 41011 must also have been linked to the speech unit following the appropriate procedure. In practice, its LEDs must be lit with a steady light, rather than a flashing light.



You have to fill the list manually by pressing the **Read UIDs** button. If you leave it blank (default) or deselect all entries, the object being updated is the speech unit itself, rather than the connected modules. Below is an example list:



## FWUpdate Software / Due Fili Plus

---

As a result of the above, the RFID and fingerprint modules can never be selected.

The connected speech unit contains a FW  $\geq 1.06$  for which FWUpdate also shows the HW and application FW versions of the individual module. Previous versions do not show it.

The row to the right of the button (Custom UID) is used to update a module that for some reason was not registered in the speech unit. Normally, there is no need to use it unless the update is interrupted while running, causing the application of the module itself to be lost. It is essential to know the UID of the module, which adopts the following format: HxxxxxSyyyyyy.

Select the modules you want to update.

Then follow the normal update procedure. FWUpdate will update all the indicated modules, stopping only if an error occurs. During the process, the module being updated and those already updated will have a grey check box, while those that have not yet been updated will have a black check box. At the end of the process, all of the check boxes will become black again.

## ROXIE OUTDOOR UNIT 40170

The Outdoor Unit 40170 contains two separate CPUs, one containing the bootloader part and the other the application FW.

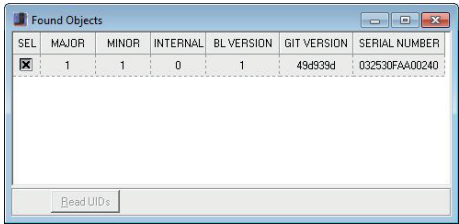
The update rule states that, at the end of the procedure, the versions of all FW must be aligned and consistent with one another. An example is shown in the following table:

Outdoor Unit Bootloader	Outdoor Unit FW	BLE Bootloader	BLE FW
1	1.1	1	1.1.0
1	1.4	2	1.4.0

The Outdoor Unit FW version is always the same as the first two digits of the BLE FW.

The Outdoor Unit and BLE FW is updated keeping in mind the compatibility with the bootloader versions. For instance, you will be unable to update with FW 1.4.0 an object with BLE Bootloader 1 and, vice-versa, update with FW 1.1.0 an object with BLE Bootloader 2.

For FWUpdate to be able to acquire the FW versions within the BLE part which is not physically accessible, the USB-C connector on the Outdoor Unit is used, then click on the Read UIDs button, the same one present in the case of Pixel. The result shown has a different shape:



The information provided is:

- a) BLE FW version 

MAJOR	MINOR	INTERNAL
1	1	0

, read as 1.1.0
- b) BLE bootloader version 

BL VERSION
1
- c) Information about the source code 

GIT VERSION
49d939d

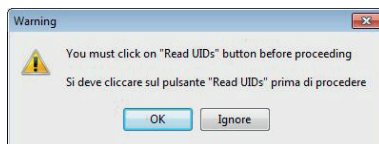
, Vimar internal use
- d) BLE serial number 


SERIAL NUMBER
032530FAA00240

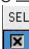

The last two pieces of information do not concern the FW update directly.

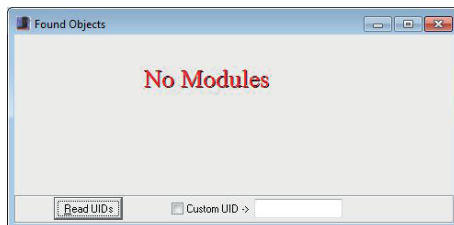
## FWUpdate Software / Due Fili Plus

FWUpdate will not allow you to proceed if you click on **Auto** without first clicking on **Read UIDs**. Indeed, if **Read UIDs** is not pressed, this warning appears:

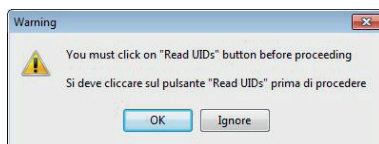


The same warning also appears when, in the same conditions, you press the  button in the "Auto" window.

If you only press **Read UIDs**, you will be able to update the application FW of the Outdoor Unit, whereas if you also check the  box at the top left of the window, the application FW of BLE will also be updated. Every time you click on **Read UIDs** or you connect the USB cable, the  box is automatically unchecked. If the Outdoor Unit does not have any FW in it, the update would be impossible because FWUpdate would not know which FW to select. FWUpdate warns you as follows:



Only in the case specified, to proceed with the update, you will need to press the **Ignore** button shown in the warning:



In this case, all the available FW for the Outdoor Unit is prompted. The user should select the suitable Outdoor Unit FW, which is usually the most recent if there is more than one in the distribution.

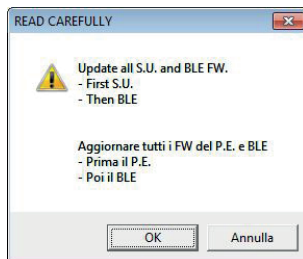
## FWUpdate Software / Due Fili Plus

---

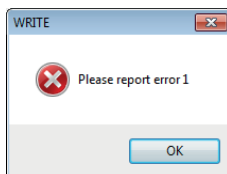
An update order is also set, which is as follows:

- 1) The Outdoor Unit FW should be updated first
- 2) The BLE FW second

Every time you update a FW of the Outdoor Unit or BLE, a warning is shown to complete the sequence and abide by the order. If you realise you have violated the rules, you can click on **Annulla** instead of confirming to continue.




Note: if you take too long to select the desired FW, the BLE may have automatically exiting the updating mode and the following message may appear:



In this case, simply repeat the procedure more quickly. The available time is one minute.

## FWUpdate Software / Due Fili Plus

### Outdoor Unit Update


This occurs with the box unchecked . This is an example of the available FW for the Outdoor Unit:

INDEX	HW NAME	FW VERSION
▶	Push-Button Video Panel 40170	1.1

Only the compatible FW is prompted, in this case with BLE bootloader version 1. Updates to versions that require the bootloader to be changed are not possible, whether for the Outdoor Unit or the BLE. Should an update requiring a bootloader change be necessary, please contact Vimar Customer Services or an authorised Technical Support Centre.

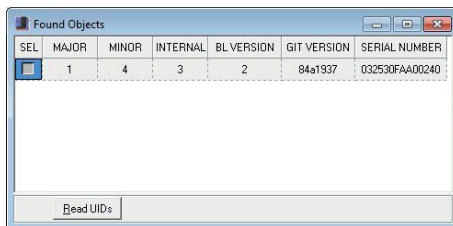
After updating the Outdoor Unit FW, click on  again. Move on to the BLE update.


### BLE updates

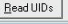
This occurs with the box checked . This is an example of the FW available for the BLE and compatible with its bootloader, in this case version 2:

INDEX	HW NAME	FW VERSION
▶	Radio of Video Panel 40170	1.4.3

After updating the BLE FW, click on  again. All FW is aligned:



SEL	MAJOR	MINOR	INTERNAL	BL VERSION	GIT VERSION	SERIAL NUMBER
	1	4	3	2	84a1937	032530FAA00240









FWUpdate\_MU\_EN 02 2402



**VIMAR**

Viale Vicenza 14  
36063 Marostica VI - Italy  
[www.vimar.com](http://www.vimar.com)