

System migration procedure from By-me to By-me Plus

System migration procedure from By-me to By-me Plus

The document herein illustrates the operations to carry out so that a By-me system configured using a 3-module control unit (art. 21509) or using EasyTool Professional can be converted into By-me Plus and thus benefit from the new functions introduced, such as:

- the installer, using the simplified configuration App (View Pro), obtains a greater speed of enrolment of the By-me Plus devices and can perform functional integrations with other sub-systems;
- the end user, using vocal control (Google Assistant and Alexa) and a single, extremely user-friendly supervision app (View), manages all the sub-systems installed.

To perform this migration, you must comply with the requisites listed in para. 1 (PREPARING THE SYSTEM) and certain devices that are no longer compatible may need to be replaced.

CAUTION: Touch screens art. 20511-20511.1-21511-21511.1-19511-14511-14511.1, 20512-19512-16952-14512, 21512-21512.1, 21553-21553.1, 21554 and the home automation system module art. 01965 cannot be migrated.

Multimedia video touch screen art. 21553.2

After being completely reprocessed by VIMAR, this device may be used in the By-me Plus system with similar functions to those of art. 01425 (all data relating to the old system will therefore be deleted). Contact the Vimar sales network for all the details.

The reprocessed device will operate on the migrated system via the View App, by interacting with the home automation system gateway art. 01410-01411 and the Due Fili Plus video door entry gateway art. 01415. If the LINE OUT audio outputs are used in the system to be migrated, they will instead not have any function in the migrated system.

Migration of the By-me system envisages the following four phases:

1. Preparing the system using EasyTool Professional.
2. Exporting, using EasyTool Professional, the database of the system to migrate.
3. Importing, using the View Pro App, the system database into the home automation system gateway.
4. Migration completion and device realignment using the View Pro App.

Requisites of the system to migrate.

- EasyTool Professional Software ver. 2.14 e later.

1. PREPARING THE SYSTEM.

Correct preparation of the By-me system is always bound to the following:

- **The bus burglar alarm system (SAI BUS) is not managed.** It is therefore necessary to separate the SAI line (0.0) physically from the automation lines and, using EasyTool Professional, to create 2 separate systems (one for the home automation system gateway associated with only the automation devices and one for the control unit 21509 associated with only the burglar alarm system devices) by migrating only the one relating to the gateway.

The following restrictions will however apply:

- functional integrations between devices will not be possible (for instance a presence detector that turns on the light);
- supervision of the SAI-BUS branch will not be available in the View App.

- **Systems with multiple control units will not be managed.** The bus lines associated with the various control units will therefore need to be separated physically and, using EasyTool Professional, various systems need to be created, each with a single control unit. Each system will then be migrated individually onto the respective home automation system gateway (each system will therefore have a dedicated home automation system gateway) and it can be supervised from the View App independently. Any integrated functions between systems that were previously implemented cannot however be managed.

- **Systems created with control units art. 01960 are not managed directly.** For migration to be possible, the database needs to be exported from control unit 01960 to control unit 21509 according to the compatibilities specified in the SC - **Data sheet** document which can be downloaded from the product data sheet on the www.vimar.com website.

Once the above points have been complied with, using EasyTool Professional in the On-Line mode, perform the following:

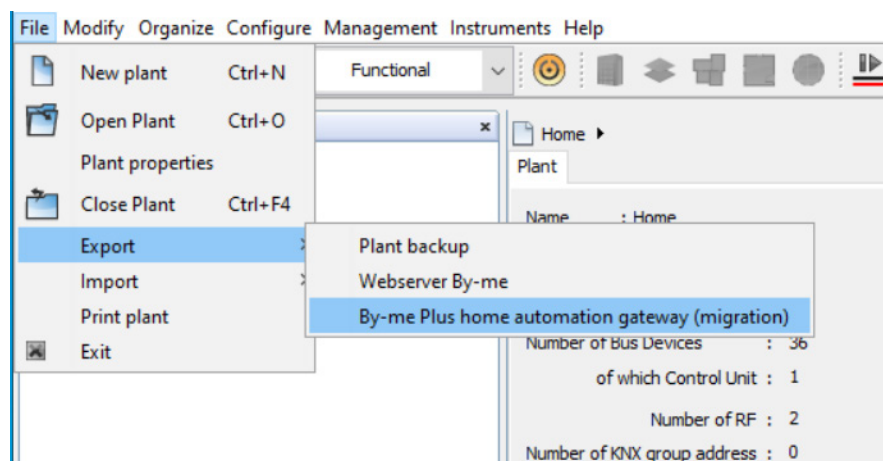
- Eliminate unsupported devices and, if necessary, replace them with new devices (see the list provided in the Appendix).
- Eliminate the scenarios.
- Eliminate any group depths (such as Master Groups).
- Where present, check and arrange the programmes on the logic unit art. 01468. If the logic unit manages automation only, we recommend you re-configure the logic programmes in the home automation system gateway and disconnect it from the bus; vice-versa, if you decide to use it, the timers cannot be modified nor can the logic programmes to started/stopped using the View App or the touch screens.
- Eliminate the By-me Web Server (except if you want to remote-manage the SAI BUS line using the By-web App; in this case, you need to separate the LINE 0 AREA 0 from the automation lines and disconnect the line coupler).
- Remove all possible KNX integrations such as Mitsubishi air conditioners.
- Remove all EnOcean devices.

N.B. Touch screens art. 01420, 01422 and 01425 cannot be used to manage the SAI-BUS system using the Web Server.

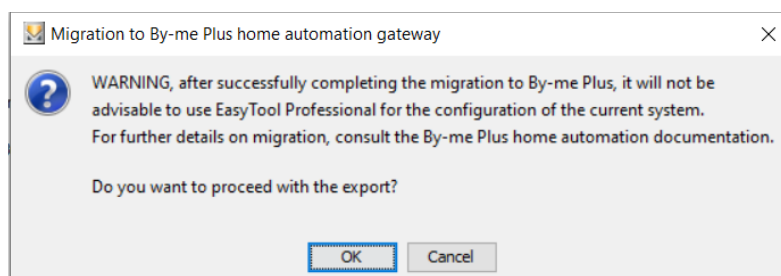
2. EXPORTING THE SYSTEM DATABASE.

On EasyTool Professional, from the "File ➔ Export" menu, select "By-me Plus home automation system gateways (migration)" and confirm using "OK".

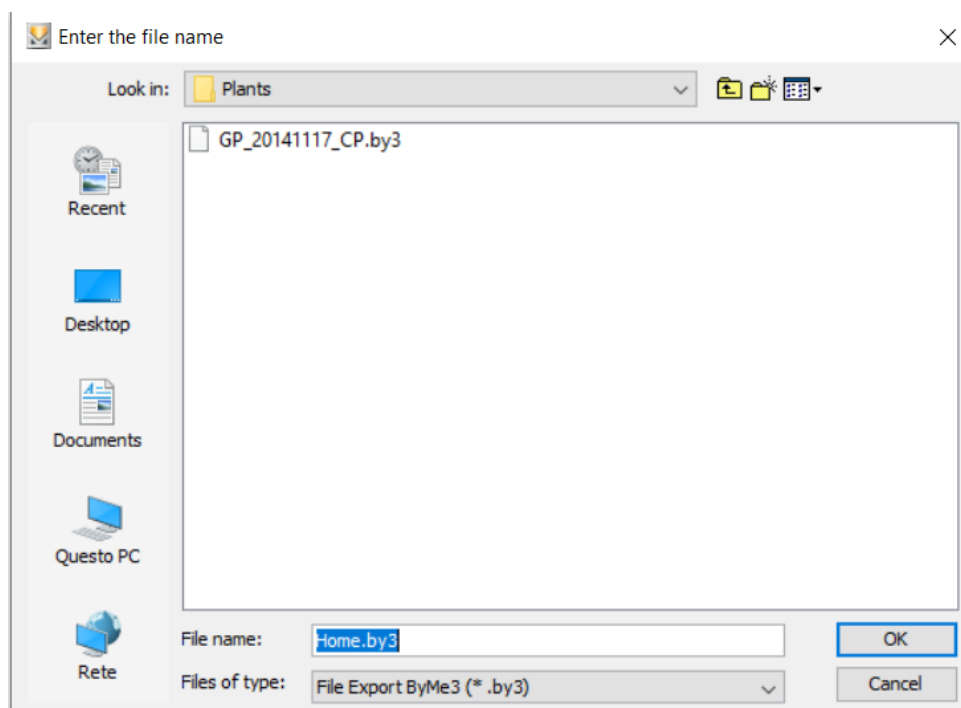
System migration procedure from By-me to By-me Plus



Once you have selected the export option, the software will inform you that, when you have successfully completed the migration procedure, you will no longer be able to use Easy Tool Professional to modify the system configuration, but the View Pro App will be necessary.

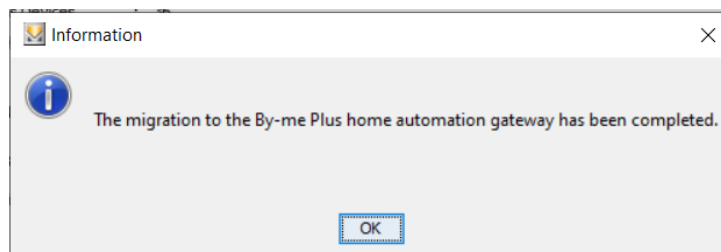
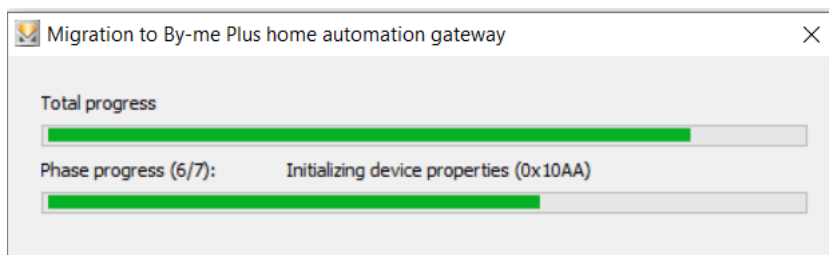


After confirmation, specify the path on which to save the migration file; EasyTool Professional will create a file with the extension .by3.

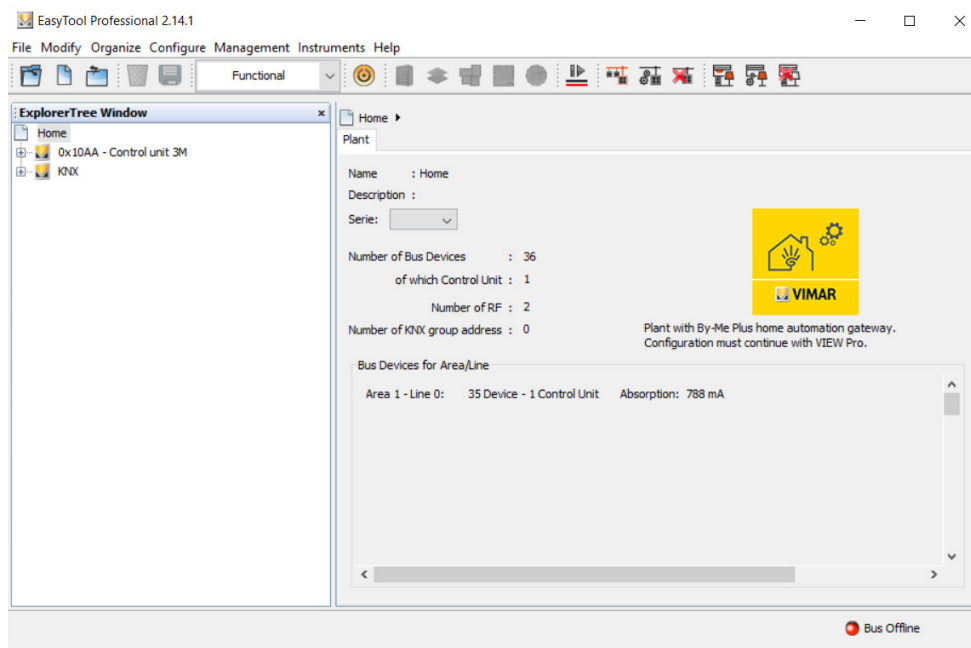


The export procedure could take several minutes; the software will display the progress and subsequently confirm completion.

System migration procedure from By-me to By-me Plus

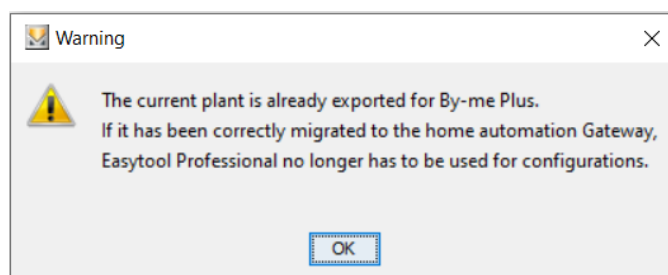


The systems which have been exported are identifiable in the screen of the "System" node; in fact, the icon of View Pro is displayed, accompanied by the message that subsequent configurations must only be made using the App.



If the procedure is unsuccessful, check that all the requisites stated in the "PREPARING THE SYSTEM" paragraph have been met, perform any corrections required and repeat the migration operations.

N.B. Following migration of the By-me system, you can no longer use Easytool Professional for system configuration; to remedy this, every time you try to open a system that has already been exported, the following message will be displayed:



System migration procedure from By-me to By-me Plus

3. IMPORTING THE SYSTEM DATABASE.

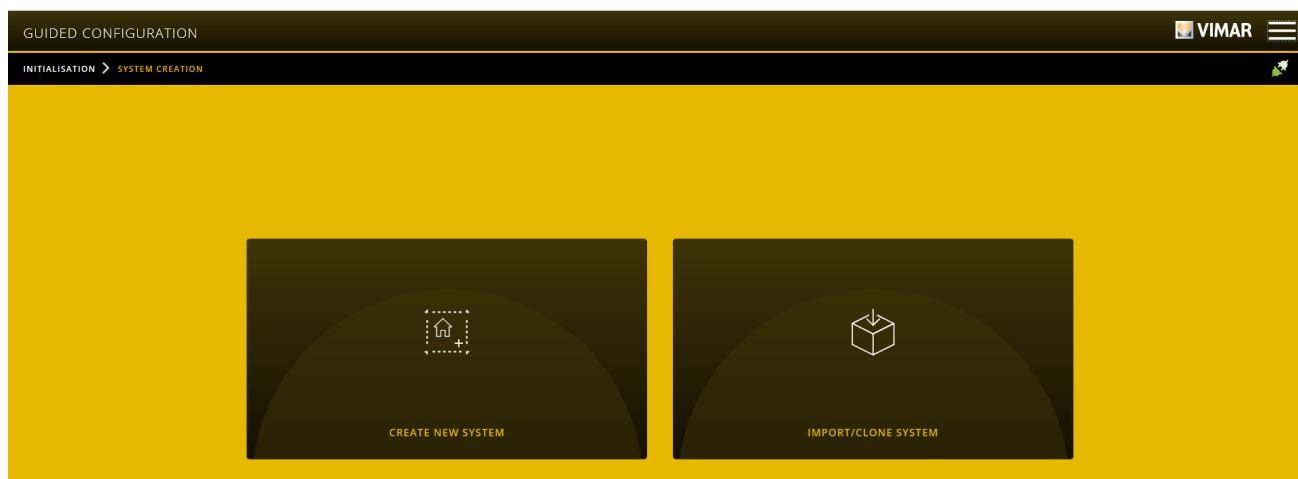
The next step is to import the .by3 file (created using EasyTool Professional) into the home automation system gateway using the View Pro App.

Caution: The database of a system configured using the Easy Tool Professional software can only be imported if the home automation system gateway has not been configured yet.

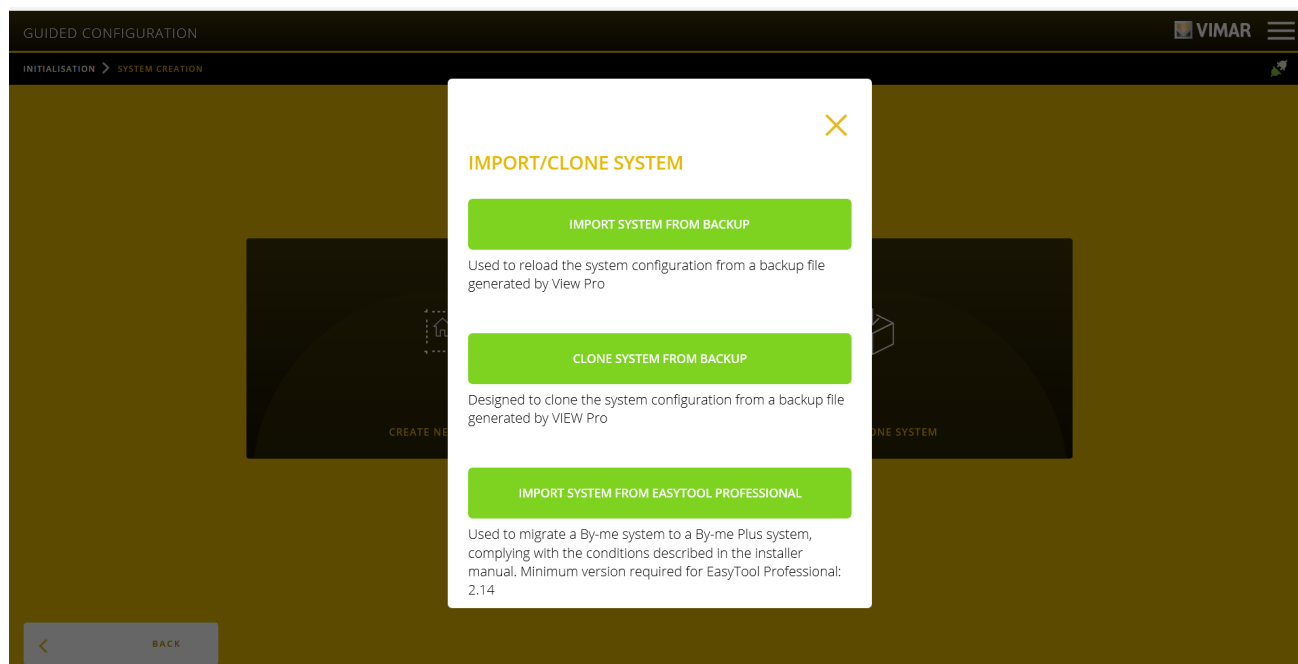
By-me Plus system requisites.

- Home automation system gateway art. 01410-01411 ver. 1.2.x and later.
- View Pro App ver. 1.1.x and later.

When you access the gateway for the first time (only and solely the first access) the "Welcome" screen is displayed; select "START".



Select "IMPORT SYSTEM".

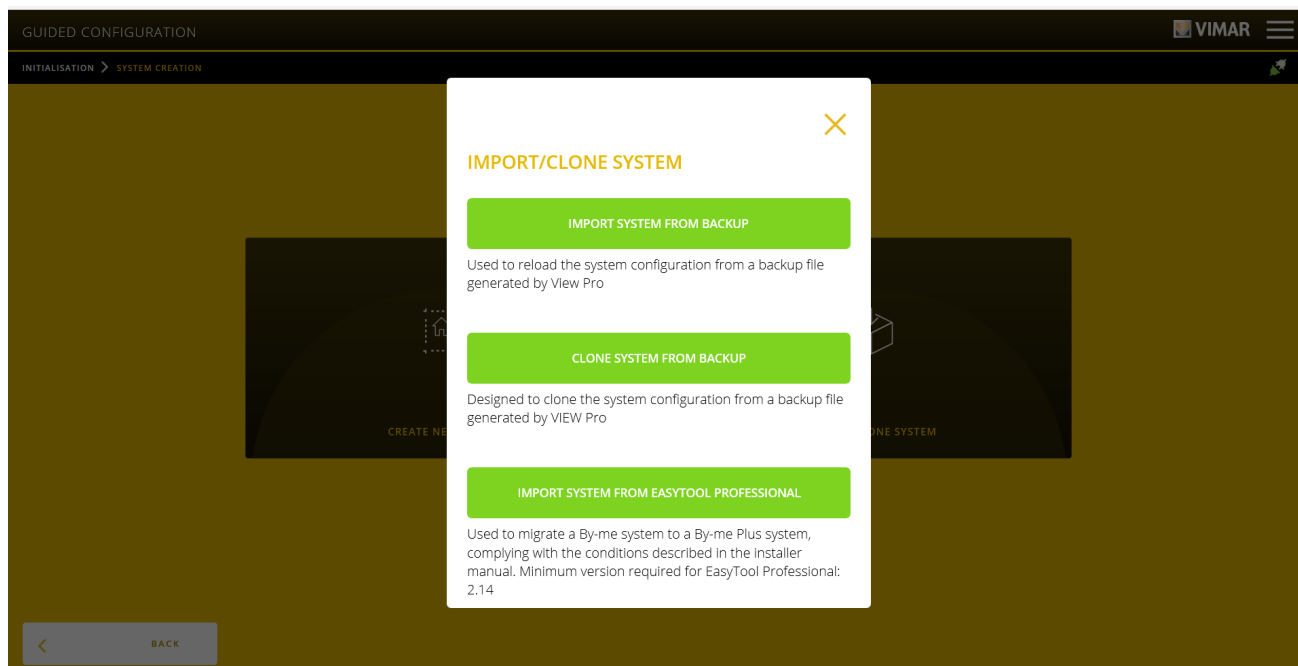


Two import options are displayed:

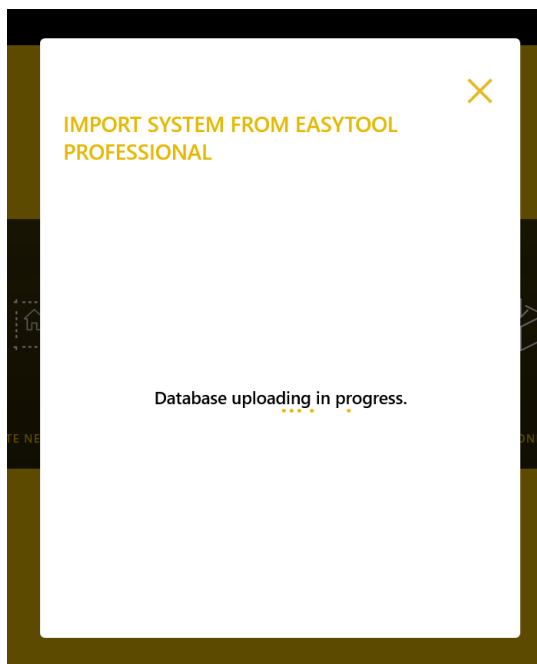
- IMPORT SYSTEM FROM BACKUP which allows you to restore a backup you previously made using the View Pro App.
- IMPORT SYSTEM FROM EASYTOOL PROFESSIONAL which allows you to migrate the database of the system you exported using Easy Tool Professional into the By-me Plus system.

Then select "IMPORT SYSTEM FROM EASYTOOL PROFESSIONAL".

System migration procedure from By-me to By-me Plus



Use "LOAD" to select the database exported from Easytool Professional you wish to import into the home automation system gateway; confirm with "CONFIRM".



Depending on the size of the system, it may take several minutes to complete import; at the end of the procedure, the View Pro App will display some information concerning the import completed.

When importing was successful, a report will be displayed, containing the following information:

- Completion of migration with importing of the name of the file used.
- Number of devices migrated.
- Number of environments created (the migration procedure creates the environments automatically based on the 'room' and 'zone' fields that can be associated with each group in Easy Tool Professional).
- Number of applications created.
- Where necessary, an indication to perform the device realignment procedure.

System migration procedure from By-me to By-me Plus

GUIDED CONFIGURATION
VIMAR

INITIALISATION > SYSTEM CREATION

IMPORT PERFORMED SUCCESSFULLY
Below are the messages relating to the import outcome
EXPORT LOG

| OUTCOME | MESSAGE | DETAILS |
|-----------|--|-----------|
| OK | Migration completed starting from the file indicated in the details column | House.by3 |
| OK | Number of environments created | 10 |
| OK | Number of applications created | 30 |
| OK | Number of devices correctly imported | 34 |
| Important | The imported configuration could differ from that saved in the devices. Realign the system | |

CONFIRM

Using "EXPORT LOG" the report can be exported to a dedicated txt file and suitably filed.

Use "CONFIRM" to return to the main screen of the View Pro App.

Vice-versa, if the import was unsuccessful, the App will display the list of reasons for the negative outcome of the procedure.

GUIDED CONFIGURATION
VIMAR

INITIALISATION > SYSTEM CREATION

IMPORT FAILED
Below are the actions to carry out on EasyTool Professional before migrating again
EXPORT LOG

| OUTCOME | MESSAGE | DETAILS |
|---------|---|------------------------|
| Error | Functional units detected configured in invalid unit depth, remove and migrate again. List of device physical addresses and functional unit index in the "details" column | (0x1021 - FB 2) |
| Error | Presence of radio devices not supported by By-me Plus, remove and migrate again. List of device serials in the "details" column | 0x0025af96, 0x001a9ed2 |
| Error | Presence of obsolete By-me devices not supported by By-me Plus, remove and migrate again. List of device physical addresses in the "details" column | 0x100e, 0x1002, 0x1013 |

< BACK

The following paragraph (3.1) describes the corrective measures to carry out to solve the errors and thus obtain correct importing.

System migration procedure from By-me to By-me Plus

3.1 Error types on the migration procedure and how to solve them

The following table sums up certain conditions that are not supported by the By-me Plus system which cause the failure of the importing procedure and, for each one, the operations to carry out to solve the incompatibility condition in the subsequent import.

| ERROR MESSAGE | CORRECTIVE MEASURE |
|--|--|
| Incompatible file version imported. | The imported file was not exported with the correct version of EasyTool Professional. Update the software version and try again. |
| File not exported correctly by EasyTool Professional. | |
| File empty or with invalid extension. | |
| Importing of systems in multi control unit configuration not supported. | Physically separate the bus lines associated with the various control units and, using EasyTool Professional, create various systems, each with a single control unit. Then migrate each system individually to the respective home automation system gateway (each system will therefore have a dedicated home automation system gateway). |
| Presence of a number of devices above the limit supported by the home automation system gateway. | Remove the excess devices from the EasyTool Professional configuration, export the system database again and perform import. N.B. Check the gateway you purchased first (art. 01410 manages max 32 devices). |
| Presence of obsolete SAI BUS burglar alarm system devices. | Remove the SAI BUS burglar alarm system devices from the EasyTool Professional configuration, export the system database again and perform import. The "DETAILS" column of the report screen displays the physical addresses of the devices to eliminate. |
| Presence of obsolete By-me devices not supported by the By-me Plus system. | |
| Presence of radio devices not supported by the By-me Plus system. | |
| Presence of scenarios not supported by the By-me Plus system. | Remove the scenarios from the EasyTool Professional configuration, export the system database again and perform import. |
| Detected unsupported functional units configured in group depth. | There are functional units configured in more than one group (group depth). Each functional unit must be configured exactly in a single group. Remove these functional units from the EasyTool Professional configuration so that they are configured in a single group, export the system database again and perform import. The "DETAILS" column in the report screen displays the functional units configured in more than one group. |
| Detected non-importable elements. | There are configurations present that are not permitted by the By-me Plus system. Remove these elements from the EasyTool Professional configuration, export the system database again and perform import. The "DETAILS" column of the report screen displays the elements to eliminate. |
| Presence of IR motion detectors with configuration not compatible with the By-me Plus system. | |
| No line couplers detected on line 0. Cannot determine where to move the coupler from Area 0 - Line 0. | |
| Invalid remote energy production units detected. | |
| Functional units of the By-me device incorrectly configured in unsupported groups. | |
| HVAC Controllers requiring humidity information detected in units without this information. | |
| Lines with By-me devices configured in several areas. | Remove the couplers to achieve a single area, export the system database again and perform import. The "DETAILS" column of the report screen displays the physical addresses of the couplers to eliminate. |
| Presence of KNX devices not supported by the By-me Plus system. | Remove these devices, export the system database again and perform import. The "DETAILS" column of the report screen displays the names associated with the virtual datapoints to eliminate. |

System migration procedure from By-me to By-me Plus


4. MIGRATION COMPLETION AND DEVICE REALIGNMENT.

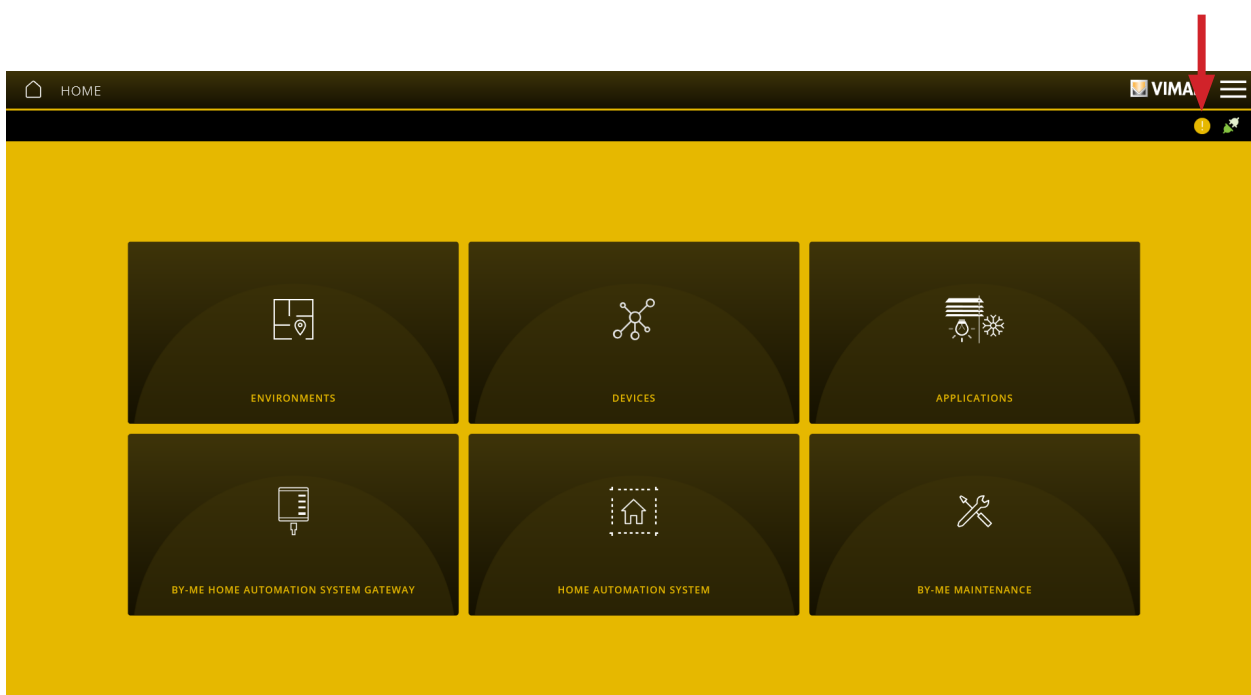
Once the migration procedure onto the By-me Plus system is complete, all the By-me devices exported will be present in the View Pro App and displayed in the "By-me Device Management" screen.

Each device will be placed in the main environment and identified with the name of the system itself.

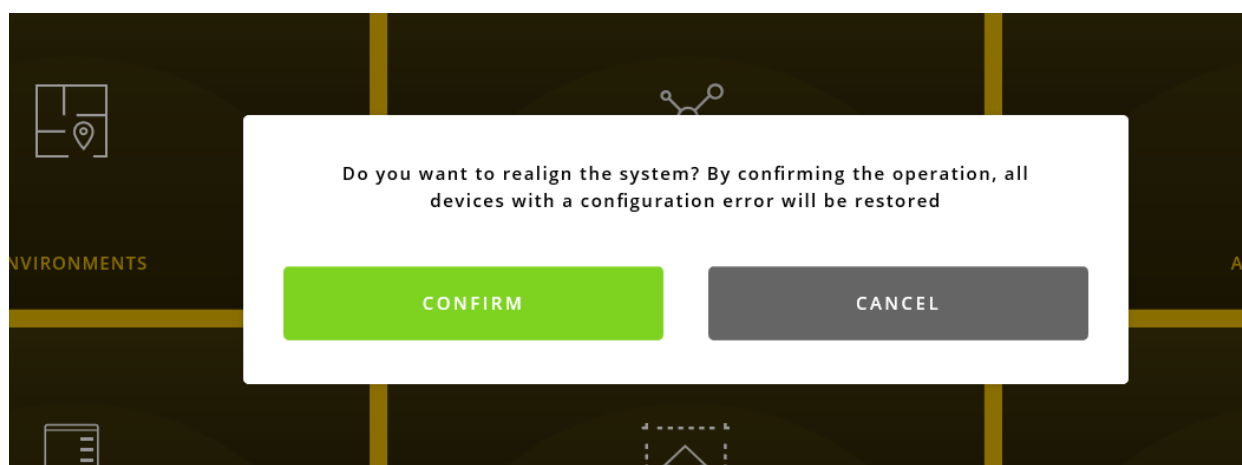
At the end of the migration procedure, all the groups will be converted into the corresponding applications, which can be seen in the View Pro and View Apps, as follows:

- The type of application (LIGHTS, CURTAINS AND ROLLER SHUTTERS, CLIMATE CONTROL, etc.) will automatically be deduced by the procedure.
- The application will be placed in an environment identified by the "Room-Area" pair which had been assigned to the group using EasyTool Professional.
- For each different pair, an environment derived from the main environment of the system will be created (so no hierarchical bond will be defined between the environments created).
- The installer can subsequently reorganise and/or rename the migrated environments and functions as (s)he sees fit, as required by the end customer.

At the end of the migration procedure, the need to perform device realignment will be indicated by the presence of the  icon on the main screen of the View Pro App.



The device realignment procedure is an operation internal to the system; to launch it, click on the  icon.

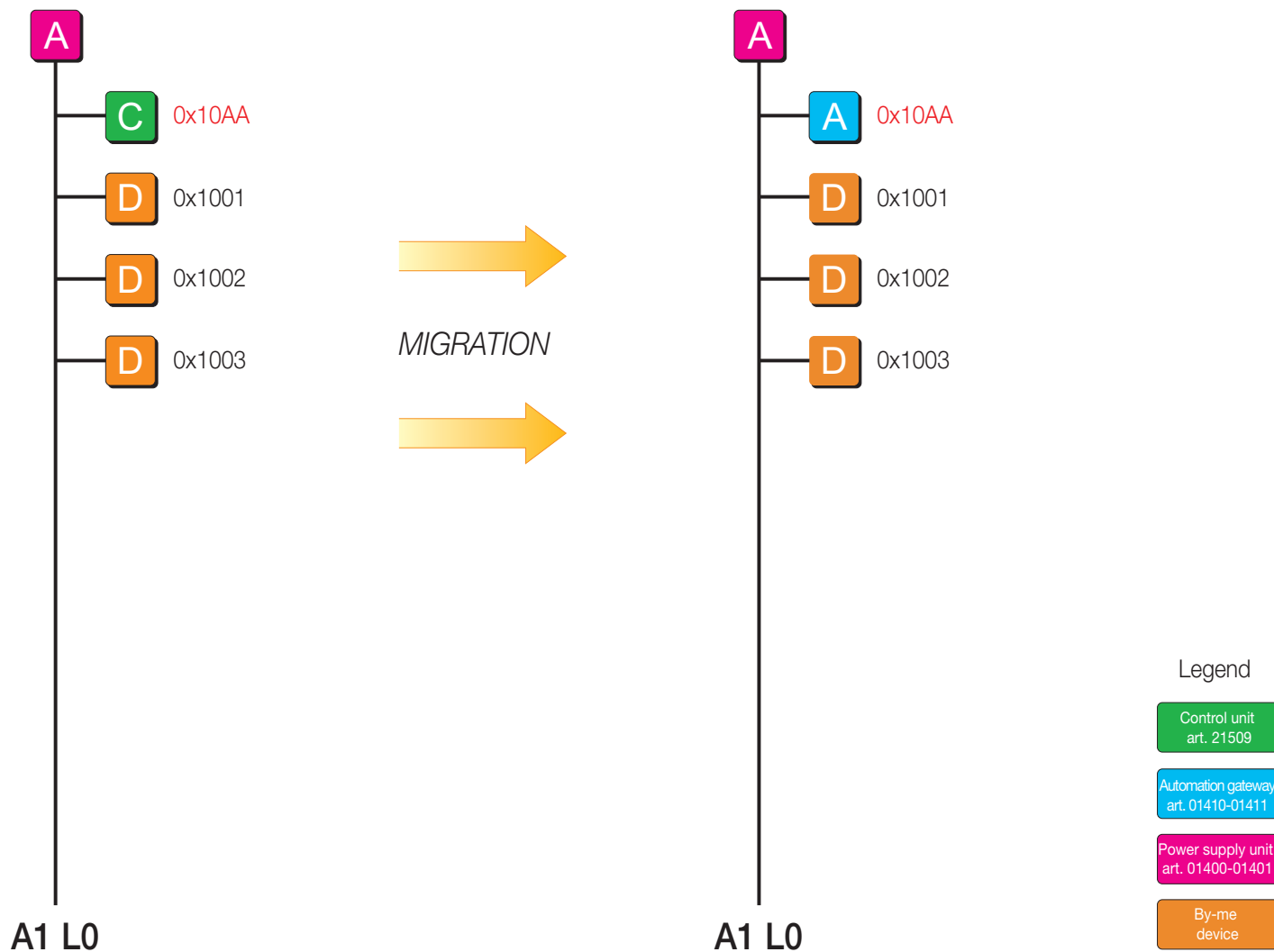


Then select "CONFIRM".

System migration procedure from By-me to By-me Plus

5. INSTALLATION EXAMPLES.

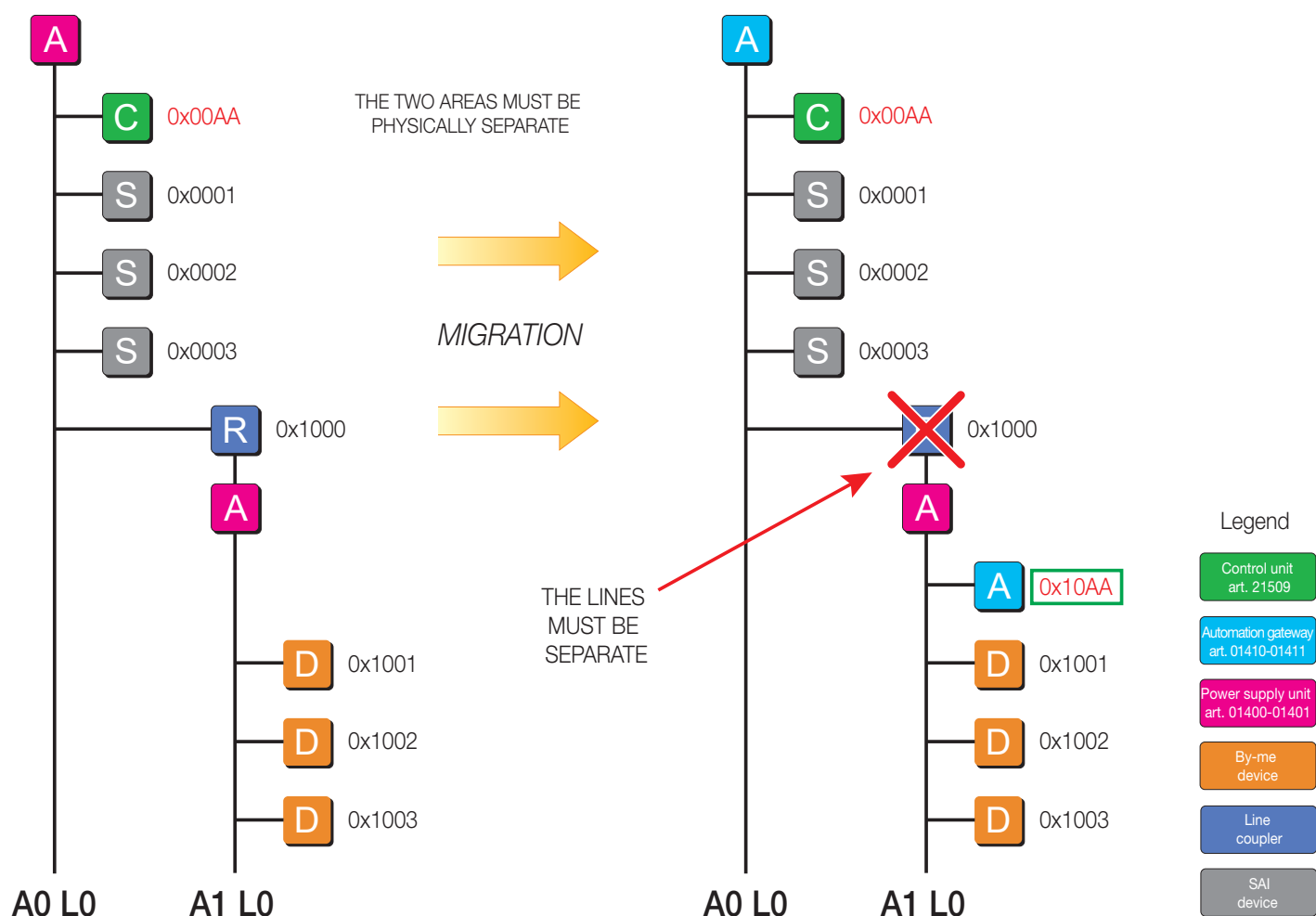
CASE 1: System with single control unit configured on A1, L0.



- Operations to perform in EasyTool Professional: export the system using the "Export ➔ By-me Plus home automation system gateways (migration)" option.
- Web Server management: where present in the system, the Web Server should be removed.

System migration procedure from By-me to By-me Plus

CASE 2: System with single control unit configured on A1, L0 and SAI burglar alarm system.



• **Operations to carry out in EasyTool Professional:**

- make a copy of the system database;
- in OFF-LINE mode, eliminate all the burglar alarm system devices from the clone;
- then export the system from the copy of the database using the "Export ➔ By-me Plus home automation system gateways (migration)" option.

• **Web Server Management:** where present in the system, the Web Server can only be used for the supervision of the burglar alarm system.

If this is the case, you need to copy the original database with EasyTool Professional and, in OFF-LINE mode, eliminate all the devices relating to the automation, generate the new XML file and then import it again into the Web Server.

System migration procedure from By-me to By-me Plus

APPENDIX - Devices compatible with By-me Plus (the list also includes articles that are no longer present in the price list)

| ART. | DESCRIPTION |
|---------------------------------|--|
| 01417 | Home automation actuator+RGBW 4 OUT dimmer |
| 01418 | Home automation system dimmer 2 OUT 100W LED 120V/230V |
| 01420 | Home automation system IP4.3" PoE 8M touch screen |
| 01422 | Home automation system IP 7" PoE touch screen |
| 01425 | Home automation system IP 10in PoE touch screen |
| 01450 | Energy meter with 3 inputs for toroidal current sensor |
| 01451 | Energy meter with built-in current sensor |
| 01455 | Load control module, 3 inputs for toroidal current sensor |
| 01456 | Actuator with relay output 16 A 120-230 V~ 50/60 Hz with built-in current sensor |
| 01465 | HVAC controller for heating systems |
| 01466 01466.1 | Actuator with 4 proportional analogue outputs |
| 01467 | Device with 3 analogue signal inputs |
| 01468 | Logic unit for By-me home automation system |
| 01470 01470.1 | Multifunction home automation system module - 9in 8out relay |
| 01471 | Multifunction home automation system actuator - 4out relay |
| 01475 | Home automation system module 3in 3out LED |
| 01476 | Home automation system module 2in 3out (1 roller shutter+2 LEDs) |
| 01477 | Home automation system module 2in 3out (1 relay +2 LEDs) |
| 01480 | Home automation system control with 4 push buttons |
| 01481 | Home automation system control with 4 push buttons + actuator |
| 01482 | Home automation system control with 4 push buttons+roller shutter and slats |
| 01483 | Home automation system control with 4 push buttons +1 LINEOUT |
| 01484 | Home automation system control with 4 push buttons ampl.1+1W |
| 01485 | Home automation system control with 6 push buttons |
| 01486 | Home automation system control with 6 push buttons + 3M actuator |
| 01487 | Home automation system control with 6 push buttons + roller shutter and slats |
| 01488 | Home automation system control with 4 push buttons + LED 230V 2M 100W LED dimmer |
| 01489 | Home automation system control with 4 push buttons + 0/1-10V 2M dimmer |
| 01845.1 | Line coupler |
| 01850.1 | Actuator with 1 relay output for DIN rail (60715 TH35) |
| 01850.2 | Actuator with 1 relay output for DIN rail (60715 TH35) |
| 01851.1 | Actuator with 4 relay outputs for DIN rail (60715 TH35) |
| 01851.2 | Actuator with 4 relay outputs for DIN rail (60715 TH35) |
| 01852.1 | Actuator with 2 roller shutter and slats for DIN rail (60715 TH35) |
| 01852.2 | Actuator with 2 roller shutter and slats for DIN rail (60715 TH35) |
| 01856 | Actuator for ballast control for DIN rail (60715 TH35) |
| 01870 01870.120 01985.120 | By-me Master 4M dimmer for incandescent-CFL-LED lamps and electronic transformers (Italy + BS) |

| ART. | DESCRIPTION |
|--|--|
| 01877 01877.120 | By-me electronic transformer for LED RGB 12 – 24Vdc |
| 01900 | FM tuner transmitter module for DIN rail (60715 TH35) |
| 01901 | Audio output receiver module for DIN rail (60715 TH35) |
| 01971 | Actuator with 4 MARINE relay outputs for DIN rail (60715 TH35) |
| 01973 | MARINE 12-24V dimmer for DIN rail (60715 TH35) |
| 01974 | Multifunction home automation system actuator 4out MARINE |
| 01975 | Actuator 1-10Vd.c. MARINE 120-230V LED for DIN rail (60715 TH35) |
| 01976 | Actuator 1-10Vd.c. MARINE 12-24V LED for DIN rail (60715 TH35) |
| 01978 | One-position stable relay PWM for DIN rail (60715 TH35) |
| 02951 | Touch screen electronic thermostat |
| 20485 19485 16935 14485 | Passive infrared presence detector |
| 20486 19486 | Adjustable passive infrared presence detector |
| 20515 19515 16955 14515 | Interface for traditional 230 V~ or 12-24 VAC/DC controls |
| 20518 19518 16958 14518 | Interface for 2 traditional controls |
| 20520 19520 16960 14520 | Control device with two simple push buttons |
| 20521 19521 16961 14521 | Control device with two rocker buttons |
| 20525 19525 16965 14525 | Control device with two simple push buttons and actuator with change-over relay output 8 A 120- 230 V~ |
| 20526 19526 16966 14526 | Control device with two rocker buttons and actuator with change-over relay output 8 A 120- 230 V~ |
| 20527 19527 16967 14527 | Control device with two rocker buttons and actuator for 1 roller shutter with relay output 4 A 120- 230 V~ |
| 20527.1 19527.1 16967.1 14527.1 | Control device with two rocker buttons and actuator for 1 roller shutter with relay output 4 A 120- 230 V~ |
| 20528 19528 16968 14528 | Control device with two rocker buttons and actuator for SLAVE dimmers 230 V~ 01854 and 20536 |

System migration procedure from By-me to By-me Plus

| ART. | DESCRIPTION |
|--|--|
| 20529 19529 16969 14529 20529.120 19529.120 16969.120 14529.120 | Two rocker buttons with SLAVE dimmer actuator for incandescent-CFL-LED-lamps-Electronic transformers |
| 20534 19534 16974 14534 | Actuator with change-over relay output 6 A 120- 230 V~ |
| 20535 19535 16975 14535 | Actuator with change-over relay output 16 A 120- 230 V~ |
| 20537 19537 14537 | Actuator with relay output 16 A 230 V~ 50 Hz with built-in current sensor |
| 20538 19538 14538 | Temperature probe for By-me home automation system |
| 20540 19540 16980 14540 | Control device with three simple push buttons |
| 20541 19541 16981 14541 | Control device with three rocker buttons |
| 20545 19545 16985 14545 | Control device with two simple push buttons and actuator with change-over relay output 8 A 120- 230 V~ |
| 20546 19546 16986 14546 | Control device with three rocker buttons and actuator with change-over relay output 8 A 120- 230 V~ |
| 20547 19547 16987 14547 | Control device with three rocker buttons and actuator for 1 roller shutter with relay output 8 A 120- 230 V~ |
| 20548 19548 16988 14548 | Control device with three rocker buttons and actuator for MASTER dimmer 230 V~ 50 Hz |
| 20549 19549 16989 14549 | 3 rocker buttons with MASTER dimmer for incandescent-CFL-LED-lamps-Electronic transformers |
| 20581 19581 14581 | Audio output receiver module with 2 modules 1+1W |
| 20582 19582 14582 | RCA audio input transmitter module |
| 20584 19584 14584 | IR control module |
| 20584.1 19584.1 14584.1 | Interface for transmission of By-me controls to IR receiver |
| 20586 19586 14586 | Call microphone module |

| ART. | DESCRIPTION |
|-------------------------|--|
| 20589 19589 14589 | By-me Bluetooth receiver |
| 21520 21520.1 | Control with 4 programmable TACTIL push buttons |
| 21540 21540.1 | Control with 6 programmable TACTIL push buttons |
| 21553.2 | Multimedia video touch screen 10in IP After being completely reprocessed by VIMAR, this device may be used in the By-me Plus system with similar functions to those of art. 01425. Contact the Vimar sales network for all the details. The reprocessed device will operate on the migrated system via the View App, by interacting with gateways art. 01410-01411 and art. 01415. |