

Vimar:

head offices
and plant in
Italy.

Present in
all the major
world markets.
Our mission:
positive energy
wherever we
go.



Viale Vicenza 14
36063 Marostica VI - Italy
Tel +39 0424 488 600
Fax +39 0424 488 709
www.vimar.eu/en

Neve. Pure Light.**NEVE****Neve.**

White,
luminous:
Neve brings
light into your
home and
comfort into
your life. With
its rigorous
design and
the Vimar's
quality you
know.



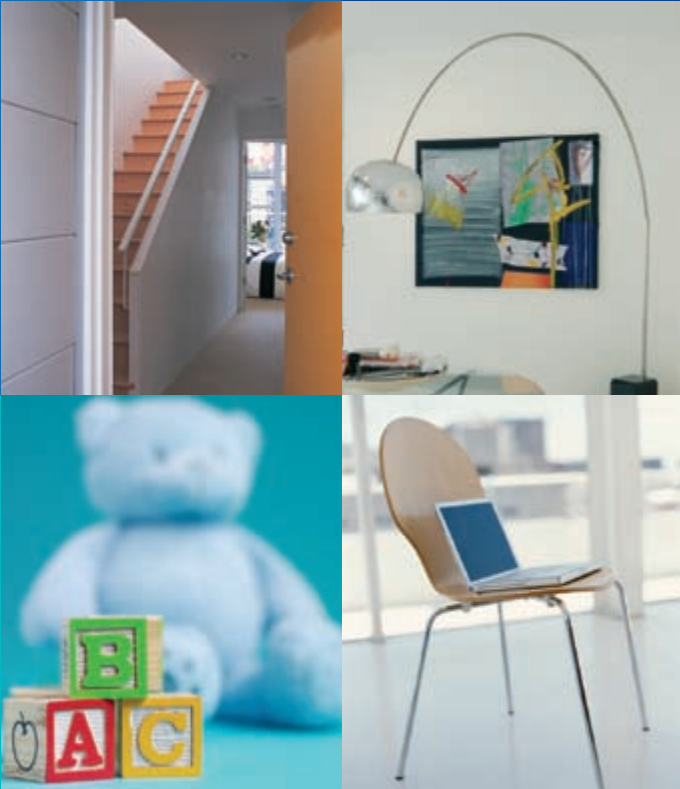
Competitive quality. The value of the Vimar's products is indisputable. But what is new is Neve's price. Designed for the world market, Vimar offers hallmark quality at everyone's reach.



Safety is important. Especially for our children. Neve sets your mind at rest. And safe children means happy parents. Thanks to Neve's SICURY function, a special shutter that prevents accidental contact with power sources.

Italian design. International standards. Ergonomic buttons, low, dynamic cover plate, restrained geometry: Neve is Italian design par excellence. But designed for the whole world, with standards and modularity which make it easy to install in any situation

The right choice for your home. And for your work. Neve also has phone, fax and internet solutions: top of the range reception quality makes sure that your home and office both have the best – and best looking – equipment on the market.



Neve. Control your lighting and power needs, safety and communications. All basic functions to bring Vimar quality into your home.

Blank modules and cable outlets



09041
Blank module
09044
Cable outlet

1P 1-way switches 250 V~



09001
16 AX, lightable
09001.2
16 AX, lightable - 2 modules
09013
Reversing, 16AX, lightable

1P 2-way switches 250 V~



09005
16 AX, lightable
09005.2
16 AX, lightable - 2 modules

1P push buttons 250 V~



09008
NO 10 A, lightable
09008.2
NO 10A, lightable - 2 modules

1P special switches 250 V~



09050
NO 10 A push button, lightable name-plate - 2 modules
09060
2P 10 AX switch, arrows and central OFF

Dimmer



09147
120 V~, 30-500 W/ 30-300 VA
09146 230 V~, 60-900 W/60-300 VA
09153
230 V~ 100-500 W push-push

Socket outlets 250 V~



09201
SICURY 2P+E 10 A, P11
09203
SICURY 2P+E 16 A P17/11
09209
SICURY 2P+E 16 A P30 - 2 modules
09212
SICURY 2P+E 16 A, French - 2 modules
09234
SICURY 2P 16 A Euro-American (ø 4,8 mm)
09233
As above, without SICURY

Socket outlets 250 V~



09250
SICURY 2P+E 10 A, Argentinian
09253
SICURY 2P+E 20 A, Argentinian - 2 modules
09242
SICURY 2P+E 15 A, USA
09245 As above, without SICURY

Socket outlets 127 V~



09242
SICURY 2P+E 15 A, USA
09243
2 SICURY 2P+E 15 A, USA - 3 modules
09246 As above, without SICURY

Special socket



09330
2P 6 A 24 V (SELV), for 01620 plugs

Phone jacks



09320
RJ11, 6 pos./4 cont.(6/4)
09321
RJ12, 6 pos./6 cont.(6/6)

RJ45 socket and adaptor



09338.9
RJ45, cat. 5e, UTP
09338.C
For RJ45 with Keystone fixing

TV-RD-SAT 5-2400 MHz sockets



09300.01
Single connection, 1 male output, 1 dB
09310.05
Single connection, 2 male/female outputs, 5 dB
09300.10 As above, through-line, 10 dB
09310.10 As above, through-line, 10 dB

TV 80-462 MHz sockets



09313
Single connection
09313.S
Single conn., with 2 cord-grips

F-type



09318
F-type female connector (IEC 60169-24)

Buzzers



09377
120 V~ 50-60 Hz
09378
230 V~ 50-60 Hz

Signalling units



10492, /V, /AZ:
110 V~, 0,5 W
10493, /V, /AZ:
230 V~, 0,5 W

Lamps



14774: Incan., 12 V~
14775: Incan., 24 V~
14778: Neon, 110 V~
14779: Neon, 230 V~

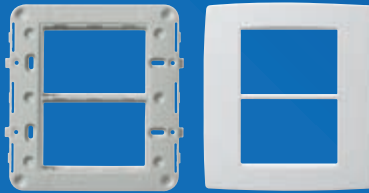
Frames and technopolymer cover plates



09602
2-module, claws, ø 60 mm/ 71 mm distance between centres boxes
09642.01
2-module
09643.01
2+2-module, 71 mm distance between centres



09613
3-module, with screws
09653.01
3-module



09619
6-module (4"x4" - 3+3), screws, for 09996 and 09996.AU
09659.01
6-module (4"x4" 3+3)