

Management using the Apple Home app

15. Management using the Apple Home app

Using a mobile device with iOS ver. 1.10.8 or later, the Administrator user can manage certain functions of the home automation system via the Apple Home app. In the event of systems that have already been installed, you need to make sure your installer updated the firmware of gateway 01410-01411 to version 1.9.4 or later. The Home app, which must first be installed on the same mobile device as the View app, will also allow you to manage functions with Siri too. The following table indicates the functions supported and the correspondence with the applications configured by your installer which you will see in the View App:

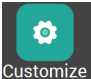


Function	Application
Lights	Lights
Roller shutters and related position*	Curtains and Roller shutters
Thermostats	Climate Control
Magnetic contact (signalling open doors and windows)	Sensors
Humidity sensor	
Temperature probe	

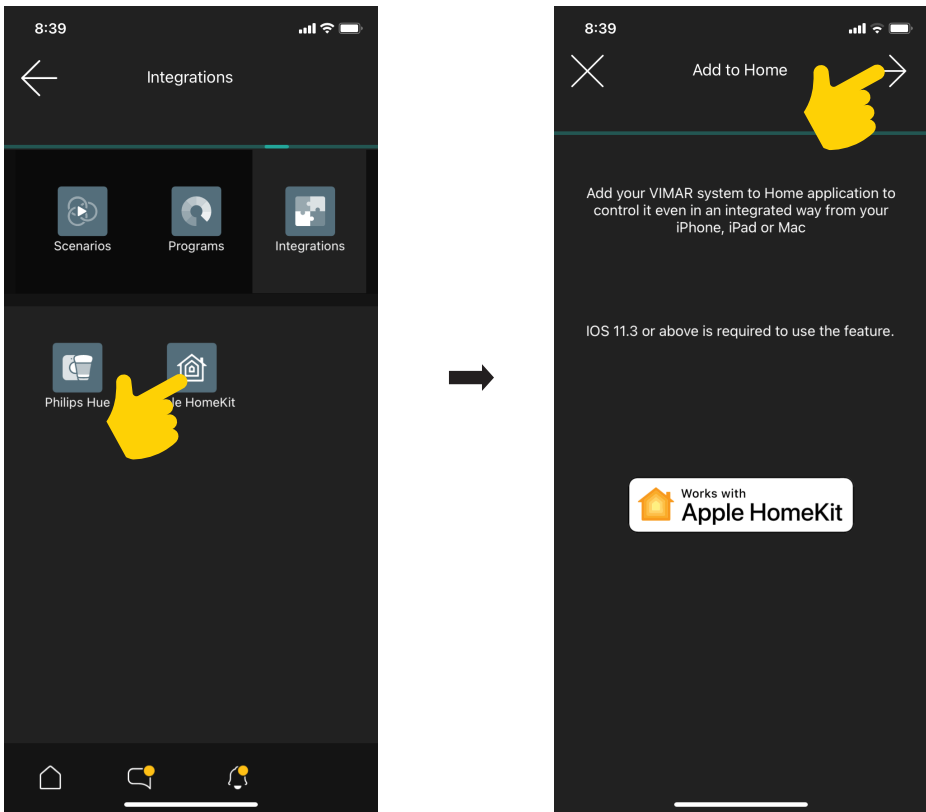
* The "Roller shutter without position" configuration is not supported on the Home app.


Requisites for the correct operation of the Home app:

- The mobile device on which the View app and the Home app are installed must be connected to the same network as the home automation system gateway (01410-01411).
- According to Apple standards, in order to use the Home app remotely, it is necessary for the respective hub to be present in the system (for instance, Apple TV or iPad).

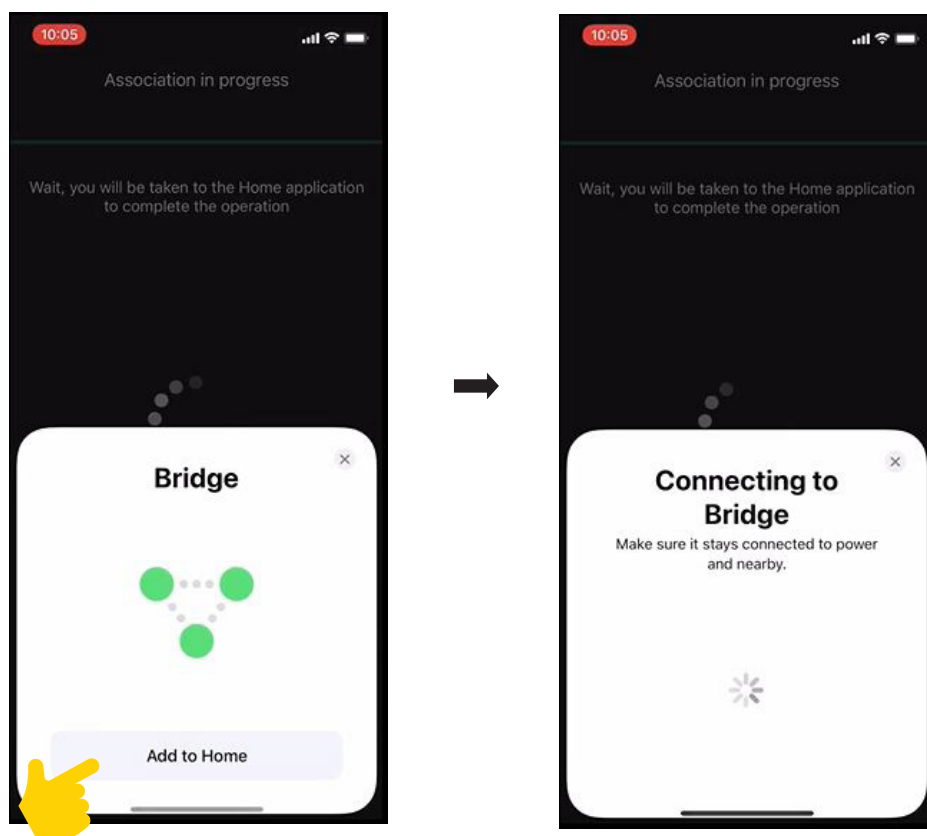
The procedure the Administrator needs to carry out is as follows:

1. From the "Customize" screen (), select "Integrations" () ad then "Apple Homekit" ().



2. Select  ; the gateway interfacing operation will begin (indicated with "Bridge") that will then allow you to view the functions on the Home App.

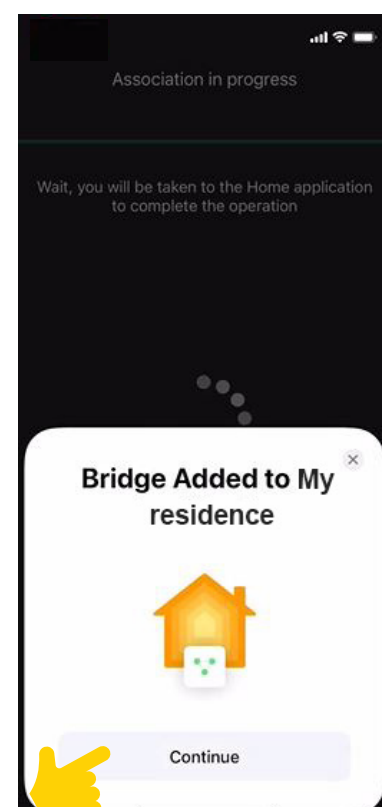
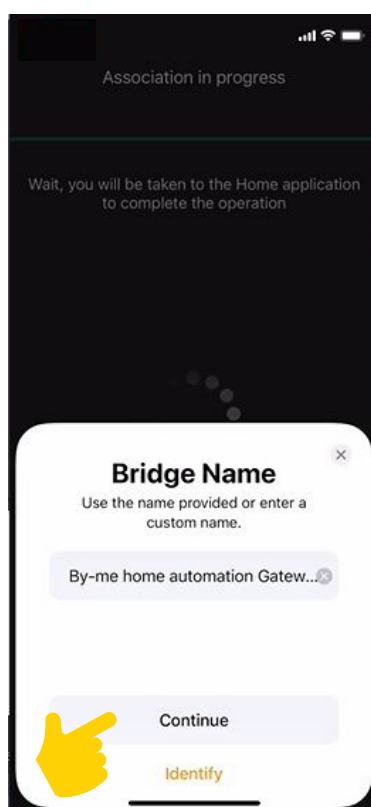
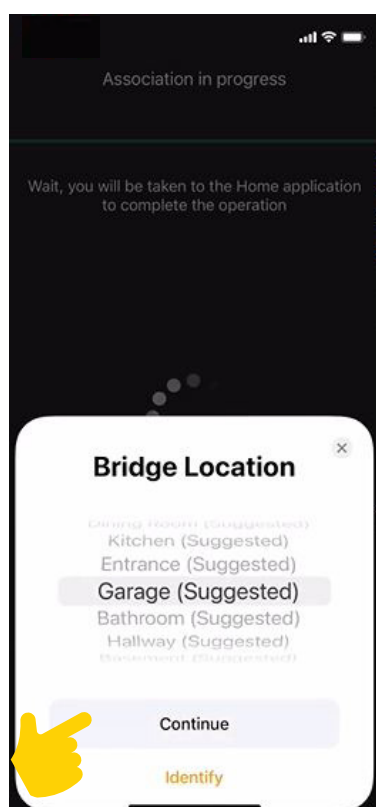
Management using the Apple Home app



3. Once connected, define the name and position of the Bridge in the environment, by selecting it among those suggested.

N.B. The name of the environments (and the list of applications inside them) is not shared between the View app and the Home app, so you need to define where to insert the application inside the environments created in the Home app.

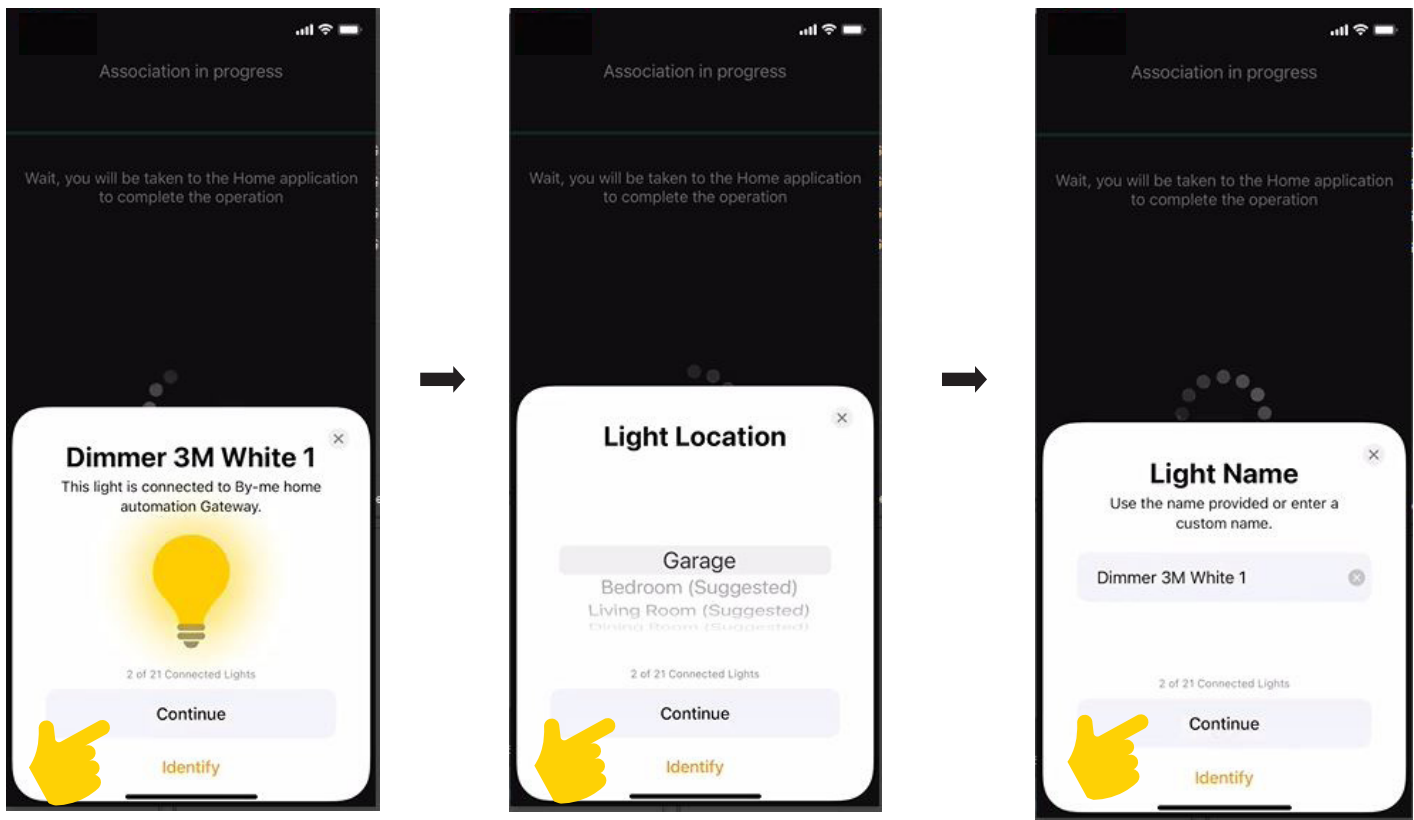
Select "Continue" once the setting has been made.



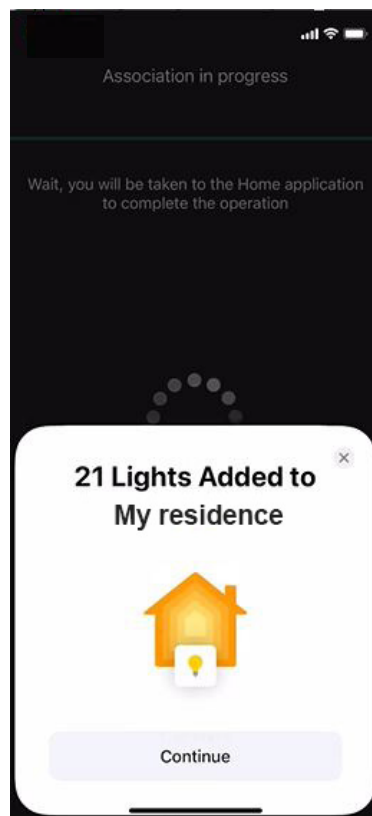
Management using the Apple Home app

4. The same operation should then be repeated for all the functions to be managed; the app will propose them one by one, so you can assign the environments to each one.

For example:

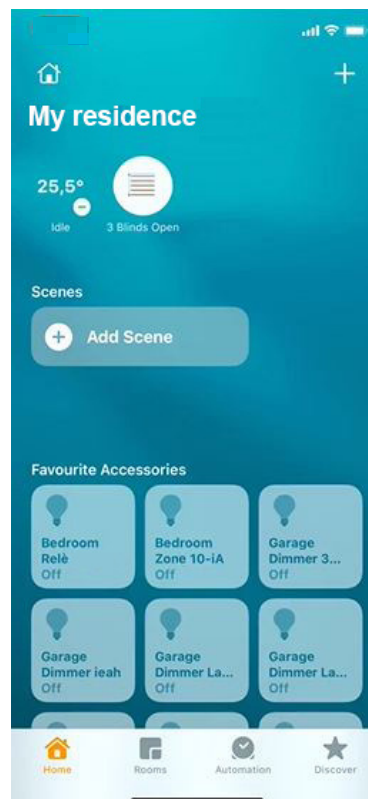


Once the functions belonging to the same application have been assigned, their total number will be displayed.



Management using the Apple Home app

5. You will then exit the association screen; open the Home app.



The scenarios created with the View app are not imported; you therefore need to create them again with the Home app using "Add scene".