

REFERENCES



VIMAR group
e n e r g i a p o s i t i v a



Something for every style.

If you want to know about us, listen to the people who have chosen our products. Homes, hotels, large public and private buildings, boats and yachts who put their trust in our products and systems, describe state-of-the-art technology, amazing attention to shapes and materials, sophisticated solutions and instant usability. In other words, a pursuit of aesthetic and functional perfection to suit every possible requirement. In intricate detail.

Customised solutions for every sector.

Whatever your construction field, Vimar Group has a solution to make the most of it. In more than 65 years in the industry, we have developed know how that guarantees electrical and home automation and building automation systems, video door entry and CCTV systems and automations of the utmost efficiency and aesthetic appeal. In a vast array of colour and shape combinations, there is something to match every style and every decor.



Eikon Evo



Eikon



Idea



Plana



By-me



By-me Marine



By-com



Elvox

HOTELS 6

RESIDENTIAL 27

SHIPS & YACHTS 41

TERTIARY 53



Vimar Group in the hotel industry: 5-star management.

Whether it's a cosy room in an Alpine cabin or a luxury suite overlooking the Caribbean sea, Vimar Group has the perfect series to manage the energy requirements of the context while blending in with the aesthetics as well. With solutions to suit any setting: classic and elegant, minimalist design, advanced technology or intentionally exclusive solutions to choose from. That's because our main goal is to make our customers feel at home.

HOTELS



HOTEL CROWNE PLAZA Athens, Greece



Idea

The appeal of technology.

The recently built Crowne Plaza hotel in Athens was fitted with technological and aesthetic solutions to respond effectively to the needs of contemporary travellers. The essence of the hotel lies in the clever combination of functionality and design. The former is provided by state-of-the-art services installed in the rooms and business area, and the latter by attractive contemporary aesthetics where much thought was given to the colours and materials used. The result is the perfect fusion of technology and visual appeal, the defining features of Vimar products, and in this case, Classica form of Idea range was the obvious choice for the light controls in the bedrooms and public areas.





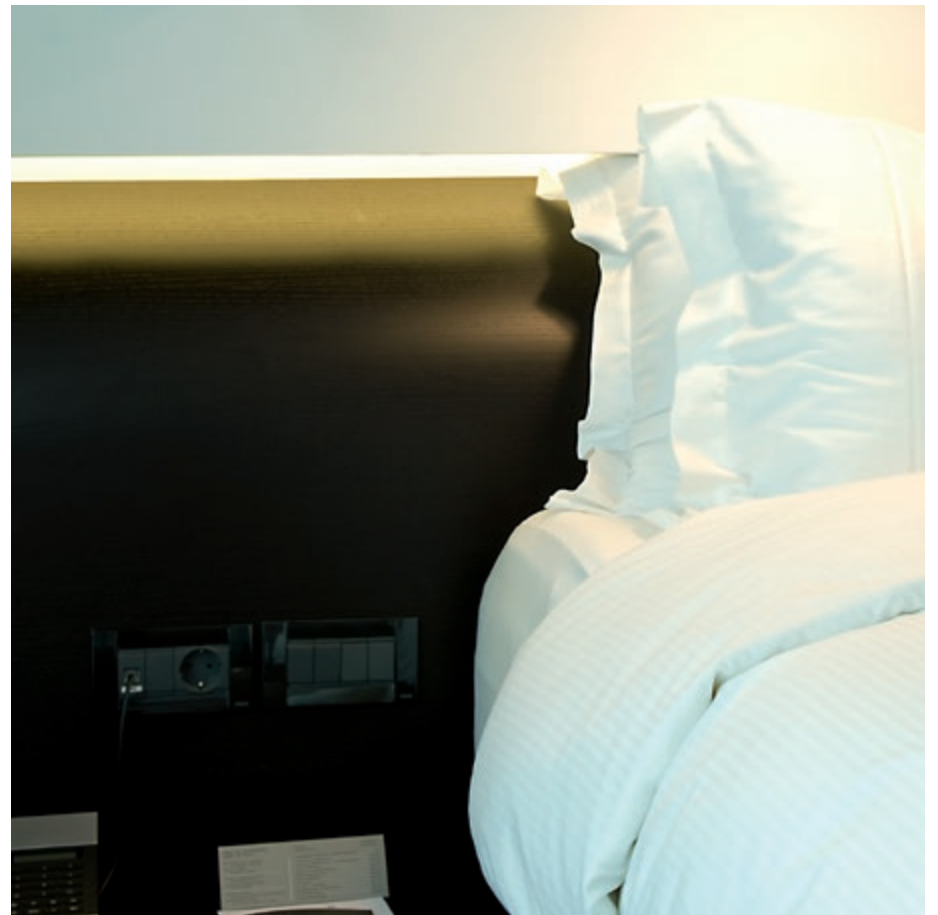
**THE MET
HOTEL**
Thessaloniki, Greece



Eikon - Idea

State of the art style.

Elegant, sophisticated and contemporary: 3 adjectives that perfectly describe The Met, the 5-star hotel opened in 2009 in Greece's second-biggest city Thessaloniki, designed by Zeppos-Georgiades & Associates. The hotel has a strong business focus, as the 13 different meeting rooms prove, as well as a passion for fine art, with 16 works of art from Cristina Chandris' private collection and pieces from the famous German artist Ralph Baiker. The understated elegance emerges in the choice of materials used in the lobby and VIP lounge: dark wood, white marble, black granite and glass, with a preference for exquisite darker shades. The Eikon with Classic cover plate complements this style, and the anthracite grey was a natural choice for light controls in the public areas of the hotel. The Idea series with Classica cover plate was picked for the bedrooms, to underline the sophisticated furnishings.





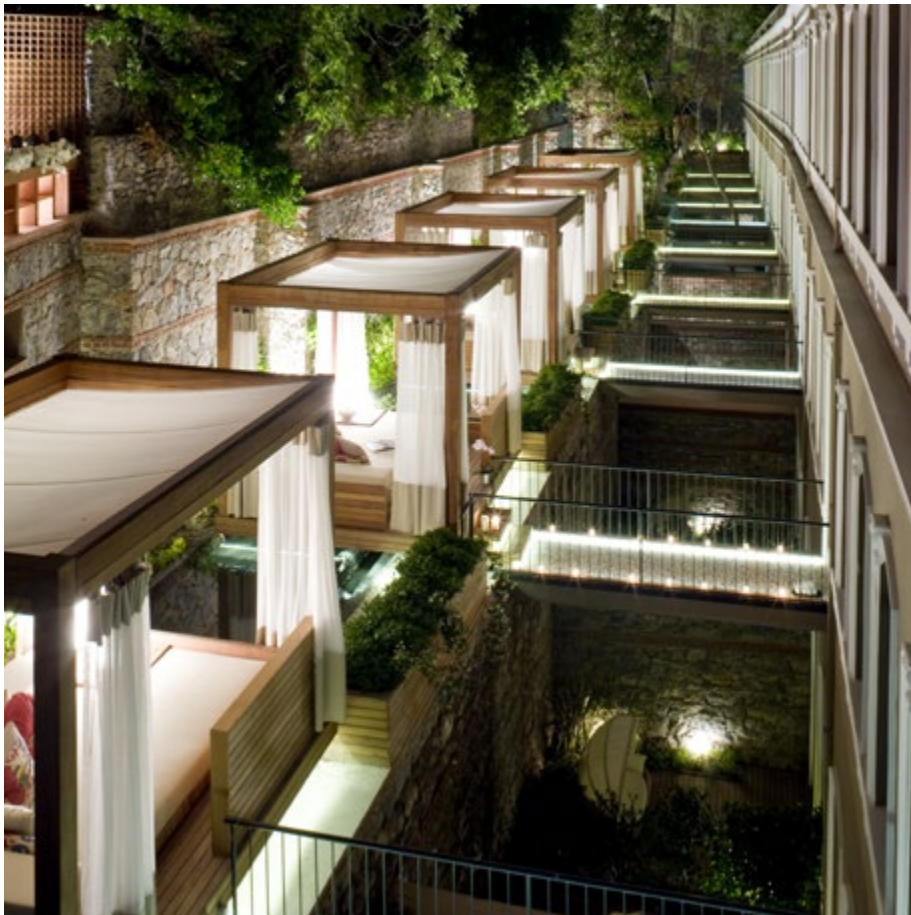
W
HOTEL
Istanbul, Turkey



Idea - Elvox

Design and tradition in perfect harmony.

The hotel is part of the famous Akaretler Row Houses in Besiktas. Built by Sultan Adbulaziz between 1870 and 1880, the recent full renovation preserved the original spirit and atmosphere, making it an emblem of the magnificence and decadence of the 19th century Ottoman Empire. The hotel design combines authentic Ottoman style with exclusive elements bringing a multi-sensory experience of contemporary design and comfort, embracing the heritage and culture of the historical building alongside the magic of Istanbul. The 134 luxury rooms and suites in the hotel have a private garden, terrace and beach hut. Each range features decor and lighting concepts in a sophisticated fusion of modern and traditional Turkish design: high ceilings, arched wood frame windows, airy spaces and state-of-the-art entertainment systems. The classic sobriety of the evergreen series Idea blends harmoniously into this prestigious context, while a sophisticated CCTV system watches silently over the safety of the guests.





**PRINCESS
DELUXE
RESORT & SPA**
Bodrum, Turkey



Plana

Minimalism and elegance in the Aegean.

Located in an area known as “Paradise Bay”, the Bodrum Princess Deluxe Resort & Spa enjoys an amazing view over the crystal clear waters of the Aegean Sea. The contemporary stylish interiors and understated discreet air they convey contribute to the sensation of being in the presence of something spectacular, with breathtaking landscapes framed by such grand architecture. The hotel covers an area of 400,000 m² and boasts a reception, spacious lobby with panoramic terrace, 6 restaurants, a mini supermarket, boutique, hair salon, health centre and spa, large public areas and high-tech meeting and conference facilities. Guest rooms are spread over 2-3 storey buildings with stepped terraces leading down to the beach. They are spacious, elegantly furnished and have a contemporary flourish. The very same features are encapsulated in the Plana range, picked for its mix of minimalist design and stylish appeal.





**HOTEL
DOLCE**
Munich, Germany



Plana - By-me



Multifunctionality par excellence.

Postmodern architecture and state-of-the-art technology: the two defining features of the Hotel Dolce, one of Europe's most dynamic facilities and perfect venue for large-scale events and conferences. All thanks to the large spaces and strategic location, just minutes from Munich airport. High visual impact features, such as the imposing glass dome dominating the main lobby, alternate with the functional design of the 6 meeting rooms and sublimely relaxing air of the winter garden and foyer. A prime example of how practicality and comfort can elegantly coalesce, as underlined in Vimar products. More specifically, as embodied in: By-me, the home automation system bringing effortlessly easy control, and the white version of the Plana range for light controls.



**ST. MARTINS
THERME &
LODGE**
Frauenkirchen, Austria



Plana - Elvox

A safari atmosphere in the heart of Austria.

The new St. Martins Therme & Lodge stands on the bank of its own lake next to the Neusiedler See-Seewinkel national park. The hotel combines the exciting atmosphere of a safari lodge with the latest spa facilities. The buildings have been harmoniously integrated with the breathtaking landscape of the surrounding nature reserve, yet offering up-to-date luxury and style. Every room boasts its own balcony, a bathroom with daylight, a flat-screen satellite TV and wired internet access. The Plana series is perfectly at home in this natural context, in the colour version that best reflects the discreet and elegant environmental feel of the interiors: white. A complex CCTV system with state-of-the-art cameras constantly monitors the communal areas, which are safely accessed through automations managing gates and road barriers.





**THE PULI
HOTEL**
Shanghai, China

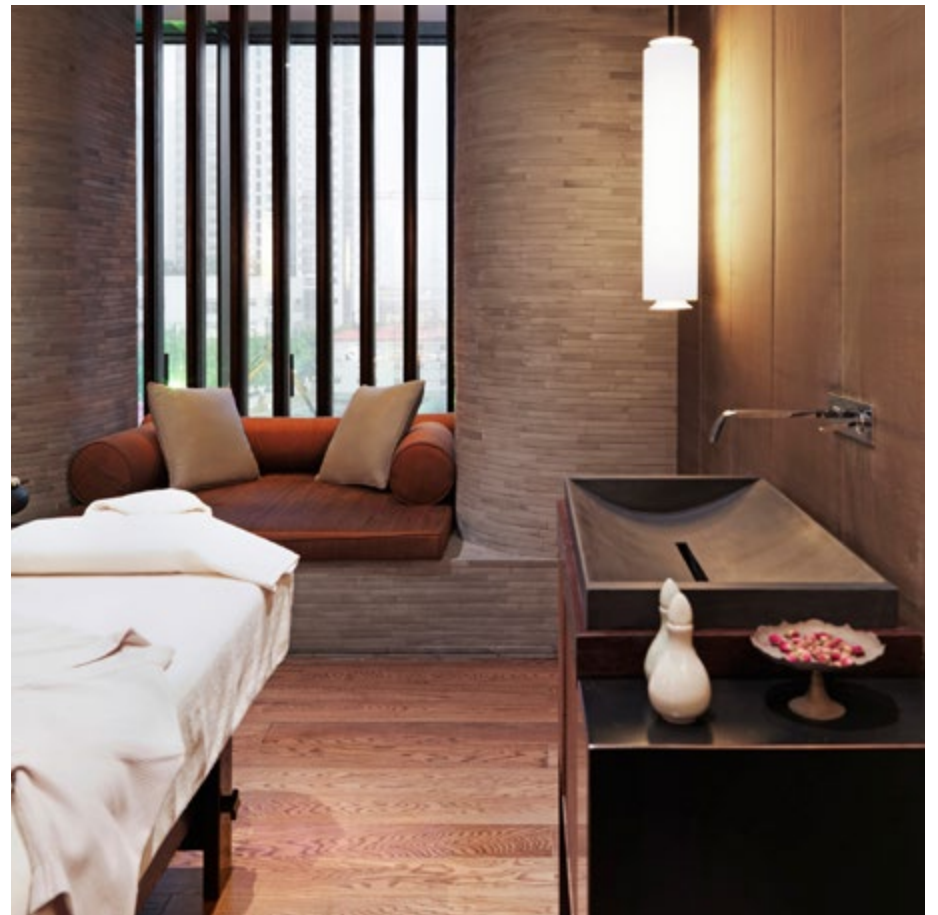


Idea

Prestige in Shanghai.

209 rooms and 20 suites, 26 floors, an array of spaces and terraces, crystal walls, an exclusive spa and right in the middle of downtown Shanghai, in one of the most prestigious streets of this oriental city. The Puli & Spa stands out for the absolute attention to detail and the skilful counterbalance that frames its rooms in sophisticated splendour, the ideal place for recharging your batteries both mentally and physically.

Traditionally inspired furnishing elements speak in unison with the lines and colours inspired by the best in modern design. The exclusive taste and architectural harmony have already won the Puli Hotel numerous awards and a place of honour in the top ten of the most elegant residences in the world. The style, precision and class of the Idea lighting controls blends perfectly with the general atmosphere.





**FORTEZZA
VISCONTEA
HOTEL**
Milan, Italy



Eikon - Well-contact Plus

The charm of history, the comfort of technology.

Magical atmospheres, constant references to its millenary history, views of enchanting landscapes. All offered in this unique setting, the Viscontea Fort in Cassano d'Adda, just a few miles from Milan. A castle built in the year 1000, offering a wealth of history of noble families, ladies and knights, famous people whose names are bound to the history of Italy. Recently restored, the Fort is now a luxury hotel offering the highest standards to ensure the best in comfort for its guests. Rooms and suites – all furnished with precious, skilfully hand-crafted furniture - are reached through a maze of corridors and wide glass arches that maintain the castle's medieval atmosphere. Numerous multi-purpose rooms are able to host all kinds of events.

A truly unique backdrop, a sophisticated and yet modern environment, where technology and works of art blend harmoniously with the Eikon series, where the functionality of conference rooms refuses to compromise on the comfort of their guests with the Well-contact Plus system that manages lighting, climate, automations and accesses to all the hotel spaces from a single point.





Full on comfort.

The Hyatt Regency Cancun hotel offers breathtaking views over the Caribbean sea and while it does beachside location to perfection, it also offers a vast range of conference and business travel services, with 8000 m² of meeting space and a modern business area. The 295 recently renovated rooms are furnished with understated, contemporary elegance, in primarily neutral tones giving a quiet and comfortable feel. The choice of white Plana light controls of contemporary minimalist design contribute to this sensation.

**HYATT
HOTEL**
Cancun, Mexico



Plana



Luxury by the sea.

Hotel Kempinski in Barbados Bay is located in one of the most enchanting inlets on the Turkish coast, with rooms, suites and apartments enjoying breathtaking terrace views over the Aegean Sea. Such beauty has not gone unnoticed: in 2009 the hotel was named the world's best beach resort by the Senses magazine. The interior decor is luxuriously refined, with high ceilings and wide-open spaces and a generous use of fine materials such as marble and noble woods. The Eikon with Classic cover plate blends seamlessly with this style.

**KEMPISKI
HOTEL**
Barbaros Bay, Turkey



Eikon



Sumptuousness and contemporary aesthetics in the heart of China.

Located in the new business district of Tianhe, the Grand Hyatt Guangzhou was designed by California-based architect Peter Remedios. The hotel has an enchanting, theatrical atmosphere that mesmerises guests as soon as they set foot in the lobby where they are greeted by a showstopping sandstone wall, enormous glass window overlooking the park and an internal bamboo garden with glass bridge across it. The 375 rooms in the hotel are stylishly furnished to fuse minimalist shapes and colours with exquisite materials and fine fabrics. In such a sophisticated context the natural companion are the products of the Vimar Group, hence the choice of Idea range light controls with Classica cover plates and Elvox automations to control all hotel accesses.

**GRAND HYATT
HOTEL**
Guangzhou, China



Idea - Elvox



High altitude luxury.

Set in the heart of the breath-taking Tatras mountain range in Slovakia at 1350 m, the Kempinski High Tatras is the ideal destination for a relaxing, stress-free break. The hotel has a fully-equipped health centre occupying more than 1300 m², graced with enormous windows giving spectacular views over the surrounding countryside.

The interiors are luxurious and cosy, decorated with fine materials exuding warmth like marble and light wood, to make guests feel immediately at ease. This atmosphere is maintained through the Eikon lighting controls which, thanks to the soft action system, are pleasant and silky to the touch.

**KEMPINSKY
GRAND HOTEL**
High Tatras, Slovakia



Eikon



Vimar Group at home: a healthy presence.

From a lakeside villa to an apartment in an historical building; from a loft downtown to a Renaissance villa nestling in green hills. Vimar Group solutions bring a touch of discreet elegance whatever the context, respecting and enhancing the identity of each, increasing comfort and safety, and managing home automation intelligently. With an ever vigilant eye on energy consumption.

RESIDENTIAL



PRIVATE PALACE

Venice, Italy



Eikon - Plana - By-me

Home automation travels by gondola.

The house was built from an old 15th century Venetian depot that was once used to store building materials and is now an elegant building in the heart of a hidden and undiscovered part of Venice by whistle-stop visitors. The famous Duge table made by Carlo Scarpa dominates the room from the centre and a huge window overlooking the canal gives a bird's eye view of the skilled gondoliers guiding young couples or tourists in raptures as they discover the romantic city.

The predominant colours, white and gold, alternate to create a splendid blend of essential modernity and high-impact classicism. A harmonious marriage of antique and new, aesthetics and functionality, in which the By-me home automation system is used to control and monitor the whole home. The sophisticated game of alternations is again underlined in the choice of electrical devices: the soft, rounded shapes of Plana meet the rigorous design of Eikon with Classic cover plate. While the colour coordination remains true to the design: gold for the cover plates and white for the buttons and controls.





RESIDENTIAL COMPLEXE

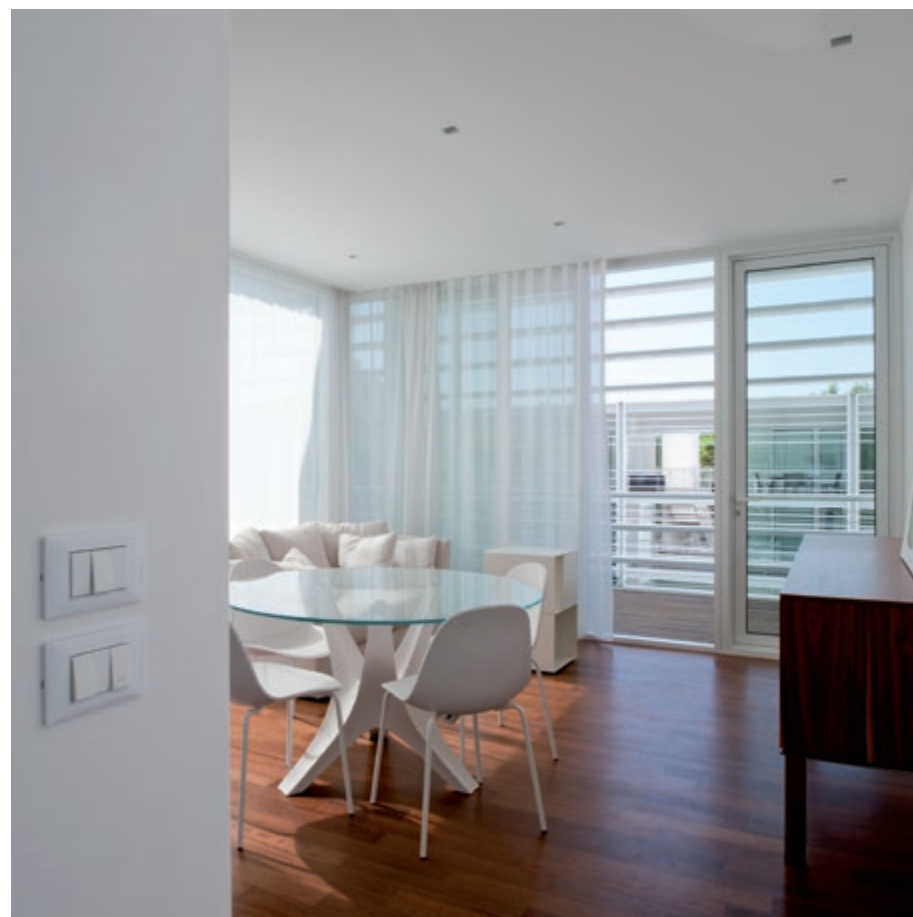
Venice, Italy



Plana - Elvox

Ultimate minimalism.

Jesolo Lido Village is a residential complex designed by the internationally renowned New York-based architect Richard Meier, also responsible for the Jubilee Church and Ara Pacis museum in Rome. The style inside is elegant and rational: the pure white walls are perfect companions to the green pine woods and crystal blue of the swimming pools visible on the other side of the large sliding doors. The Plana range - in this case with Reflex snow technopolymer cover plate - fits perfectly in this context - providing a frame for the switches and timers in each apartment. The double technopolymer layer in the cover plates acts as a kind of lens creating interesting reflected light effects. Outside the homes, Elvox video door entry plates offer the safety of knowing who's at the door, while the automations accurately control the garage doors and the road barriers at the entrance to the complex.





**PRIVATE
RESIDENCE**
Vicenza, Italy



Eikon - By-me



An energy-saving masterpiece.

Consistency between interiors and exteriors and a strong focus on energy efficiency are the two distinctive features of architect Massimo Vallotto's San Carlo complex. The south-facing aspect allows more optimal use of energy; wall and window insulation reduce energy loss; the condensation boilers and underfloor heating guarantee high output; and window screens cut out overheating in the summer months. Together these measures and installation of the By-me home automation system guarantee efficient system management which helped the building to obtain key energy certifications from Klima Haus and Sacert.



PRIVATE VILLA

Genova, Italy



Eikon Evo - By-me - Elvox

Perfection is a perfect aesthetic.

Surrounded by luxurious parkland, this historical complex - carved out of a dip in the hillside on which the main building rests - forms a horse-shoe around an immense lawn, and is the result of an elaborate design project which had to consider numerous architectural and landscape constraints.

Inside the house - where white tones and steel reign supreme - tradition and modernity coalesce in perfect harmony. Traditional Italian building materials emphasise the minimalist features and contemporary design of the furniture and furnishings. The discreet presence of the By-me system, dressed for the occasion in the elegant forms of Eikon Evo and the technological sobriety of the anodised aluminium grey Next - is used to monitor every room in this impressive residence, while the entrance gates are skilfully controlled by Elvox automation.





TUSCAN VALLEY HOUSES

Istanbul, Turkey



Idea - Elvox

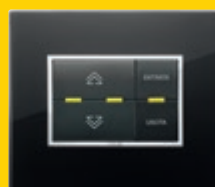
Tuscan atmospheres charm Istanbul.

World class property developer Emaar Properties, has brought its vision and international experience to its first project in Turkey, to create “Tuscan Valley”, where nature and modern life merge, creating flawless lifestyle. Inspired by traditional Tuscan architecture and further embellished by the marvellous view over lake Büyükçekmece and the Marmara sea, Tuscan Valley Houses offer residents a truly sophisticated lifestyle. The complex, in which safety is assured by the many cameras in the Elvox CCTV system, comprises 540 luxury units, including villas, apartments and city studio flats, with 12 different types varying in size from 149 to 940 m². An architectural mosaic where the ancient traditions and Tuscan atmosphere fuse with contemporary design and an essence of excellence, the perfect setting for the Idea range, an enchanting part of the electrical system.





**DEI VESCOVI
VILLA**
Padua, Italy



Eikon Evo - By-me

Between art and nature.

Nestling on a rolling hill top, surrounded harmoniously by greenery lies Villa dei Vescovi, an extraordinary piece of 16th century Italian architecture.

Over the centuries the villa has maintained its harmonious liaison with the surrounding landscape, following the will of the artists that designed and built it. Today Villa dei Vescovi remains a place for meditation, where you can stop and enjoy the pure beauty of its interiors and the landscape. But it is also a place of exchange, dialogue and progress, the meeting place of a large group of enlightened humanists.

Today, after careful renovation, the villa has been restored to its ancient splendour to become a multi-purpose residence that, equipped with the By-me automation system, can be managed simply and quickly, adapting to respond to the various uses. The Vimar devices, framed by total white crystal Eikon Evo, blend perfectly with the frescoed walls and attract the admiring eye of visitors.





Vimar Group brings functional aesthetics to ships.

We took what we've achieved on dry land out onto the open sea. With the same eye for technology, efficiency and aesthetic appeal, the Vimar range took to the high seas on board luxury yachts and fantastic international cruise ships. Safety, reliability, research, design and a wide range of styles to pick from: this is the secret to Vimar's success at sea.

SHIPS & YACHTS



**FERRETTI
YACHTS**



Idea

Made in Italy conquers the seas.

24 metres long, the interior of the Ferretti 780 has a totally innovative layout, solid teak wood finishes in place of the cherry wood traditionally used. The design choice to integrate the staircase leading up to the flying bridge into the boat wall adds visual continuation from the stern towards the bow, increasing the size of the conversation area fitted with double sofas with a contemporary design. Ferretti yachts have become an emblem of Italian production around the world, and for this reason the company chose Vimar Group as its partner, to ensure top functionality without compromising on prestigious aesthetic values, for all its sea jewels.





**AZIMUT
YACHTS**



Eikon - Idea

Riding the wave of design.

Graceful, elegant and sporty: three adjectives that sum up Azimut 70, one of the many jewels in the Azimut Benetti crown, the all-Italian international business success renowned the world over. This yacht stands out for the amazing comfort of the interiors and the excellent performance, satisfying even the most demanding of leisure cruisers: it is 21.62 m long, 5.56 m wide and has a cruising speed of 28 knots. From the outside, the first thing that catches your attention are the unexpected, rounded lines, the signature style of Stefano Righini. The vessel sleeps 10 and the interiors are carefully furnished with fabric-lined panels, pickled oak furniture and wall elements, dark brown and crocodile-printed leather units, fine marbles, teak gratings, crystal and stainless steel. In this prestigious context, the Eikon and Idea ranges was the perfect choice to guarantee the same high standard of functionality, reliability, practicality and all-Italian aesthetic appeal for the electrical devices too.





SUNSEEKER



Eikon - By-me Marine

The pearl of the sea.

The Sunseeker 40 metres Yacht is for those who enjoy independence and extended cruising. Offering extreme blue water credentials, this stunning new addition is designed and built to RINA unrestricted navigation classification. Palatial in scale, the 25-knot, 40 metre yacht presents ultra-spacious accommodation for up to 12 guests with clever layouts that allow the crew of 9 to move discreetly about the boat.

On-board comfort is assured by the By-me Marine automation system, offering an extraordinarily wide choice of configurations to suit all the needs of the guests, including centralised on-board temperature management and the automated opening of the balconies in the forward master suite. And all light fittings elegantly dressed in the Eikon range.





MSC CROCIERE Magnifica



Plana Silver

Cruising in comfort.

After the Msc Musica, Msc Fantasia and the Msc Splendida, Vimar products were also installed in Msc Magnifica, the latest gem to join the MSC Crociere fleet. Sophisticated and elegant, the all-Italian made MSC Magnifica combines extraordinary comfort with innovative design and cutting-edge technologies which also focus on safeguarding the marine ecosystem. Vimar products were a natural choice in this context, and the white, matt silver and matt champagne Plana light controls fitted in perfectly with the distinctive class and elegance of the ship. Plana takes care of passenger comfort in a variety of ways, from bedside light controls, high-efficiency emergency LED hand lamps, universal sockets and TV and data transmission sockets to minimalist, ergonomic design and the night-time back lighting of the elegant laser-cut symbols.





**SEABOURN
CRUISE LINES
Sojourn**



Plana

Italian luxury steps on board.

Also the new Seabourn Sojourn is a floating luxury palace offering the mere 462 passengers the highest standard of accommodation and a truly unique cruise experience. Built in the Mariotti Shipyard in Genova, the Seabourn Sojourn represents the excellence of luxury mid-size Italian shipbuilding: from the sophisticated technology and fine materials used to decorate the interiors, to the elegant design of the luxury furnishings embellishing the 225 luxury suites with private veranda and marina on the stern giving direct access to the sea. In this context, Vimar products are an undisputed and natural part of this unique mix - the world's first - of such aesthetic perfection and technological reliability. Chosen in its candid white technopolymer version, Plana occupies a natural place in various settings on board, managing and distributing energy without waste thanks to an intelligent technology with intuitive controls that regulates lighting, temperature and appliances to ensure comfort and safety.





Vimar Group in big buildings: using technology to make things easier.

Efficiency and practicality are Vimar Group's prime objectives in the construction sector. From offices and private studios to big showrooms and sports halls, business centres to shopping malls and even museums and galleries. In short, all spaces that need safe, functional intelligent energy management. With an eye for energy saving.

TERTIARY



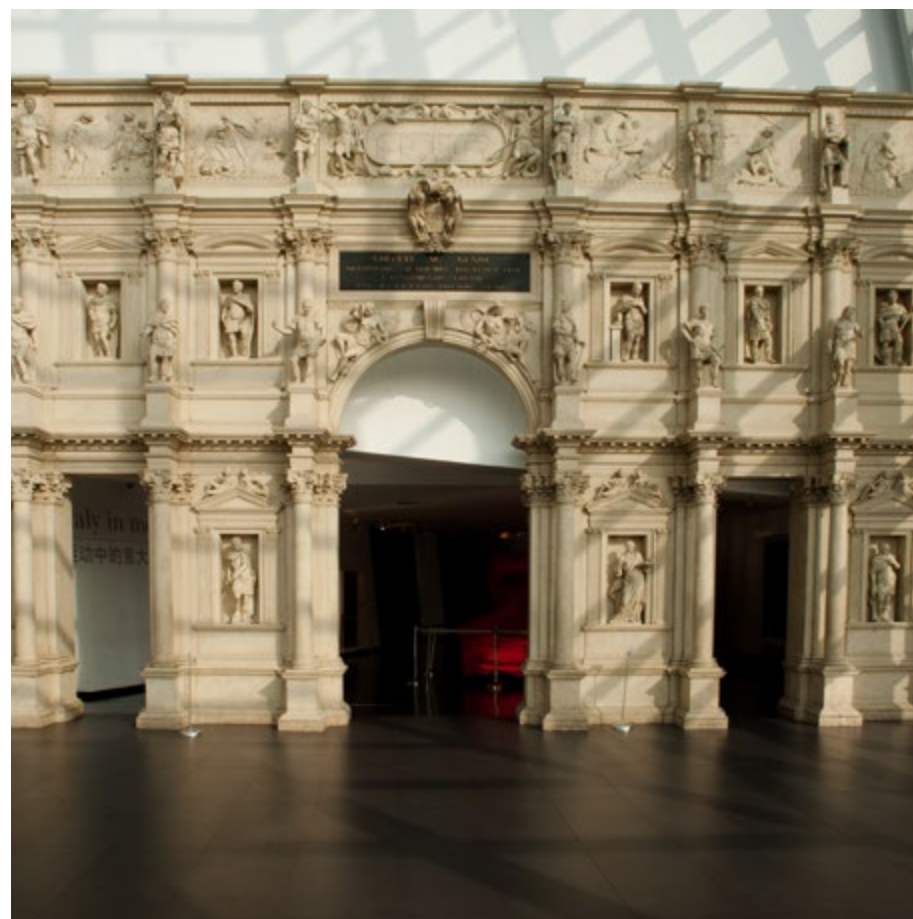
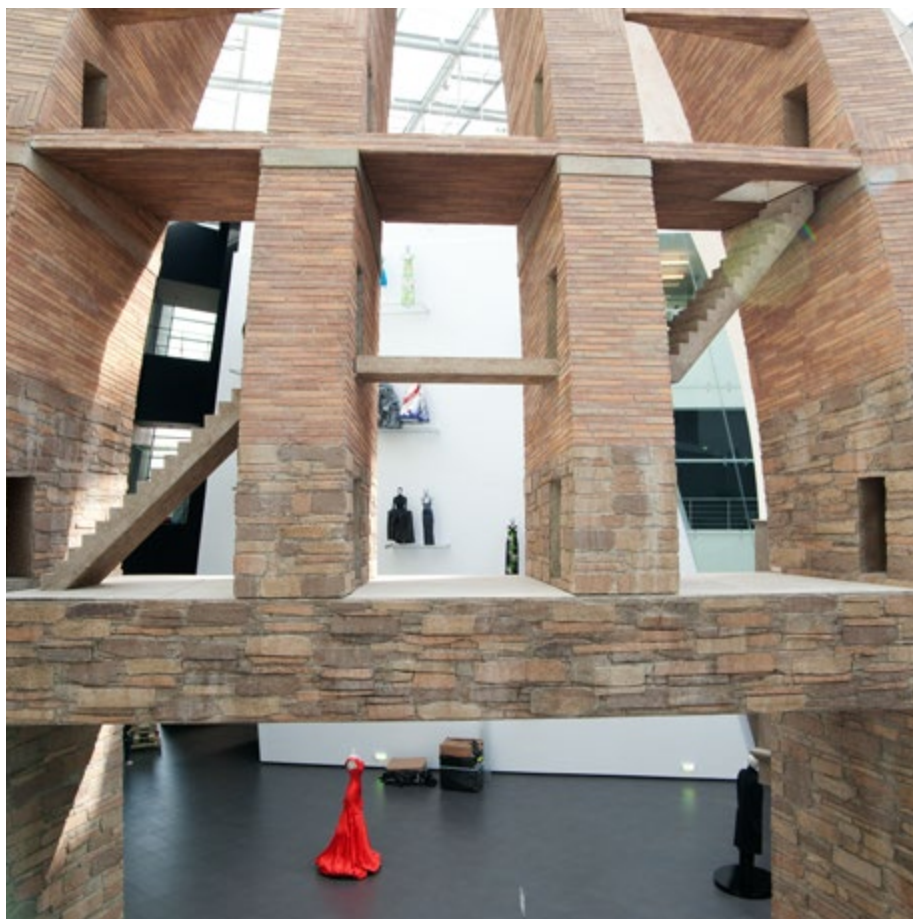
EXPO 2010
Italian pavilion
Shanghai, China



Eikon Next

Ambassadors of Italian quality around the world.

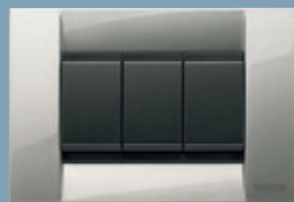
The 2010 World Expo in Shanghai was the most visited event in history, attended by more than 70 million visitors. Italy played a front-line role with a pavilion designed by architect Giampaolo Imbrighi, who fully embraced the event theme “better city better life”. Imbrighi created an environment in which Italy’s ability to manage traditional collective spaces such as squares, lanes and small villages while pursuing scientific research with an increasing focus on environmental sustainability. Vimar Group has made this philosophy its own and it was no coincidence that the General Commission of the Italian Government chose the Italian company to provide the light controls used to light up the Italy pavilion. In terms of aesthetics, the Eikon Next range was deemed the perfect choice for the cover plates, which were laser engraved with the Italian Pavilion Logo as further confirmation of the quality of the 100% made-in-Italy products.





SAN FRUTTUOSO ABBEY

Genova, Italy



Idea

Where quality and technology join with history.

Located in a deep gorge carved by the water along the jagged Monte di Portofino coast, this ancient monumental complex lying in a unique landscape setting is a valuable part of the historical and architectural heritage.

Built between the 10th and 12th centuries, over the centuries the abbey of San Fruttuoso has been a Benedictine monastery, a pirates' cove and a humble fishermen's dwelling. Today, after careful renovation works which lasted more than twenty years, the original features of the Chloisters, the Abbey, the tombs of the Doria princes, the chapterhouse and the church have been recovered. The ancient paintings discovered and many archaeological findings emerging from the excavations accompany visitors on their tour to discover the millenary history of the abbey complex.

As part of the general safeguarding of the historical and architectural value of the buildings, Vimar Group's contribution to this restoration project involved the installation of the Idea series throughout the whole electrical system.





**ARCHITECTURE
OFFICE**
Florence, Italy



Eikon - By-me

Work and leisure in a single project.

The FORMA architecture firm transformed an old warehouse in the heart of Florence. The project, by architect Santoni consisted of two separate but communicating buildings, which together created a single, minimalist but extremely inviting environment in which the work-related and professional aspects converge with other more relaxation-oriented activities. One environment serves as a workshop-atelier whilst the other is the more intimate, private one. The firm installed a significant number of Vimar automation devices, some in the sophisticated Eikon vesture, others with the soft, minimalist Plana design: white to match the interiors, practical technopolymer material and easy, uniform and symmetrical shapes.





**BUSINESS
CENTRE**
Bergamo, Italy



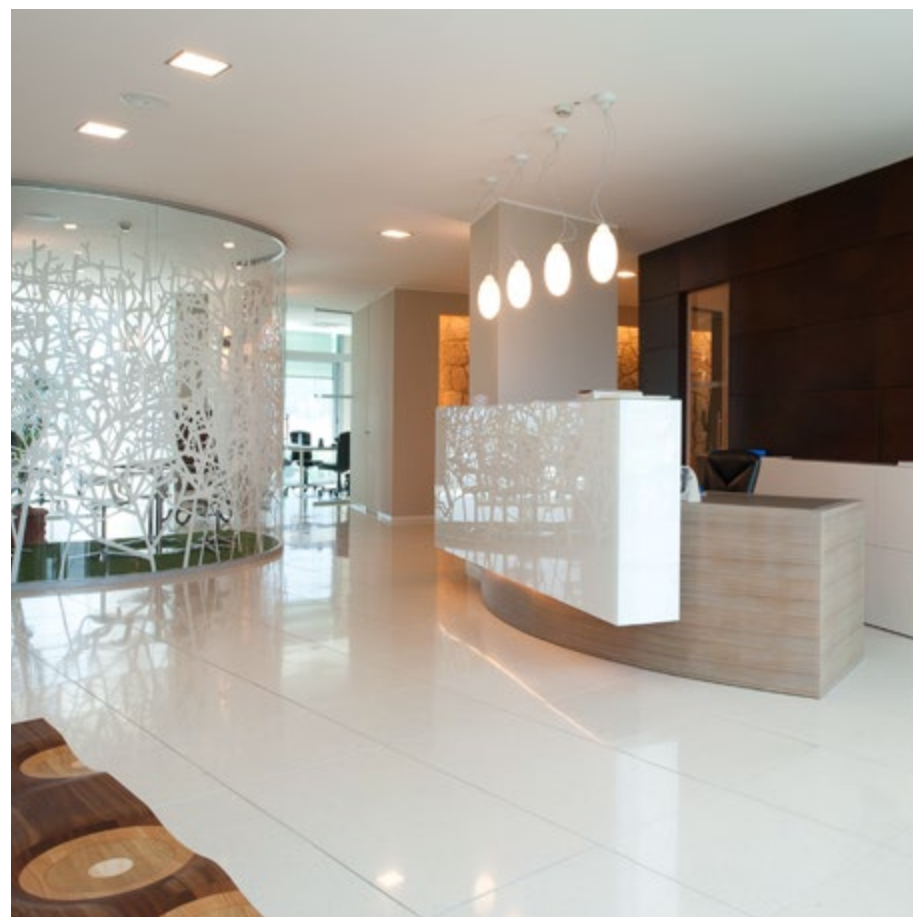
Eikon Evo - By-me - Elvox

An automated heart beats under a skin of glass.

The ultra-modern Ecoforum business centre was designed with a vigilant eye on environmental sustainability using cutting-edge technologies which use renewable energies to reduce environmental impact.

The building's jewel in the crown is its "double" skin" façade, comprising two glass surfaces separated by a cavity in which air flows (cool in the summer and warm in the winter) to offer high insulation, avoiding energy waste and creating an internal micro-climate which guarantees excellent well-being.

Such a sophisticated, technologically advanced setting could not be without the By-me automation system to control and manage the whole building. Moreover, the data transmission is managed by Netsafe, Vimar's structured cabling system, and safety is guaranteed by the cameras of the Elvox CCTV system. All the internal devices are marked by the elegant shapes of Eikon Evo, while outside the Elvox video door entry plates with alphanumerical keypad and biometric sensor oversee security on the doors.





**BUSINESS
CENTRE**
Udine, Italy

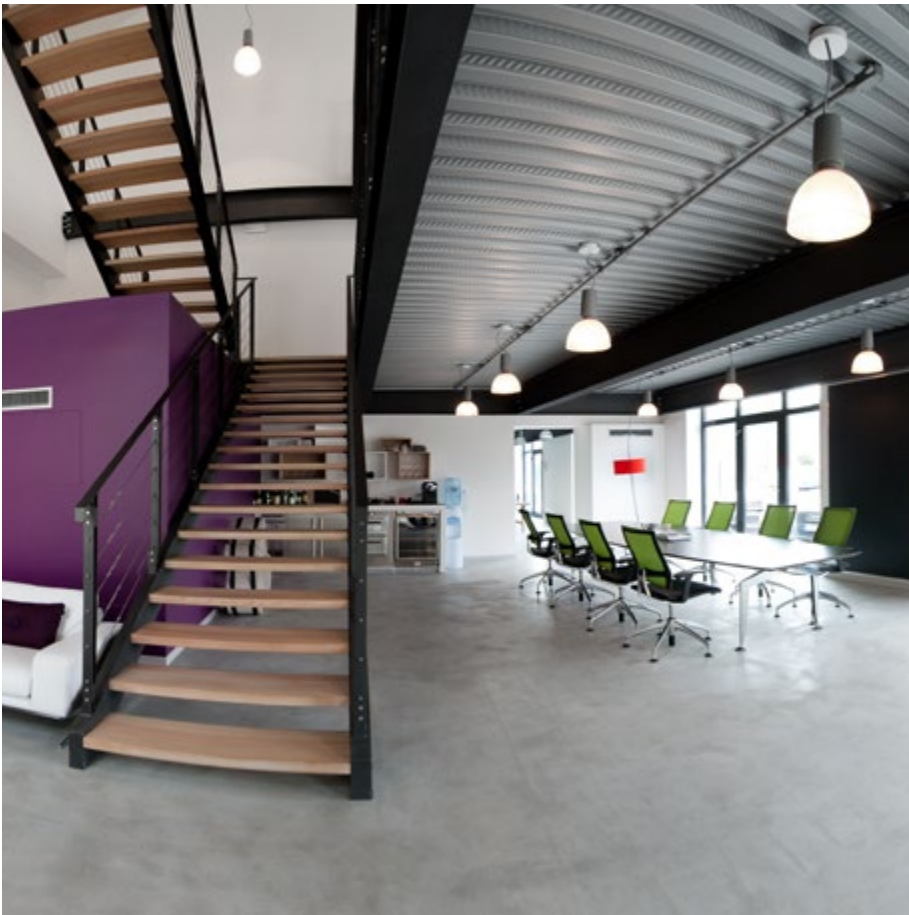


Plana - By-me - Elvox

Made-to-measure technology.

Young, dynamic, cosmopolitan, and looking to the future. Covering three floors and fully open-space, the offices in this business centre strongly represent the personality of their inhabitants, whose passion for architecture and interior design have led to the creation of spaces which fully reflect their life styles.

A bespoke headquarters, from the By-me automation technology to the choice of Plana cover plates for the many electrical devices, from the security assured by the Elvox camera surveillance system to the furniture and layout of the different spaces. A place that breathes informality and the desire for dialogue, and which sets out to make the work environment a safe, pleasant place to live.







B.D14010 EN 1401
8 007 352 150571



VIMAR

Viale Vicenza, 14 · 36063 Marostica VI · Italy · Tel. +39 0424 488 600 · Fax +39 0424 488 709 · www.vimar.com