



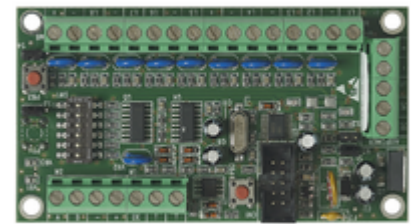
## Surface mounting components: By-alarm 8-input expansion module

**01704**

Safety / By-alarm Plus / Surface mounting components / Non-modular components

### By-alarm 8-input expansion module

By-alarm configurable 8-input expansion module for potential-free contacts, cord for roller shutter, passive non-piezoelectric shockdetectors, with additional power supply battery status control function



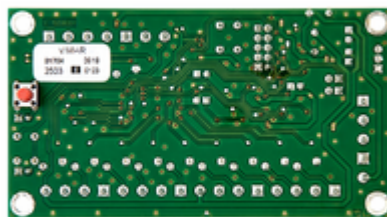
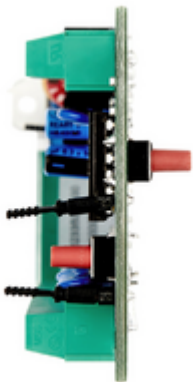
### Product Status

9 - Discontinued

### Sheets, Manuals, Documentation

- [Multilanguage instructions sheet \(1536 kb\)](#)
- [Anweisungsblatt \(806 kb\)](#)
- [Installation diagrams \(585 kb\)](#)

### Gallery



### Legal

Vimar reserves the right to change at any time and without notice the characteristics of the products reported. Installation should be carried out by qualified staff in compliance with the current regulations regarding the installation of electrical equipment in the country where the products are installed. For the terms of use of the information on the product info sheet see [Conditions of Use](#).