



Shared components: IP 4.3in PoE touch screen 8M black

01420

Smart systems&products / View smart system / Shared components /
Devices

IP 4.3in PoE touch screen 8M black

Touch screen with 4.3" IP capacitive colour display, used as a home automation system supervisor, IP/Due Fili Plus internal video entryphone, IP video camera and CCTV system manager, power supply PoE or 12-30 Vdc, with built-in 8 (4+4)-module mounting frame, to be completed with Eikon, Arké or Plana cover plate, black

Product Status

3 - Active

Minimum order quantity

1 NR

Sheets, Manuals, Documentation

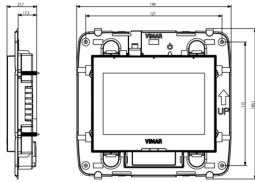
- [Multilanguage instructions sheet \(1359 kb\)](#)
- [Manuale piattaforma View IoT Smart Syst. \(9599 kb\)](#)
- [Manuel installateur app View Pro \(6937 kb\)](#)
- [Manual del instalador View Pro \(6921 kb\)](#)
- [Installer manual View IoT Smart Systems \(7021 kb\)](#)
- [Εγχειρίδιο τεχνικού εγκατάστασης \(7114 kb\)](#)
- [Installationsanleitung View Pro \(6907 kb\)](#)
- [User Manual Touch screen \(5248 kb\)](#)
- [Manuale utente touch screen \(4848 kb\)](#)



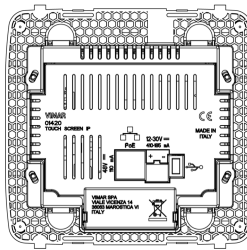
Video

- Integration with video door entry system
- Energy control
- Lights and roller shutters configuration
- System setup
- Integration with burglar alarm system
- Climate control customisation
- Scenario customisation
- CCTV and alarm customisation
- Philips Hue integration

Drawings



Space view



Backside view



3D View

Technical data

- **Class group:** Installation bus systems
- **Class:** Signalling and operation panel for bus system
- **Bus system KNX:** No
- **Bus system KNX-RF (Radio Frequent):** No
- **Bus system radio frequent:** No
- **Bus system LON:** No
- **Bus system Powernet:** No
- **Other bus systems:** Other
- **Radio frequent bidirectional:** No
- **Assembly arrangement:** Other
- **Model:** Signalling and operating panel
- **Mounting method:** Flush-mounted
- **Text field:** No
- **Display:** Colour
- **Touch function:** Yes
- **Additional interfaces:** Ethernet
- **With bus connection:** No
- **Material:** Glass
- **Material quality:** Other
- **Colour:** Black
- **RAL-number (similar):** 9004
- **Degree of protection (IP):** IP20

Certifications

- 00. CE Marking - EU
- 37. Marking - Morocco
- 43. UKCA mark - Great Britain
- 92. RoHS UAE
- 99. WEEE Directive ([download](#))

Packaging



Code 8007352586093
Quantity 1 NR
Dim. 21.7x22.1x8.3 [cm]
Weight 432.2 [g]

Code 8007352612594
Quantity 8 NR
Dim. 51x34x26.5 [cm]
Weight 4,176 [g]

Legal

Vimar reserves the right to change at any time and without notice the characteristics of the products reported. Installation should be carried out by qualified staff in compliance with the current regulations regarding the installation of electrical equipment in the country where the products are installed. For the terms of use of the information on the product info sheet see [Conditions of Use](#).