



Shared components: Loads control module 3IN current sensor

01455

Smart systems&products / By-me Plus / Shared components / DIN devices

Loads control module 3IN current sensor

Load control module, 3 inputs for toroidal current sensor, measurable powers 25 W-100 kW, single phase power supply 120-230 V 50/60 Hz three phase 230/400 V 50/60 Hz, installation on DIN rail (60715 TH35), occupies 1 x 17.5 mm module. Supplied with toroidal current sensor 01457



Product Status

3 - Active

Minimum order quantity

1 NR

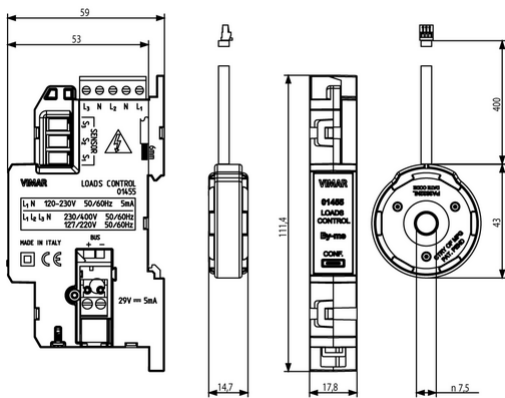
Sheets, Manuals, Documentation

- [Multilanguage instructions sheet \(878 kb\)](#)
- [By-me automation-fw Compatibility \(206 kb\)](#)

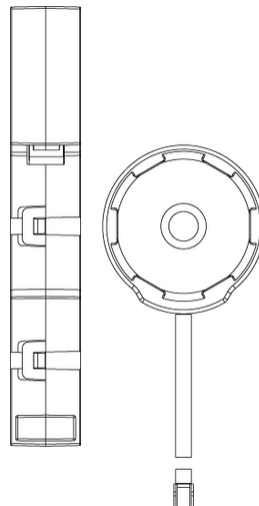
Gallery



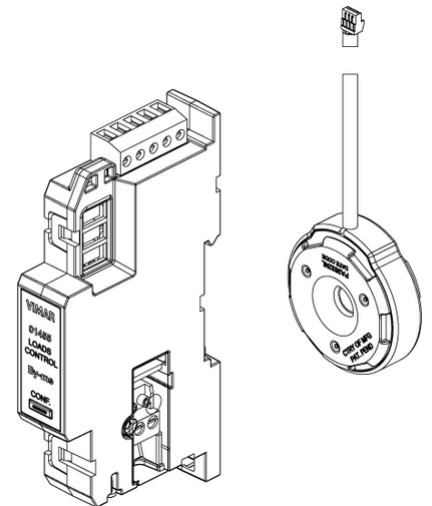
Drawings



Space view



Backside view



3D View

Certifications

- 00. CE Marking - EU
- 01. IMQ - Italy ([download](#))
- 37. Marking - Morocco
- 46. UK PSTI compliance ([download](#))
- 96. Electrotechnical expert ([download](#))
- 99. WEEE Directive ([download](#))

Technical data

Class group: Installation bus systems

Class: Energy management for bus system

Bus system KNX: No

Bus system KNX-RF (Radio Frequency): No

Bus system radio frequency: No

Bus system LON: No

Bus system Powernet: No

Other bus systems: Other

Radio frequency bidirectional: No

Model: Other

Connection type: Direct

Reactive power: No

Approved according to PTB: No

S0 impulse interface: None

Tariff switch: No

Min. depth of built-in installation box: 53,00 mm

Packaging



8007352487918

Qtà 1 NR

Dim 14.2x6.7x5.9
[cm]

Weight 122.2 [g]

You may also be interested in



01457 - Toroidal current
sensor 7.5mm hole

01458 - Toroidal current
sensor 19mm hole

Legal

Vimar reserves the right to change at any time and without notice the characteristics of the products reported. Installation should be carried out by qualified staff in compliance with the current regulations regarding the installation of electrical equipment in the country where the products are installed. For the terms of use of the information on the product info sheet see [Conditions of Use](#).