



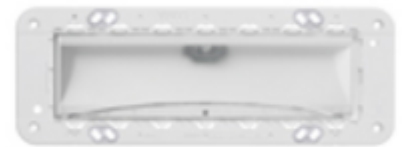
EIKON: LED emergency lamp 120V Eikon Evo 7M

02661.120

Wiring devices / Traditional wiring devices / EIKON / Devices

LED emergency lamp 120V Eikon Evo 7M

Emergency lighting device with high-efficiency LED, supply voltage 120 V~ 50-60 Hz, rechargeable Ni-Cd battery, built-in mounting frame for 6/7-module flush mounting boxes. To complete with Eikon Evo cover plate



Product Status

2 - Will be discontinued

Minimum order quantity

1 NR

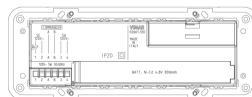
Sheets, Manuals, Documentation

- [FI - Foglio istruzioni ZIS_49400440B0 \(977 kb\)](#)

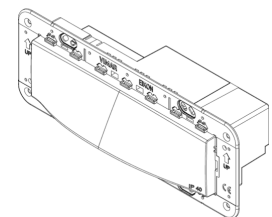
Drawings



Space view



Backside view



3D View

Technical data

- **Class group:** Luminaires
- **Class:** Emergency luminaire
- **Monitoring equipment:** None
- **With remote switch connection:** Yes
- **Power supply system:** Peripheral (individual battery)
- **Battery quality:** NiCd
- **Lamp type:** LED not exchangeable
- **With light source:** Yes
- **Housing colour:** White
- **Voltage type:** AC
- **Nominal voltage:** 120,00 - 120,01 V
- **Degree of protection (IP):** IP40
- **Protection class:** II
- **Max. system power:** 5,00 W
- **Rated luminous flux according to IEC 62722-2-1:** 75
- **Width:** 206,00 mm
- **Height/depth:** 70,60 mm
- **Length:** 73,00 mm
- **Built-in width:** 197,00 mm
- **Built-in height/depth:** 43,00 mm

Certifications

- 00. CE Marking - EU
- 37. Marking - Morocco
- 43. UKCA mark - Great Britain
- 99. WEEE Directive ([download](#))

Packaging



Code 8007352424166
Quantity 1 NR
Dim. 22.5x9.7x10 [cm]
Weight 396.6 [g]

Legal

Vimar reserves the right to change at any time and without notice the characteristics of the products reported. Installation should be carried out by qualified staff in compliance with the current regulations regarding the installation of electrical equipment in the country where the products are installed. For the terms of use of the information on the product info sheet see [Conditions of Use](#).