



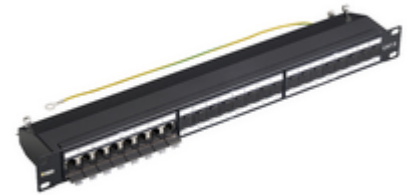
## Surface mounting components: Patch panel - 24 RJ45 Cat6 FTP conn.1u

### 03024.7

System infrastructure / Netsafe structured wiring / Surface mounting components / Carpentry

### Patch panel - 24 RJ45 Cat6 FTP conn.1u

19 in patch panel with 24 RJ45 Cat. 6 connectors, shielded, T568A/B universal wiring, 8-contact, 110 type insulation-piercing terminals - 1 rack unit



### Product Status

3 - Active

### Minimum order quantity

1 NR

### Sheets, Manuals, Documentation

- [Multilanguage instructions sheet \(1019 kb\)](#)

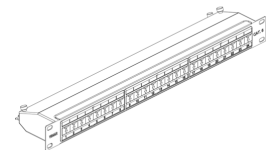
### Drawings



Space view



Backside view



3D View

## Technical data

- **Class group:** Data and telecommunication
- **Class:** Patch panel copper (twisted pair)
- **Number of buses/couplings:** 24
- **Suitable for number of connectors:** 24
- **Type of connector:** RJ45 8(8)
- **Screened:** Yes
- **Category:** 6
- **Connection type:** 110
- **Number of height units:** 1
- **Colour:** Other
- **RAL-number:** 0
- **Mounting method:** 482.6 mm (19 inch) mounting
- **Height:** 44,00 mm
- **Width:** 482,60 mm
- **Depth:** 104,80 mm

## Certifications

- 00. CE Marking - EU
- 43. UKCA mark - Great Britain
- 99. WEEE Directive ([download](#))

## Packaging



**Code** 8007352469112  
**Quantity** 1 NR  
**Dim.** 53.3x15.2x5.5 [cm]  
**Weight** 1,656.4 [g]

## Legal

Vimar reserves the right to change at any time and without notice the characteristics of the products reported. Installation should be carried out by qualified staff in compliance with the current regulations regarding the installation of electrical equipment in the country where the products are installed. For the terms of use of the information on the product info sheet see [Conditions of Use](#).