



Surface mounting components: Mono 9/125 LC optic fibre adapter

03100.LC

System infrastructure / Netsafe structured wiring / Surface mounting components / FTTH

Mono 9/125 LC optic fibre adapter

LC single-mode adapter, 9/125 μm , for 03124.SC.E patch panels

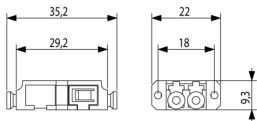
Product Status

3 - Active

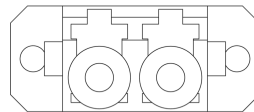
Minimum order quantity

6 NR

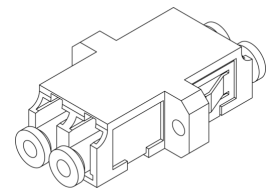
Drawings



Space view



Backside view



3D View



Technical data

- **Class group:** Installation, isolation and connection material
- **Class:** Cable end sleeve
- **Construction type:** Standard
- **Sleeve length:** 35,20 mm
- **Insulated:** Yes
- **Material insulation:** Other
- **Halogen free:** Yes
- **Colour:** Other
- **Material:** Other
- **Surface protection:** Other
- **For cables resistant to short circuit:** No
- **With identification flag:** No
- **Reel/roll packaging:** No

Packaging



Code 8007352561335
Quantity 1 NR
Dim. 3.5x2.2x0.9 [cm]
Weight 4.52 [g]

Code 8007352561342
Quantity 6 NR
Dim. 12x10x2 [cm]
Weight 27.1 [g]

Code 8007352561359
Quantity 60 NR
Dim. 19x14.3x9.5 [cm]
Weight 340.9 [g]

Legal

Vimar reserves the right to change at any time and without notice the characteristics of the products reported. Installation should be carried out by qualified staff in compliance with the current regulations regarding the installation of electrical equipment in the country where the products are installed. For the terms of use of the information on the product info sheet see [Conditions of Use](#).