



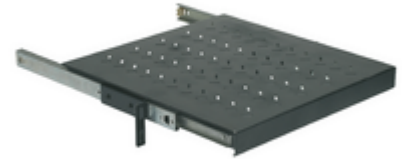
Surface mounting components: Extractable shelf 2u 450mm depth

03204.2U

System infrastructure / Netsafe structured wiring / Surface mounting components / Carpentry

Extractable shelf 2u 450mm depth

Removable organizer tray, 450 mm depth - 2 rack units



Product Status

3 - Active

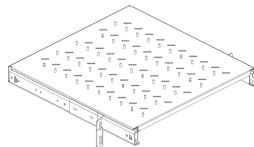
Minimum order quantity

1 NR

Drawings



Space view



3D View

Technical data

- **Class group:** Cabinet enclosures
- **Class:** Electronic enclosure
- **Width:** 490 mm
- **Height:** 89,40 mm
- **Depth:** 459,50 mm
- **Material:** Other
- **Surface finishing:** Lacquered
- **Colour:** Grey
- **RAL-number:** 0
- **With ventilation slots:** No

Packaging



Code 8007352276734
Quantity 1 NR
Dim. 49.8x52.8x10.8 [cm]
Weight 5,979.33 [g]

Legal

Vimar reserves the right to change at any time and without notice the characteristics of the products reported. Installation should be carried out by qualified staff in compliance with the current regulations regarding the installation of electrical equipment in the country where the products are installed. For the terms of use of the information on the product info sheet see [Conditions of Use](#).