



## MASCOT: 1P 10AX 1-way switch white

**06200.B**

Wiring devices / Traditional wiring devices / MASCOT / Devices

### 1P 10AX 1-way switch white

1P 10 AX 250 V~ 1-way switch, wide button, white

#### Product Status

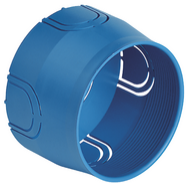
2 - Will be discontinued

#### Minimum order quantity

20 NR



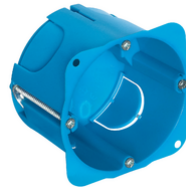
You may also be interested in



V71001 - Flush mounting box ø 60mm light blue



V71001.AU - Flush mounting box ø 60mm light black



V71701 - Round flush-mount box f/hollow wall blue

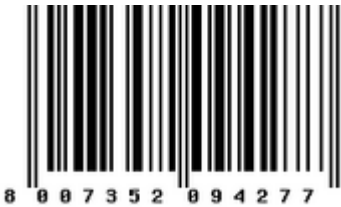
## Technical data

- **Class group:** Domestic switching devices
- **Class:** Installation switch
- **Wiring system:** Off switch 1-pole
- **Method of operation:** Rocker/button
- **Assembly arrangement:** Other
- **Number of modules (module system):** 2
- **Push button switch:** Yes
- **Number of rockers:** 1
- **Mounting method:** Flush-mounted
- **Type of fastening:** Mounting with claw
- **With mounting plate:** No
- **Material:** Plastic
- **Material quality:** Thermoplastic
- **Halogen free:** Yes
- **Surface protection:** Untreated
- **Surface finishing:** Matt
- **Colour:** White
- **RAL-number (similar):** 9003
- **Label space/information surface:** Yes
- **Illumination:** No
- **Function lighting:** Other
- **Type of lighting:** Other
- **Suitable for degree of protection (IP):** IP40
- **Nominal voltage:** 250 V
- **Rated current:** 10,00 A
- **Feedback-signal contact:** No
- **Connection type:** Screwed terminal
- **Washing machine switch:** No
- **Device width:** 80,00 mm
- **Device height:** 80,00 mm
- **Device depth:** 36,00 mm

## Certifications

- 00. CE Marking - EU
- 01. IMQ - Italy ([download](#))
- 37. Marking - Morocco
- 43. UKCA mark - Great Britain
- 96. Electrotechnical expert ([download](#))
- 99. WEEE Directive ([download](#))

## Packaging



**Code** 8007352094277  
**Quantity** 1 NR  
**Dim.** 8x8x3.6 [cm]  
**Weight** 53.93 [g]



**Code** 8007352094284  
**Quantity** 20 NR  
**Dim.** 29.5x24.8x8.7 [cm]  
**Weight** 1,292.2 [g]

## Legal

Vimar reserves the right to change at any time and without notice the characteristics of the products reported. Installation should be carried out by qualified staff in compliance with the current regulations regarding the installation of electrical equipment in the country where the products are installed. For the terms of use of the information on the product info sheet see [Conditions of Use](#).