



MASCOT: 1P 10AX 2-way switch+P17/11outlet white

06690.B

Wiring devices / Traditional wiring devices / MASCOT / Devices

1P 10AX 2-way switch+P17/11outlet white

1P 10 AX 250 V~ 2-way switch + 2P+E 16 A 250 V~ SICURY Bpresa socket outlet, Italian standard P17/11, white

Product Status

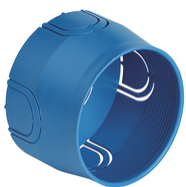
2 - Will be discontinued

Minimum order quantity

20 NR



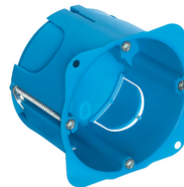
You may also be interested in



V71001 - Flush mounting box ø 60mm light blue



V71001.AU - Flush mounting box ø 60mm light black



V71701 - Round flush-mount box f/hollow wall blue

Technical data

- **Class group:** Domestic switching devices
- **Class:** Combination switch/wall socket outlet
- **Type of switch:** Two-way switch
- **Type of socket outlet:** Other
- **Number of socket outlets:** 1
- **Method of operation:** Rocker/button
- **Mounting direction:** Horizontal and vertical
- **Type of fastening:** Mounting with claw
- **With lighting:** No
- **Mounting method:** Flush-mounted
- **Material:** Plastic
- **Material quality:** Thermoplastic
- **Halogen free:** Yes
- **Surface protection:** Untreated
- **Surface finishing:** Matt
- **Colour:** White
- **RAL-number (similar):** 9003
- **Transparent:** No
- **Suitable for degree of protection (IP):** IP20
- **Nominal voltage:** 250 V
- **Nominal current socket outlet:** 16 A
- **Rated current:** 16 A
- **Over voltage protection:** No
- **Fault current protection:** No
- **Device width:** 80,00 mm
- **Device height:** 80,00 mm
- **Device depth:** 36 mm

Certifications

- 00. CE Marking - EU
- 01. IMQ - Italy ([download](#))
- 37. Marking - Morocco
- 96. Electrotechnical expert ([download](#))
- 99. WEEE Directive ([download](#))

Packaging



Code 8007352095489
Quantity 1 NR
Dim. 8x8x3.6 [cm]
Weight 74.87 [g]



Code 8007352098503
Quantity 20 NR
Dim. 31x24.8x8.7 [cm]
Weight 1,722.4 [g]

Legal

Vimar reserves the right to change at any time and without notice the characteristics of the products reported. Installation should be carried out by qualified staff in compliance with the current regulations regarding the installation of electrical equipment in the country where the products are installed. For the terms of use of the information on the product info sheet see [Conditions of Use](#).