



MASCOT: 1P 10AX 2-way switch+P30 outlet ivory

06697

Wiring devices / Traditional wiring devices / MASCOT / Devices

1P 10AX 2-way switch+P30 outlet ivory

1P 10 AX 250 V~ 2-way switch + 2P+E 16 A 250 V~ SICURY socket outlet, Italian standard P30 (lateral and central earth contacts), ivory

Product Status

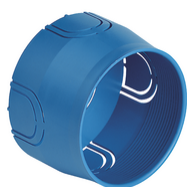
2 - Will be discontinued

Minimum order quantity

20 NR



You may also be interested in



V71001 - Flush mounting box ø 60mm light blue



V71001.AU - Flush mounting box ø 60mm light black



V71701 - Round flush-mount box f/hollow wall blue

Technical data

- **Class group:** Domestic switching devices
- **Class:** Combination switch/wall socket outlet
- **Type of switch:** Two-way switch
- **Type of socket outlet:** Other
- **Number of socket outlets:** 1
- **Method of operation:** Rocker/button
- **Mounting direction:** Horizontal and vertical
- **Type of fastening:** Mounting with claw
- **With lighting:** No
- **Mounting method:** Flush-mounted
- **Material:** Plastic
- **Material quality:** Thermoplastic
- **Halogen free:** Yes
- **Surface protection:** Untreated
- **Surface finishing:** Matt
- **Colour:** White
- **RAL-number (similar):** 9001
- **Transparent:** No
- **Suitable for degree of protection (IP):** IP20
- **Nominal voltage:** 250 V
- **Nominal current socket outlet:** 16 A
- **Rated current:** 16 A
- **Over voltage protection:** No
- **Fault current protection:** No
- **Device width:** 80,00 mm
- **Device height:** 80,00 mm
- **Device depth:** 36 mm

Certifications

- 00. CE Marking - EU
- 01. IMQ - Italy ([download](#))
- 37. Marking - Morocco
- 96. Electrotechnical expert ([download](#))
- 99. WEEE Directive ([download](#))

Packaging

	
Code 8007352040014	Code 8007352012752
Quantity 1 NR	Quantity 20 NR
Dim. 8x8x3.6 [cm]	Dim. 35.5x24.8x8.7 [cm]
Weight 88.67 [g]	Weight 2,006.47 [g]

Legal

Vimar reserves the right to change at any time and without notice the characteristics of the products reported. Installation should be carried out by qualified staff in compliance with the current regulations regarding the installation of electrical equipment in the country where the products are installed. For the terms of use of the information on the product info sheet see [Conditions of Use](#).