



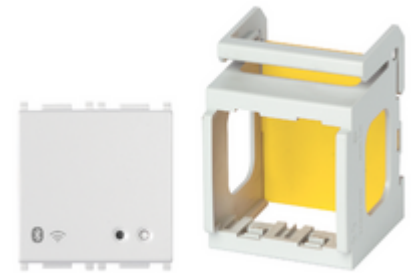
PLANA: Gateway 2M DIN rail white

OK14597.01

Wiring devices / View Wireless wiring devices / PLANA / Devices

Gateway 2M DIN rail white

IoT Bluetooth Wi-Fi Gateway for integration, configuration, supervision of View Wireless, via Cloud and App for smartphone, Tablet, 100-240 V 50/60 Hz power supply, installation on DIN rail (60715 TH35); occupies 2 modules size 17.5 mm



Product Status

3 - Active

Minimum order quantity

1 NR

Technical data

- **Class group:** Installation bus systems
- **Class:** System interface/media gateway for bus system
- **Bus system KNX:** No
- **Bus system KNX-RF (Radio Frequent):** No
- **Bus system radio frequent:** Yes
- **Bus system LON:** No
- **Bus system Powernet:** No
- **Other bus systems:** Other
- **Radio frequent bidirectional:** Yes
- **Model:** Bluetooth interface
- **Mounting method:** DRA (DIN-rail adapter)
- **Width in number of modular spacings:** 2
- **Demounting protection:** No
- **With LED indication:** Yes
- **Updateable:** Yes
- **Protocol:** Other
- **Provider dependent:** No
- **Visualization:** No
- **Web-Server:** Yes
- **Radio interface:** Yes
- **IR interface:** No

Certifications

- 00. CE Marking - EU ([download](#))
- 01. IMQ - Italy ([download](#))
- 29. QCERT - Colombia
- 37. Marking - Morocco
- 40. Bluetooth technology
- 41. Wi-Fi CERTIFIED
- 43. UKCA mark - Great Britain
- 99. WEEE Directive ([download](#))

Packaging



Code 8007352668218
Quantity 1 NR
Dim. 11.7x10.8x7.1 [cm]
Weight 119.2 [g]

Legal

Vimar reserves the right to change at any time and without notice the characteristics of the products reported. Installation should be carried out by qualified staff in compliance with the current regulations regarding the installation of electrical equipment in the country where the products are installed. For the terms of use of the information on the product info sheet see [Conditions of Use](#).