



ARKÉ: Zigbee2-way switch kit ArkéClassic black

OK19592.02

Wiring devices / View Wireless wiring devices / ARKÉ / Devices

Zigbee2-way switch kit ArkéClassic black

View Wireless connected 2-way switch kit with: 1 19592.0 2-way switch mechanism, 1 19022 interchangeable 2-module button grey, 1 19607 2-module British standard mounting frame, 1 19603 2-module mounting frame without screws, 1 19642.71 2-module Arké Classic cover plate black

- The smart switch allows to control lamps, or other kind of loads, either using a voice command or an app for smartphone/tablet or pressing the push button
- The smart switch can be controlled through a wireless connection by a Zigbee 3.0 smart home hub, such as Amazon Echo Plus, Echo Show or Echo Studio
- Amazon Alexa voice assistant is able to discover easily the smart switch and add it to the list of its own devices
- The smart switch can be installed in existing electrical systems with wired multi-way and two-way switches
- The smart switch works in the range of 100-240V 50/60Hz and the relay output is suitable for incandescent lamps up to 500W, LED lamps up to 100W, electronic transformers up to 250VA, fluorescent lamps up to 120W
- The timed switch-off and the power-on duration can be configured using the on-board push button
- The smart switch has a wired input that allows other traditional push buttons to control the smart switch
- The smart switch performs the automatic opening of the relay for thermal protection
- The smart switch must be powered with the same phase (L) and neutral (N) that power the load. In installation with wired multi-way and two-way switches, the smart switch should be always powered, therefore it should be installed instead of the wired two-way switch furthest from the load
- The smart switch is provided with two frames for French/German and British international standards
- For flush-mounting installation, it needs at least 5 cm deep backplate
- Compatible with SmartThings hub



Product Status

3 - Active

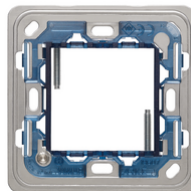
Kit components



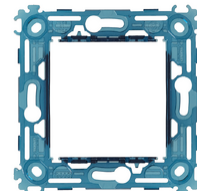
19592.0 - 2-way switch IoT connected mechanism



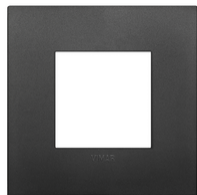
19022 - Button 2M grey



19607 - Frame 2M BS



19603 - Frame 2M without screws 71mm

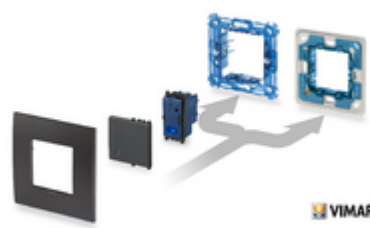
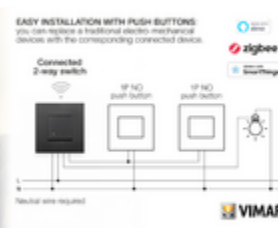
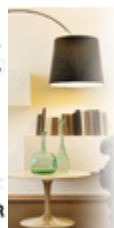
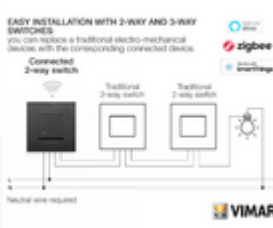


19642.71 - Classic plate 2M technopolymer black

Sheets, Manuals, Documentation

- [Manuale app View Wireless \(16695 kb\)](#)
- [Manuel appli View Wireless \(36896 kb\)](#)
- [Manual app View Wireless \(36835 kb\)](#)
- [Manual View Wireless app \(36774 kb\)](#)
- [Εγχειρίδιο τεχνικού εγκατάστασης \(37151 kb\)](#)
- [Installationsanleitung View Wireless \(36685 kb\)](#)

Gallery



Technical data

- **Class group:** Domestic switching devices
- **Class:** Installation switch
- **Wiring system:** Two-way switch
- **Method of operation:** Rocker/button
- **Assembly arrangement:** Modular device for domestic switching devices
- **Number of modules (module system):** 1
- **Push button switch:** Yes
- **Number of rockers:** 1
- **Mounting method:** Flush-mounted
- **Type of fastening:** Engage (snap)
- **With mounting plate:** No
- **Material:** Plastic
- **Material quality:** Thermoplastic
- **Surface protection:** Untreated
- **Surface finishing:** Matt
- **Colour:** Grey
- **RAL-number (similar):** 7015
- **Label space/information surface:** Yes
- **Illumination:** Optional
- **Function lighting:** Illuminated (on)
- **Type of lighting:** LED not exchangeable
- **Connection type:** Screwed terminal
- **Washing machine switch:** No
- **Device width:** 22,20 mm
- **Device height:** 49,00 mm
- **Device depth:** 48,60 mm
- **Built-in depth:** 36,50 mm

Certifications

- 00. CE Marking - EU
- 46. UK PSTI compliance ([download](#))
- 99. WEEE Directive ([download](#))

Packaging



Code 8007352646698
Quantity 1 NR
Dim. 14.2x9.8x9.1 [cm]
Weight 176.2 [g]

Legal

Vimar reserves the right to change at any time and without notice the characteristics of the products reported. Installation should be carried out by qualified staff in compliance with the current regulations regarding the installation of electrical equipment in the country where the products are installed. For the terms of use of the information on the product info sheet see [Conditions of Use](#).