



IDEA: 2P+E 15A Australian SICURY-outlet grey

16262

Wiring devices / Traditional wiring devices / IDEA / Devices

2P+E 15A Australian SICURY-outlet grey

2P+E 15 A 250 V~ SICURY socket outlet, Australian standard, grey - 2 modules

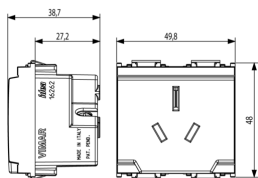
Product Status

3 - Active

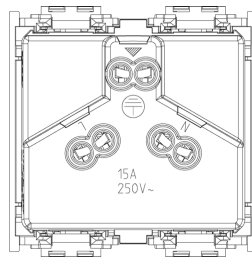
Minimum order quantity

20 NR

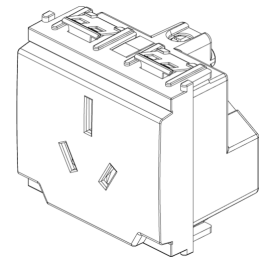
Drawings



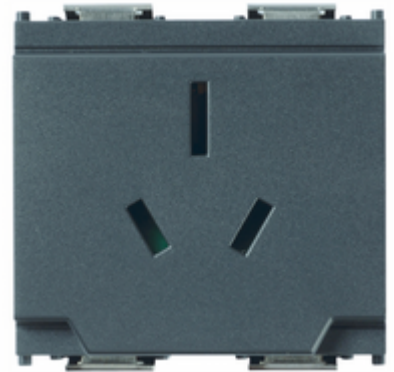
Space view



Backside view



3D View



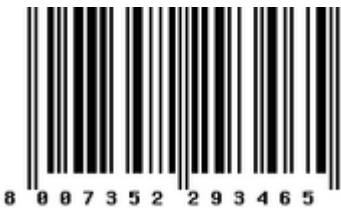
Technical data

- **Class group:** Domestic switching devices
- **Class:** Socket outlet
- **Model:** Australian standard AS/NZS 3112 (type I)
- **Number of units:** 1
- **Number of modules (module system):** 2
- **Number of socket outlets switchable:** 0
- **Imprint/indication:** None
- **Connection type:** Screwed terminal
- **With hinged lid:** No
- **With enhanced contact protection:** Yes
- **Label space/information surface:** Yes
- **Colour:** Grey
- **RAL-number (similar):** 7015
- **Metallic colour:** No
- **Transparent:** No
- **Lockable:** No
- **Eject-mechanism:** No
- **Insulated mounting:** No
- **With function lighting:** No
- **Over voltage protection:** No
- **Fault current protection:** No
- **Mounting method:** Flush-mounted
- **Material:** Plastic
- **Material quality:** Thermoplastic
- **Halogen free:** Yes
- **Surface protection:** Untreated
- **Surface finishing:** Matt
- **With loop through function:** No
- **With on/off switch:** No
- **Rotated central insert:** No
- **Nominal current:** 15 A
- **Nominal voltage:** 250 V
- **Frequency:** 50,00 - 60,00 HZ
- **Suitable for degree of protection (IP):** IP20
- **Impact strength:** Other
- **Device width:** 49,80 mm
- **Device height:** 50,10 mm
- **Device depth:** 38,70 mm

Certifications

- 00. CE Marking - EU
- 10. EAC Eurasian Customs Union
- 28. NSW - Australia ([download](#))
- 37. Marking - Morocco
- 96. Electrotechnical expert ([download](#))
- 99. WEEE Directive ([download](#))

Packaging



Code 8007352293465
Quantity 1 NR
Dim. 5.1x4.3x5.3 [cm]
Weight 47.53 [g]



Code 8007352293472
Quantity 20 NR
Dim. 26.9x11.6x9 [cm]
Weight 1,033.6 [g]

Legal

Vimar reserves the right to change at any time and without notice the characteristics of the products reported. Installation should be carried out by qualified staff in compliance with the current regulations regarding the installation of electrical equipment in the country where the products are installed. For the terms of use of the information on the product info sheet see [Conditions of Use](#).