



IDEA: TORCIA hand lamp 120V grey

16449

Wiring devices / Traditional wiring devices / IDEA / Devices

TORCIA hand lamp 120V grey

TORCIA, electronic hand lamp with high-efficiency LED, supply voltage 120 V~ 50-60 Hz, automatic emergency device, replaceable rechargeable Ni-MH battery, 2 hours of operating, \varnothing 4 mm pins, 19 mm distance between centres + charging socket outlet, grey - 2 modules

Product Status

2 - Will be discontinued

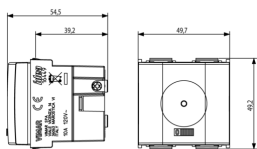
Minimum order quantity

10 NR

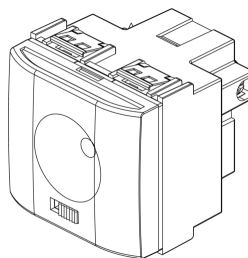
Sheets, Manuals, Documentation

- [Multilanguage instructions sheet \(484 kb\)](#)

Drawings



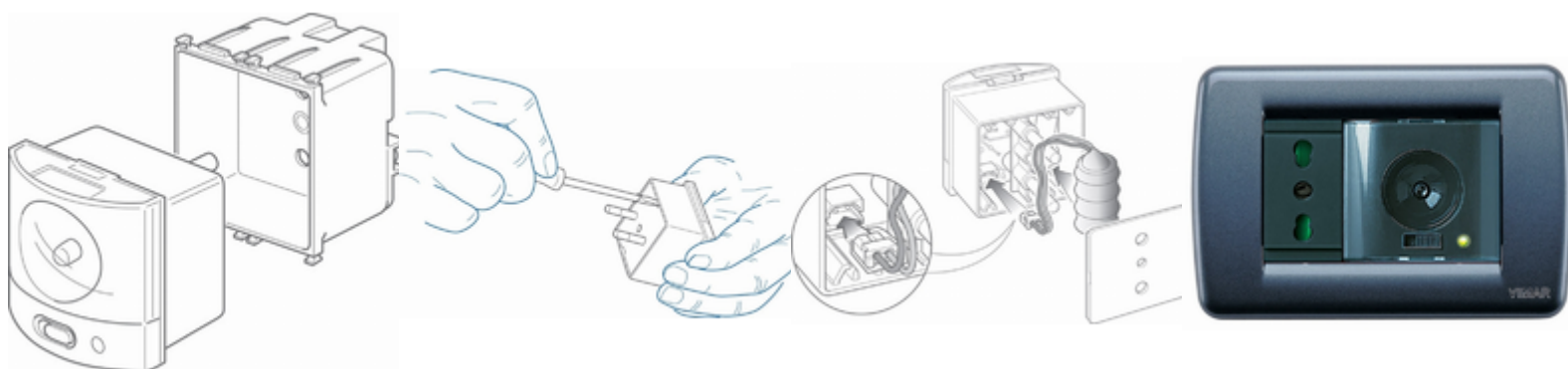
Space view



3D View



Gallery



Technical data

- **Class group:** Luminaires
- **Class:** Emergency luminaire
- **Mounting method:** Built-in
- **Monitoring equipment:** None
- **With remote switch connection:** No
- **Power supply system:** Peripheral (individual battery)
- **Battery quality:** NiMH
- **Lamp type:** LED not exchangeable
- **With light source:** Yes
- **Housing material:** Plastic
- **Housing colour:** Grey
- **Material cover:** Without cover
- **Voltage type:** AC
- **Nominal voltage:** 120,00 - 120,01 V
- **Degree of protection (IP):** IP40
- **Protection class:** II
- **Max. system power:** 1,00 W
- **Width:** 49,70 mm
- **Height/depth:** 50,10 mm
- **Built-in width:** 49,70 mm
- **Built-in height/depth:** 39,20 mm

Certifications

- 00. CE Marking - EU
- 10. EAC Eurasian Customs Union
- 37. Marking - Morocco
- 43. UKCA mark - Great Britain
- 96. Electrotechnical expert ([download](#))
- 99. WEEE Directive ([download](#))

Packaging



8 007352146587

Code 8007352146587
Quantity 1 NR
Dim. 6x5.4x5.3 [cm]
Weight 93.73 [g]



8 007352146594

Code 8007352146594
Quantity 10 NR
Dim. 28.1x13.1x6 [cm]
Weight 1,015.6 [g]

Legal

Vimar reserves the right to change at any time and without notice the characteristics of the products reported. Installation should be carried out by qualified staff in compliance with the current regulations regarding the installation of electrical equipment in the country where the products are installed. For the terms of use of the information on the product info sheet see [Conditions of Use](#).