



IDEA: TORCIA hand lamp 230V grey

16450

Wiring devices / Traditional wiring devices / IDEA / Devices

TORCIA hand lamp 230V grey

TORCIA, electronic hand lamp with high-efficiency LED, supply voltage 230 V~ 50-60 Hz, automatic emergency device, replaceable rechargeable Ni-MH battery, 2 hours of operating, \varnothing 4 mm pins, 19 mm distance between centres + charging socket outlet, grey - 2 modules

- Can be used as auxiliary lighting in the event of a power failure when inserted in the charger socket, while turning into a normal portable rechargeable hand lamp when removed
- Power supply: 230 V~ and 4-element replaceable rechargeable Ni-MH 4.8 V 80 mAh battery allowing the use of the device as an emergency light
- Slide switch to turn the TORCIA hand lamp on and off when it is used as a portable device or to enable or disable the auxiliary lighting function
- Battery charging time of 48 h and operating time after charging approximately 2 h



Product Status

3 - Active

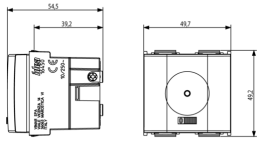
Minimum order quantity

10 NR

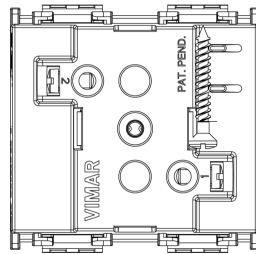
Sheets, Manuals, Documentation

- [Multilanguage instructions sheet \(484 kb\)](#)

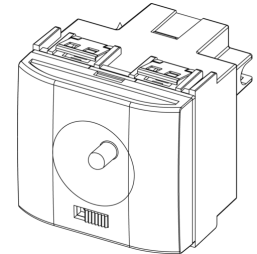
Drawings



Space view

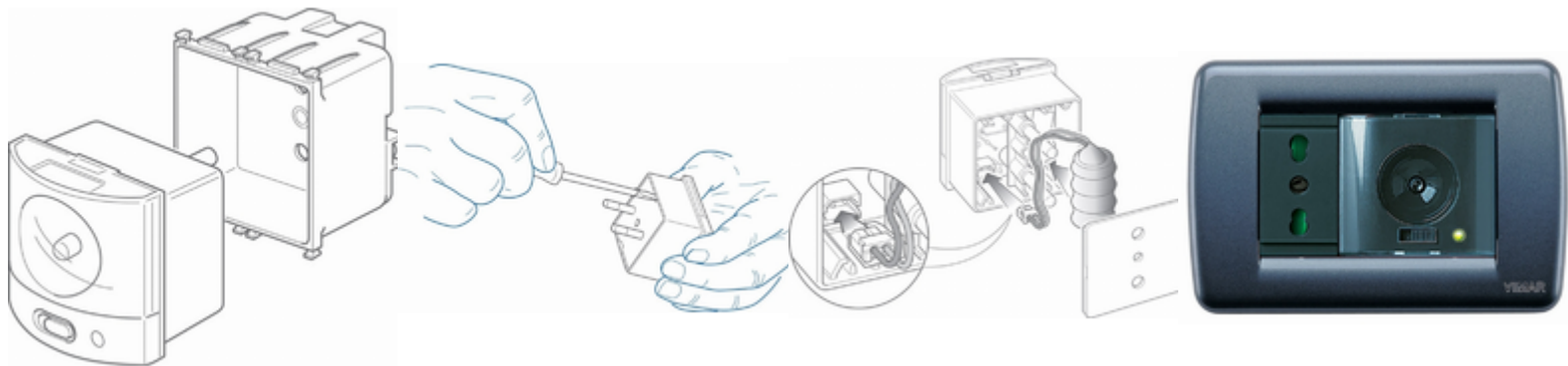


Backside view



3D View

Gallery



Technical data

- **Class group:** Luminaires
- **Class:** Emergency luminaire
- **Mounting method:** Built-in
- **Monitoring equipment:** None
- **With remote switch connection:** No
- **Power supply system:** Peripheral (individual battery)
- **Battery quality:** NiMH
- **Lamp type:** LED not exchangeable
- **With light source:** Yes
- **Housing material:** Plastic
- **Housing colour:** Grey
- **Material cover:** Without cover
- **Voltage type:** AC
- **Nominal voltage:** 230,00 - 230,01 V
- **Degree of protection (IP):** IP40
- **Protection class:** II
- **Max. system power:** 1,00 W
- **Width:** 49,70 mm
- **Height/depth:** 50,10 mm
- **Built-in width:** 49,70 mm
- **Built-in height/depth:** 39,20 mm

Certifications

- 00. CE Marking - EU
- 10. EAC Eurasian Customs Union
- 37. Marking - Morocco
- 43. UKCA mark - Great Britain
- 96. Electrotechnical expert ([download](#))
- 99. WEEE Directive ([download](#))

Packaging



8 007352 002098

Code 8007352002098
Quantity 1 NR
Dim. 6x5.4x5.3 [cm]
Weight 93.67 [g]



8 007352 002197

Code 8007352002197
Quantity 10 NR
Dim. 28.1x13.1x6 [cm]
Weight 1,013.07 [g]



8 007352 657182

Code 8007352657182
Quantity 120 NR
Dim. 38.5x29x30 [cm]
Weight 12,602.4 [g]



8 007352 587342

Code 8007352587342
Quantity 2,520 NR
Dim. 120x80x105 [cm]
Weight 271,650 [g]

Legal

Vimar reserves the right to change at any time and without notice the characteristics of the products reported. Installation should be carried out by qualified staff in compliance with the current regulations regarding the installation of electrical equipment in the country where the products are installed. For the terms of use of the information on the product info sheet see [Conditions of Use](#).