



## Switchboards: Frame 2M for DIN rail

**16727**

System infrastructure / Enclosures and control units / Switchboards / Shared accessories

### Frame 2M for DIN rail

2-module frame for DIN (60715 TH35) rail installation, occupies 2 17,5 mm modules, RAL 7035 grey

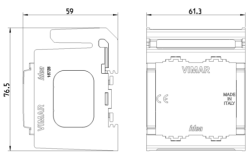
### Product Status

3 - Active

### Minimum order quantity

20 NR

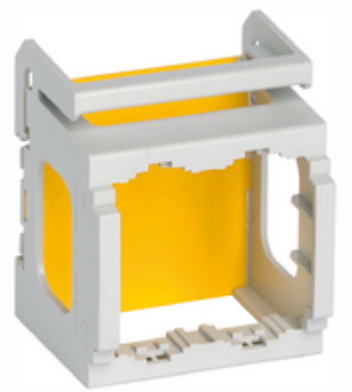
## Drawings



Space view



Backside view



3D View

## Technical data

- **Class group:** Domestic switching devices
- **Class:** Holder for modular domestic switching devices
- **Model:** Flush-mounted
- **Mounting method:** Snap mounting
- **Mounting method of the module inserts:** Back side
- **Mounting direction:** Horizontal and vertical
- **Number of modules horizontal (module system):** 2
- **Number of modules vertical (module system):** 1
- **With built-in installation box:** No
- **With screws:** No
- **Suitable for mounting in round junction box 60 mm:** No
- **Flush-mounted installation:** No
- **Suitable for subfloor installation duct box:** No
- **Suitable for wall duct:** No
- **Suitable for mounting on DIN-rail 35 mm:** Yes
- **Material:** Plastic
- **Material quality:** Thermoplastic

## Certifications

- 00. CE Marking - EU
- 01. IMQ - Italy ([download](#))
- 43. UKCA mark - Great Britain
- 96. Electrotechnical expert ([download](#))

## Packaging



**Code** 8007352133402  
**Quantity** 1 NR  
**Dim.** 7.7x6.1x5.9 [cm]  
**Weight** 28.4 [g]

**Code** 8007352133419  
**Quantity** 20 NR  
**Dim.** 35.5x24.8x8.7 [cm]  
**Weight** 728.13 [g]

## Legal

Vimar reserves the right to change at any time and without notice the characteristics of the products reported. Installation should be carried out by qualified staff in compliance with the current regulations regarding the installation of electrical equipment in the country where the products are installed. For the terms of use of the information on the product info sheet see [Conditions of Use](#).