



## IDEA: Rondò plate 1-2M wood cherry

**17093.53**

Wiring devices / Traditional wiring devices / IDEA / Cover plates

### Rondò plate 1-2M wood cherry

1-module or 2-reduced-module Rondò cover plate, solid wood, cherrywood

### Product Status

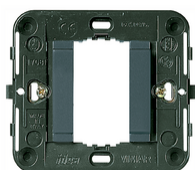
2 - Will be discontinued

### Minimum order quantity

1 NR



You may also be interested in



17080 - Frame 1M smooth  
front+claws grey



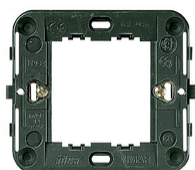
17080.B - Frame 1M smooth  
front+claws white



17086 - Frame 1M smooth  
no/screws ø60/56x56mm g



17086.B - Frame 1M smooth  
no/screws ø60/56x56mm w



17082 - Frame  
2reducedM+claws for  
ø60mm



17087 - Frame 2red.M  
no/screws ø60/56x56mm

# Technical data

- **Class group:** Domestic switching devices
- **Class:** Cover frame for domestic switching devices
- **Number of units:** 2
- **Mounting direction:** Horizontal and vertical
- **Number of units horizontal:** 2
- **Number of units vertical:** 1
- **Number of modules horizontal (module system):** 2
- **Number of modules vertical (module system):** 1
- **With mounting grid:** Yes
- **Suitable for subfloor installation duct box:** Yes
- **Suitable for wall duct:** Yes
- **Suitable for built-in installation:** Yes
- **Label space/information surface:** Yes
- **Material:** Wood
- **Material quality:** Other
- **Halogen free:** Yes
- **Surface protection:** Untreated
- **Surface finishing:** Matt
- **Colour:** Wood
- **RAL-number (similar):** 8003
- **Transparent:** No
- **With hinged lid:** No
- **Degree of protection (IP):** IP00
- **Type of fastening:** Clamp mounting
- **Width:** 91,00 mm
- **Height:** 80,00 mm
- **Depth:** 9,00 mm
- **Built-in width:** 91,00 mm
- **Built-in height:** 80,00 mm
- **Diameter bore hole (opening):** 0 mm

# Certifications

- 00. CE Marking - EU
- 01. IMQ - Italy ([download](#))

# Packaging



<b>Code</b>	8007352104570	<b>Code</b>	8007352104587
<b>Quantity</b>	1 NR	<b>Quantity</b>	10 NR
<b>Dim.</b>	8.5x9.1x1.1 [cm]	<b>Dim.</b>	9.9x12.4x9.6 [cm]
<b>Weight</b>	19.07 [g]	<b>Weight</b>	243.47 [g]

# Legal

Vimar reserves the right to change at any time and without notice the characteristics of the products reported. Installation should be carried out by qualified staff in compliance with the current regulations regarding the installation of electrical equipment in the country where the products are installed. For the terms of use of the information on the product info sheet see [Conditions of Use](#).