



IDEA: Rondò plate 1-2M wood walnut

17093.55

Wiring devices / Traditional wiring devices / IDEA / Cover plates

Rondò plate 1-2M wood walnut

1-module or 2-reduced-module Rondò cover plate, solid wood, walnut

Product Status

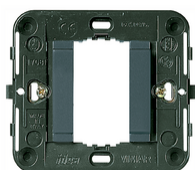
2 - Will be discontinued

Minimum order quantity

1 NR



You may also be interested in



17080 - Frame 1M smooth
front+claws grey



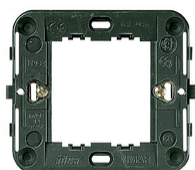
17080.B - Frame 1M smooth
front+claws white



17086 - Frame 1M smooth
no/screws ø60/56x56mm g



17086.B - Frame 1M smooth
no/screws ø60/56x56mm w



17082 - Frame
2reducedM+claws for
ø60mm



17087 - Frame 2red.M
no/screws ø60/56x56mm

Technical data

- **Class group:** Domestic switching devices
- **Class:** Cover frame for domestic switching devices
- **Number of units:** 2
- **Mounting direction:** Horizontal and vertical
- **Number of units horizontal:** 2
- **Number of units vertical:** 1
- **Number of modules horizontal (module system):** 2
- **Number of modules vertical (module system):** 1
- **With mounting grid:** Yes
- **Suitable for subfloor installation duct box:** Yes
- **Suitable for wall duct:** Yes
- **Suitable for built-in installation:** Yes
- **Label space/information surface:** Yes
- **Material:** Wood
- **Material quality:** Other
- **Halogen free:** Yes
- **Surface protection:** Untreated
- **Surface finishing:** Matt
- **Colour:** Wood
- **RAL-number (similar):** 8025
- **Transparent:** No
- **With hinged lid:** No
- **Degree of protection (IP):** IP00
- **Type of fastening:** Clamp mounting
- **Width:** 91,00 mm
- **Height:** 80,00 mm
- **Depth:** 9,00 mm
- **Built-in width:** 91,00 mm
- **Built-in height:** 80,00 mm
- **Diameter bore hole (opening):** 0 mm

Certifications

- 00. CE Marking - EU
- 01. IMQ - Italy ([download](#))

Packaging



Code	8007352104594	Code	8007352104600
Quantity	1 NR	Quantity	10 NR
Dim.	8.5x9.1x1.1 [cm]	Dim.	9.9x12.4x9.6 [cm]
Weight	21.67 [g]	Weight	270.53 [g]

Legal

Vimar reserves the right to change at any time and without notice the characteristics of the products reported. Installation should be carried out by qualified staff in compliance with the current regulations regarding the installation of electrical equipment in the country where the products are installed. For the terms of use of the information on the product info sheet see [Conditions of Use](#).