



ARKÉ: Classic plate 4M Reflex ice TL

19654.B66

Wiring devices / Traditional wiring devices / ARKÉ / Cover plates

Classic plate 4M Reflex ice TL

4-module Classic cover plate, technopolymer, Reflex ice total look, white frame

Product Status

3 - Active

Minimum order quantity

10 NR



You may also be interested in

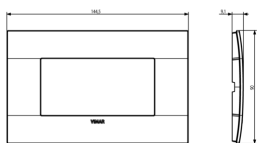


19614 - Frame 4M +screws

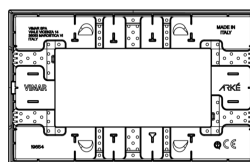
Video

- [Arké lives in your time](#)

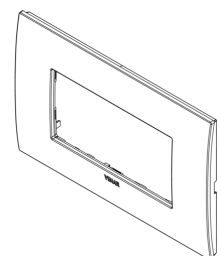
Drawings



Space view



Backside view



3D View

Gallery



Technical data

- **Class group:** Domestic switching devices
- **Class:** Cover frame for domestic switching devices
- **Number of units:** 4
- **Mounting direction:** Horizontal and vertical
- **Number of units horizontal:** 4
- **Number of units vertical:** 1
- **Number of modules horizontal (module system):** 4
- **Number of modules vertical (module system):** 1
- **With mounting grid:** Yes
- **Suitable for subfloor installation duct box:** Yes
- **Suitable for wall duct:** Yes
- **Suitable for built-in installation:** Yes
- **Label space/information surface:** Yes
- **Material:** Plastic
- **Material quality:** Plastic glass
- **Halogen free:** Yes
- **Surface protection:** Untreated
- **Surface finishing:** Glossy
- **Colour:** White
- **RAL-number (similar):** 9016
- **Transparent:** No
- **With hinged lid:** No
- **Degree of protection (IP):** IP00
- **Type of fastening:** Clamp mounting
- **Width:** 90,00 mm
- **Height:** 90,00 mm
- **Depth:** 8,60 mm
- **Built-in width:** 90,00 mm
- **Built-in height:** 90,00 mm
- **Diameter bore hole (opening):** 0 mm

Certifications

- 00. CE Marking - EU
- 01. IMQ - Italy ([download](#))
- 29. QCERT - Colombia
- 43. UKCA mark - Great Britain

Packaging



Code 8007352555501
Quantity 1 NR
Dim. 14.5x9x0.9 [cm]
Weight 43 [g]

Code 8007352555518
Quantity 10 NR
Dim. 17.1x9.8x9.9 [cm]
Weight 442 [g]

Code 8007352641167
Quantity 360 NR
Dim. 59x34.5x32.5 [cm]
Weight 16,662 [g]

Legal

Vimar reserves the right to change at any time and without notice the characteristics of the products reported. Installation should be carried out by qualified staff in compliance with the current regulations regarding the installation of electrical equipment in the country where the products are installed. For the terms of use of the information on the product info sheet see [Conditions of Use](#).