



## EIKON: Classic plate 2MBS Wood Italian walnut

**20647.C35**

Wiring devices / Traditional wiring devices / EIKON / Cover plates

### Classic plate 2MBS Wood Italian walnut

2-module Classic cover plate for British standard, solid wood and chromed frame, Italian walnut

#### Product Status

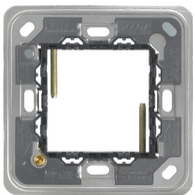
2 - Will be discontinued

#### Minimum order quantity

1 NR

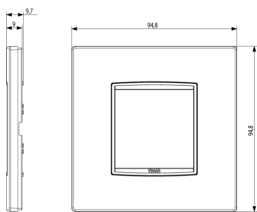


You may also be interested in

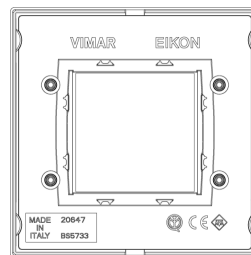


20607 - Frame 2M BS

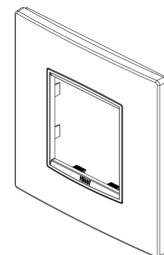
## Drawings



Space view



Backside view



3D View

## Technical data

- **Class group:** Domestic switching devices
- **Class:** Cover frame for domestic switching devices
- **Number of units:** 2
- **Mounting direction:** Horizontal and vertical
- **Number of units horizontal:** 2
- **Number of units vertical:** 1
- **Number of modules horizontal (module system):** 2
- **Number of modules vertical (module system):** 1
- **With mounting grid:** Yes
- **Suitable for subfloor installation duct box:** Yes
- **Suitable for wall duct:** Yes
- **Suitable for built-in installation:** Yes
- **Label space/information surface:** Yes
- **Material:** Wood
- **Material quality:** Other
- **Halogen free:** Yes
- **Surface protection:** Untreated
- **Surface finishing:** Matt
- **Colour:** Wood
- **RAL-number (similar):** 8025
- **Transparent:** No
- **With hinged lid:** No
- **Degree of protection (IP):** IP00
- **Type of fastening:** Clamp mounting
- **Width:** 94,80 mm
- **Height:** 94,80 mm
- **Depth:** 9,70 mm
- **Built-in width:** 94,80 mm
- **Built-in height:** 94,80 mm
- **Diameter bore hole (opening):** 0 mm

## Certifications

- 08. ASTA - UK

## Packaging



**Code** 8007352477957  
**Quantity** 1 NR  
**Dim.** 9.7x9.7x1.7 [cm]  
**Weight** 61.2 [g]



**Code** 8007352477964  
**Quantity** 5 NR  
**Dim.** 10.3x9.4x10.5 [cm]  
**Weight** 344.8 [g]

## Legal

Vimar reserves the right to change at any time and without notice the characteristics of the products reported. Installation should be carried out by qualified staff in compliance with the current regulations regarding the installation of electrical equipment in the country where the products are installed. For the terms of use of the information on the product info sheet see [Conditions of Use](#).