



Connector block boxes: Table mounting box 4M grey

20784

System infrastructure / Enclosures and control units / Connector block boxes
/ Desktop

Table mounting box 4M grey

4-module table mounting box, grey. To complete with mounting frame and cover plate

Product Status

3 - Active

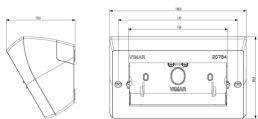
Minimum order quantity

4 NR

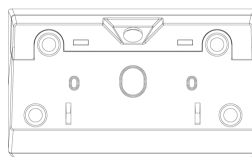
Sheets, Manuals, Documentation

- [Multilanguage instructions sheet \(724 kb\)](#)

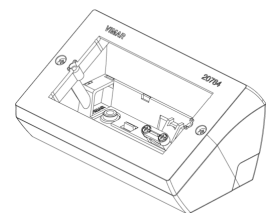
Drawings



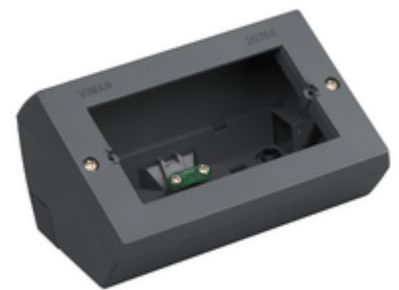
Space view



Backside view



3D View



Technical data

- **Class group:** Domestic switching devices
- **Class:** Surface mounted box for flush-mounted switching equipment
- **Assembly arrangement:** Other
- **Suitable for modular domestic switching devices:** Yes
- **Number of modules (module system):** 4
- **Number of units:** 4
- **Mounting direction:** Horizontal
- **Material:** Plastic
- **Material quality:** Other
- **Halogen free:** Yes
- **Surface protection:** Untreated
- **Surface finishing:** Matt
- **Colour:** Grey
- **RAL-number (similar):** 7024
- **Transparent:** No
- **With cover frame:** No
- **With duct entry:** No
- **With cable entry:** Yes
- **With screw gland entry:** No
- **Shock resistant:** Yes
- **Degree of protection (IP):** IP20
- **Device width:** 142,50 mm
- **Device height:** 80,00 mm
- **Device depth:** 67,60 mm

Certifications

- 01. IMQ - Italy ([download](#))
- 96. Electrotechnical expert ([download](#))

Packaging



Code 8007352265066
Quantity 1 NR
Dim. 14.8x8.9x7.5 [cm]
Weight 197.53 [g]

Code 8007352265073
Quantity 4 NR
Dim. 33.4x18.9x7.9 [cm]
Weight 928.07 [g]

Legal

Vimar reserves the right to change at any time and without notice the characteristics of the products reported. Installation should be carried out by qualified staff in compliance with the current regulations regarding the installation of electrical equipment in the country where the products are installed. For the terms of use of the information on the product info sheet see [Conditions of Use](#).