



LINEA: Anti-theft support 7M + screws

30617AE

Wiring devices / Traditional wiring devices / LINEA / Mounting frames

Anti-theft support 7M + screws

7-module anti-tamper mounting frame, with screws, for 6/7-module mounting boxes

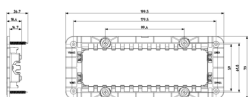
Product Status

3 - Active

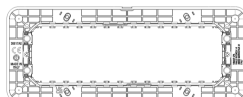
Minimum order quantity

10 NR

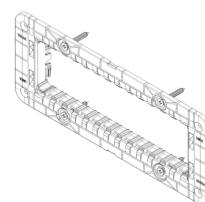
Drawings



Space view



Backside view



3D View

Technical data

- **Class group:** Domestic switching devices
- **Class:** Holder for modular domestic switching devices
- **Model:** Flush-mounted
- **Mounting method:** Mounting with screw
- **With nail:** No
- **Mounting method of the module inserts:** Front side
- **Mounting direction:** Horizontal and vertical
- **Number of modules horizontal (module system):** 7
- **Number of modules vertical (module system):** 0
- **With built-in installation box:** No
- **With screws:** No
- **Suitable for mounting in round junction box 60 mm:** No
- **Flush-mounted installation:** Yes
- **Suitable for subfloor installation duct box:** No
- **Suitable for wall duct:** No
- **Suitable for mounting on DIN-rail 35 mm:** No
- **Material:** Plastic
- **Material quality:** Thermoplastic
- **Surface protection:** Untreated

Certifications

- 00. CE Marking - EU
- 01. IMQ - Italy ([download](#))
- 43. UKCA mark - Great Britain
- 96. Electrotechnical expert ([download](#))

Packaging



Code 8007352729605
Quantity 1 NR
Dim. 20x7.9x2.6 [cm]
Weight 62.7 [g]

Code 8007352729612
Quantity 10 NR
Dim. 28.6x24.8x9.6 [cm]
Weight 627 [g]

Legal

Vimar reserves the right to change at any time and without notice the characteristics of the products reported. Installation should be carried out by qualified staff in compliance with the current regulations regarding the installation of electrical equipment in the country where the products are installed. For the terms of use of the information on the product info sheet see [Conditions of Use](#).