



## LINEA: Button 2M Canvas

### 31000.2C

Wiring devices / Traditional wiring devices / LINEA / Buttons

### Button 2M Canvas

Aligned 2-module interchangeable button, lightable, canvas

### Product Status

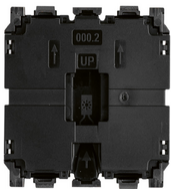
3 - Active

### Minimum order quantity

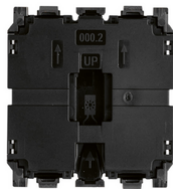
10 NR



You may also be interested in



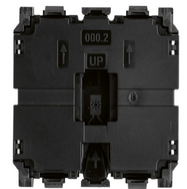
30000.2 - Axial 1P 10AX 1-way switch mechanism 2M



30004.2 - 1P 10AX 2M axial 2-way switch mechanism

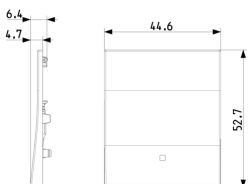


30008.2 - 1P NO 10A 2M axial button mechanism

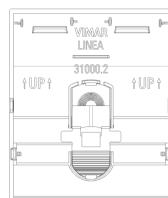


30012.2 - 1P 10AX 2M axial reversing switch mech.

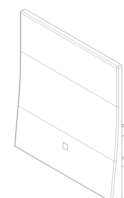
## Drawings



Space view



Backside view



3D View

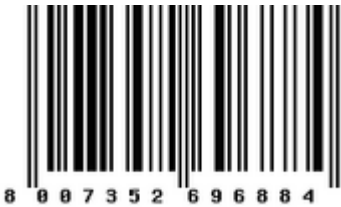
## Technical data

- **Class group:** Domestic switching devices
- **Class:** Control element/cover plate for domestic switching devices
- **Model:** One-part rocker
- **Imprint/indication:** None
- **Scannable symbol/barrier free:** No
- **Utilization:** Switch/push button
- **Suitable for touch sensor connector for bus system:** No
- **Type of fastening:** Clamp mounting
- **Monitoring window/light outlet:** Yes
- **Material:** Plastic
- **Material quality:** Thermoplastic
- **Halogen free:** Yes
- **Surface protection:** Untreated
- **Surface finishing:** Matt
- **Anti-bacterial treatment:** No
- **Colour:** Beige
- **RAL-number (similar):** 7032
- **With label area:** No
- **With exchangeable lens/symbol:** No
- **Suitable for degree of protection (IP):** IP40
- **Width:** 4.460,00 mm
- **Height:** 5.270,00 mm
- **Depth:** 800,00 mm

## Certifications

- 00. CE Marking - EU
- 01. IMQ - Italy ([download](#))
- 43. UKCA mark - Great Britain
- 96. Electrotechnical expert ([download](#))

## Packaging



**Code** 8007352696884  
**Quantity** 1 NR  
**Dim.** 10x7.5x0.8 [cm]  
**Weight** 6.9 [g]



**Code** 8007352696891  
**Quantity** 10 NR  
**Dim.** 11.2x9.2x9.8 [cm]  
**Weight** 134 [g]

## Legal

Vimar reserves the right to change at any time and without notice the characteristics of the products reported. Installation should be carried out by qualified staff in compliance with the current regulations regarding the installation of electrical equipment in the country where the products are installed. For the terms of use of the information on the product info sheet see [Conditions of Use](#).