



Video: Tab7S Up video entryphone 2F+ Wi-Fi whit

40517

ELVOX Door entry system / 2F/2F+ video door entry system / Video / Video indoor stations

Tab7S Up video entryphone 2F+ Wi-Fi whit

Surface mounting Tab 7S Up hands-free video entryphone for Due Fili Plus system, integrated Wi-Fi for call forwarding to smartphone with dedicated App, 7in touch screen colour LCD display, capacitive keyboard for video door entry functions and intercom calls, video voicemail, teleloop for hearing aids, possibility of scenarios recalling into View Wireless system bracket for fixing in round or rectangular mounting box, surface mounting or semi-flush mounting, white

- Connected thanks to integrated Wi-Fi
- With View App, more functions and improved control
- Multi-system and multi-user
- Also suitable for refurbishments
- With Teleloop, optical and acoustic signalling. Crystal-clear sound and visual feedback confirm the activation of the functions, facilitating use for the visually impaired or hearing aid wearers too
- Possibility of calling up scenarios from the VIEW Wireless connected wiring series from the video entryphone



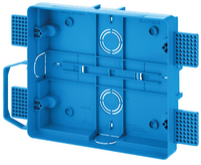
Product Status

3 - Active

Minimum order quantity

1 NR

You may also be interested in



40591 - Box for Tab7 Up video entryphone



40596 - Tab 7 Up desktop



K40517.E - Video kit 1-Fam.Tab 7S Up Wi-Fi +1300E



K40517G.01 - Video kit 1/2-Fam.Tab 7S Up Wi-Fi +41005



732I.E.100 - 2F+ LSZH cable 2x1 outer laying Eca 100m



732I.E.500 - 2F+ LSZH cable 2x1 ext. laying Eca 500m



732H.E.100 - 2F+ PVC cable 2x1 intern.laying Eca 100m



732H.E.500 - 2F+ PVC-cable internal laying Eca 500m



732I.C.100 - 2F+ cable 2x1 LSZH Cca 100m purple

Sheets, Manuals, Documentation

- [Multilanguage installer manual \(4519 kb\)](#)
- [Manuale app View Wireless \(15556 kb\)](#)
- [Manuel appli View Wireless \(37703 kb\)](#)
- [Manual app View Wireless \(37528 kb\)](#)
- [Manual View Wireless app \(37579 kb\)](#)
- [Εγχειρίδιο τεχνικού εγκατάστασης \(37781 kb\)](#)
- [Installationsanleitung View Wireless \(37508 kb\)](#)
- [Manual do utilizador \(25522 kb\)](#)
- [Manuale utente \(25597 kb\)](#)
- [Manuel de l'utilisateur \(25510 kb\)](#)
- [Manual de usuario \(25495 kb\)](#)
- [User Manual \(25619 kb\)](#)
- [Εγχειρίδιο χρήστη \(25625 kb\)](#)
- [Bedienungsanleitung \(25681 kb\)](#)
- [\(25423 kb\)](#)

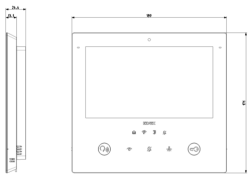
Product Software

- [FW_VideocitofonoTAB7SUP2F_WiFiVW_REL-01.06.0303_20230828.zip](#)

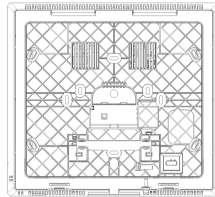
Video

- [Videoclip](#)
- [Wi-Fi configuration and smartphone](#)
- [Installation and configuration](#)
- [Functions and adjustments](#)
- [Integration into the View Wireless](#)

Drawings



Space view



Backside view



3D View

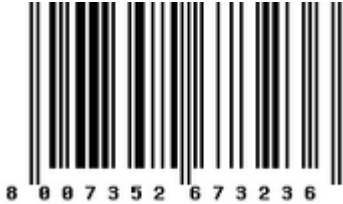
Technical data

- **Class group:** Communication technique
- **Class:** Intercom
- **Model:** Main station
- **Type of communication:** Full-duplex
- **Type of system:** Central
- **Single call function:** Yes
- **Group call function:** Yes
- **General call function:** No
- **Installation technique:** Bus system
- **Mounting method:** Wall-/desk type model
- **Degree of protection (IP):** Other

Certifications

- 00. CE Marking - EU ([download](#))
- 06. SUBTEL - Chile
- 32. FCC - USA
- 35. RCM - Australia
- 43. UKCA mark - Great Britain
- 92. RoHS UAE
- 99. WEEE Directive ([download](#))

Packaging



Code 8007352673229
Quantity 1 NR
Dim. 23x22x5 [cm]
Weight 760 [g]

Code 8007352673236
Quantity 9 NR
Dim. 35x33.5x24.5 [cm]
Weight 7,294 [g]

Legal

Vimar reserves the right to change at any time and without notice the characteristics of the products reported. Installation should be carried out by qualified staff in compliance with the current regulations regarding the installation of electrical equipment in the country where the products are installed. For the terms of use of the information on the product info sheet see [Conditions of Use](#).