



## Video: B/w s.-fam. Due Fili kit 13K1 +Petrarca

### 68IA/R

ELVOX Door entry system / 2F/2F+ video door entry system / Video / Video kits

### B/w s.-fam. Due Fili kit 13K1 +Petrarca

Due Fili black and white monitor kit for single-family system containing 1 x 13K1 wall- or flush-mounted anodized aluminium cover plate with 1 button, 1 x R131 additional button for adapting the entrance panel for a two-family kit, 1 x 68TU/K electronic unit, 1 x 6029 white wall-mounted monitor, 1 x 6218 white Petrarca wall-mounted interphone, 1 x 6145 fixing bracket, 1 x 692K power supply unit



### Product Status

2 - Will be discontinued

### Minimum order quantity

1 NR

### Kit components



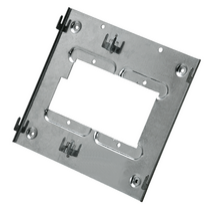
13K1 - 1-button a/v aluminium cover plate



R131 - External button for 1300 series panel



6029 - B/w Petrarca Due Fili monitor, white



6145 - Fix. bracket interphones & monitors

## Sheets, Manuals, Documentation

- [Multilanguage instructions sheet \(1135 kb\)](#)
- [Additional instruction sheet \(241 kb\)](#)
- [Installer manual \(30549 kb\)](#)
- [MU - Manuale Utente ZIS\\_S6I.600.901 \(1041 kb\)](#)

## Technical data

- **Class group:** Communication technique
- **Class:** Accessories/spare parts for door communication
- **Suitable for:** Indoor station
- **Material:** Other
- **Colour:** Other

## Certifications

- 00. CE Marking - EU
- 37. Marking - Morocco
- 99. WEEE Directive ([download](#))

## Packaging



**Code** 8013406217554  
**Quantity** 1 NR  
**Dim.** 51x29.5x10.5 [cm]  
**Weight** 3,057.4 [g]

## Legal

Vimar reserves the right to change at any time and without notice the characteristics of the products reported. Installation should be carried out by qualified staff in compliance with the current regulations regarding the installation of electrical equipment in the country where the products are installed. For the terms of use of the information on the product info sheet see [Conditions of Use](#).