



Spare parts: Motor ESM1

RA91

Safety / ELVOX Automations / Spare parts / Sliding

Motor ESM1

ESM1 motor unit, includes flange, gaskets, bearings, worm screw and screws for anchoring to the operator's die-cast base

Product Status

2 - Will be discontinued

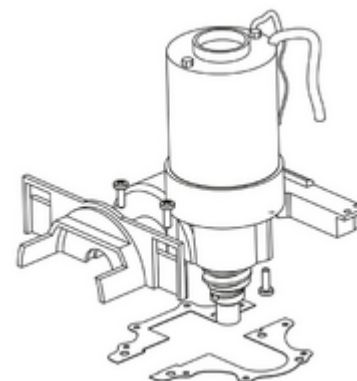
Minimum order quantity

1 NR

Technical data

- **Class group:** Gate operators, pumps and ventilators
- **Class:** Electric motor

- **Model:** Direct current motor
- **Rated voltage:** 12 V



Certifications

- 00. CE Marking - EU
- 43. UKCA mark - Great Britain
- 99. WEEE Directive ([download](#))

Packaging



Code 8013406273901
Quantity 1 NR
Dim. 26.8x21.4x18 [cm]
Weight 2,808 [g]

Legal

Vimar reserves the right to change at any time and without notice the characteristics of the products reported. Installation should be carried out by qualified staff in compliance with the current regulations regarding the installation of electrical equipment in the country where the products are installed. For the terms of use of the information on the product info sheet see [Conditions of Use](#).