



Switchboards: Frame 2M Eikon/Arké/Plana for DIN rail

V51922

System infrastructure / Enclosures and control units / Switchboards / Shared accessories

Frame 2M Eikon/Arké/Plana for DIN rail

2-module support for DIN (60715 TH35) rail for installation of Eikon, Arké and Plana devices, occupies 3 17,5 mm modules, RAL 7035 grey. Provided with isolating lining

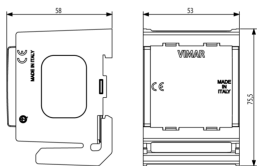
Product Status

3 - Active

Minimum order quantity

20 NR

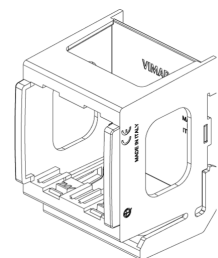
Drawings



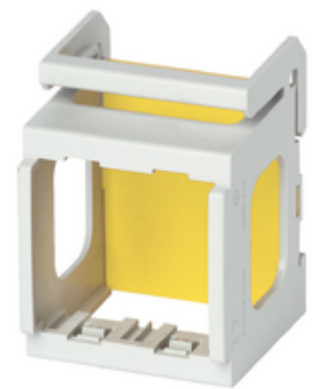
Space view



Backside view



3D View



Technical data

- **Class group:** Low-voltage industrial components
- **Class:** DIN-rail adapter
- **Type of fastening:** DIN rail (top hat rail) 35 mm
- **Type of DIN-rail adapter:** Straight
- **Material:** Plastic

Certifications

- 00. CE Marking - EU
- 01. IMQ - Italy ([download](#))
- 01. IMQ - Italy ([download](#))
- 01. IMQ - Italy ([download](#))
- 29. QCERT - Colombia
- 43. UKCA mark - Great Britain
- 96. Electrotechnical expert ([download](#))

Packaging



Code 8007352395909
Quantity 1 NR
Dim. 5.3x7.5x5.8 [cm]
Weight 25.4 [g]

Code 8007352395916
Quantity 20 NR
Dim. 29.5x24.8x8.7 [cm]
Weight 650.4 [g]

Legal

Vimar reserves the right to change at any time and without notice the characteristics of the products reported. Installation should be carried out by qualified staff in compliance with the current regulations regarding the installation of electrical equipment in the country where the products are installed. For the terms of use of the information on the product info sheet see [Conditions of Use](#).