



Switchboards: Flush consumer unit 8M Idea grey

V53008.G

System infrastructure / Enclosures and control units / Switchboards / Flush mounting

Flush consumer unit 8M Idea grey

Flush consumer unit with horizontally hinged transparent door, 8 modules, delivered with DIN (60715 TH35) rail, Idea grey

Product Status

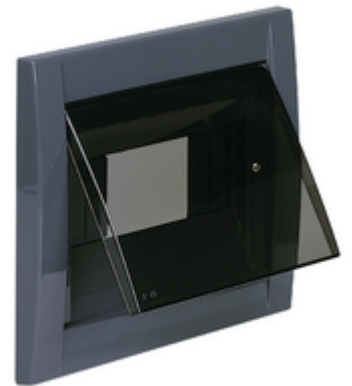
2 - Will be discontinued

Minimum order quantity

1 NR

Technical data

- **Class group:** Distribution boards
- **Class:** Small distribution board
- **Mounting method:** Flush-mounted
- **Number of rows:** 1
- **Width in number of modular spacings:** 8
- **Type of covering:** Door
- **Transparent cover/door:** Yes
- **With lock:** No
- **Housing material:** Plastic
- **DIN-rail:** Yes
- **With mounting plate:** No
- **Extension possible:** No
- **EMC-version:** No
- **Colour:** Grey
- **RAL-number:** 0
- **Degree of protection (IP):** IP40
- **Height:** 176,00 mm
- **Width:** 230,00 mm
- **Depth:** 18,00 mm



Packaging



Code 8007352081918
Quantity 1 NR
Dim. 28.4x18.4x7.5 [cm]
Weight 356.87 [g]

Code 8007352470811
Quantity 14 NR
Dim. 58x38.5x30 [cm]
Weight 5,746.18 [g]

Legal

Vimar reserves the right to change at any time and without notice the characteristics of the products reported. Installation should be carried out by qualified staff in compliance with the current regulations regarding the installation of electrical equipment in the country where the products are installed. For the terms of use of the information on the product info sheet see [Conditions of Use](#).