



Switchboards: Flush consumer unit 8M smokegrey

V53108

System infrastructure / Enclosures and control units / Switchboards / Flush mounting

Flush consumer unit 8M smokegrey

8-module flush mounting consumer unit, IP40, with DIN (60715 TH35) rail and smoked glass door

Product Status

3 - Active

Minimum order quantity

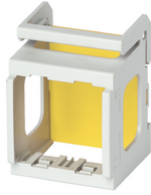
1 NR



You may also be interested in



V51921 - Frame 1M
Eikon/Arké/Plana for DIN rail



V51922 - Frame 2M
Eikon/Arké/Plana for DIN rail



V51923 - Frame 3M
Eikon/Arké/Plana for DIN rail



V53597 - Lock+key for
consumer unit



V53598 - Blank module 4M
DIN consumer unit



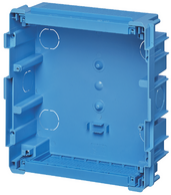
V53599 - Consumer unit
coverage



V53708 - Flush-mount box
f/hollow walls f/V53108



V53108.B - Flush consumer
unit 8M white



V53308 - Flush mounting
box for V53108

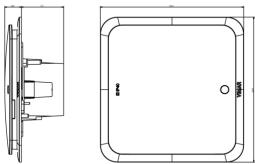
Sheets, Manuals, Documentation

- [Multilanguage instructions sheet \(2445 kb\)](#)

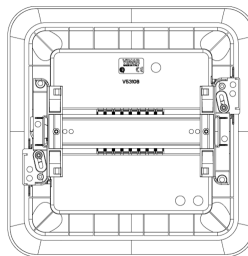
Video

- [Flush mounting consumer units](#)

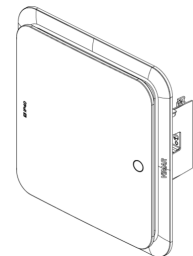
Drawings



Space view



Backside view



3D View

Technical data

- **Class group:** Distribution boards
- **Class:** Small distribution board
- **Mounting method:** Flush-mounted
- **Number of rows:** 1
- **Width in number of modular spacings:** 8
- **Type of covering:** Door
- **Cover model:** Closed
- **Transparent cover/door:** Yes
- **With lock:** Yes
- **Housing material:** Plastic
- **Built-in depth:** 75,70 mm
- **Inner depth:** 104,50 mm
- **DIN-rail:** Yes
- **With mounting plate:** No
- **Extension possible:** No
- **EMC-version:** No
- **Colour:** Grey
- **RAL-number:** 0
- **Degree of protection (IP):** IP40
- **Height:** 259,90 mm
- **Width:** 256,90 mm
- **Depth:** 105,50 mm

Certifications

- 00. CE Marking - EU
- 00. CE Marking - EU
- 01. IMQ - Italy ([download](#))
- 01. IMQ - Italy ([download](#))
- 96. Electrotechnical expert ([download](#))

Packaging



Code 8007352492196
Quantity 1 NR
Dim. 29x28x14 [cm]
Weight 861.1 [g]

Legal

Vimar reserves the right to change at any time and without notice the characteristics of the products reported. Installation should be carried out by qualified staff in compliance with the current regulations regarding the installation of electrical equipment in the country where the products are installed. For the terms of use of the information on the product info sheet see [Conditions of Use](#).