



Switchboards: Flush-mount box f/hollow walls f/V53136

V53736

System infrastructure / Enclosures and control units / Switchboards / Flush mounting

Flush-mount box f/hollow walls f/V53136

Flush mounting box for 36-module consumer unit (GW 650 °C) for hollow walls, light blue. Dimensions 316x588x80 mm



Product Status

3 - Active

Minimum order quantity

4 NR

You may also be interested in



V53136.B - Flush consumer unit 36M white



V53136 - Flush consumer unit 36M smokegrey

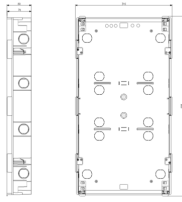


V53336 - Flush mounting box for V53136

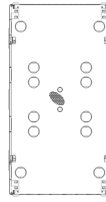
Video

- [Flush mounting consumer units](#)

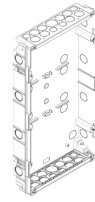
Drawings



Space view



Backside view



3D View

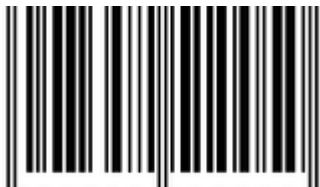
Technical data

- **Class group:** Distribution boards
- **Class:** Empty cabinet
- **Mounting method:** Flush-mounted
- **Type of covering:** None
- **Cover model:** None
- **Type of door:** None
- **Transparent cover/door:** No
- **With lock:** No
- **Nominal current (In):** 0 A
- **Height:** 588 mm
- **Width:** 316 mm
- **Depth:** 80,00 mm
- **Built-in depth:** 80,00 mm
- **Inner depth:** 78,00 mm
- **Colour:** Other
- **RAL-number:** 0
- **Number of modules:** 36
- **Number of rows:** 3
- **Width in number of modular spacings:** 36
- **Number of openings for flange plates:** 0
- **Extension possible:** No
- **Number of conduit inlets:** 46
- **Housing material:** Plastic
- **Surface protection:** Untreated
- **With mounting plate:** No
- **Suitable for outdoor use:** No
- **Suitable for lightning protection:** No
- **Degree of protection (IP):** IP40
- **Protection class according to IEC 61140:** II
- **Circuit integrity:** None

Certifications

- 00. CE Marking - EU
- 01. IMQ - Italy ([download](#))
- 96. Electrotechnical expert ([download](#))

Packaging



8 007352 510050

Code 8007352510050
Quantity 1 NR
Dim. 31.6x58x8 [cm]
Weight 925 [g]



8 007352 510067

Code 8007352510067
Quantity 4 NR
Dim. 58x38x42.5 [cm]
Weight 4,760 [g]

Legal

Vimar reserves the right to change at any time and without notice the characteristics of the products reported. Installation should be carried out by qualified staff in compliance with the current regulations regarding the installation of electrical equipment in the country where the products are installed. For the terms of use of the information on the product info sheet see [Conditions of Use](#).