



Floor mount turrets: Retractable turret 12M inox cover

V54412.01

System infrastructure / Enclosures and control units / Floor mount turrets /
Flush mounting

Retractable turret 12M inox cover

Product Status

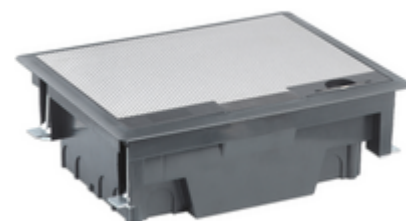
3 - Active

Minimum order quantity

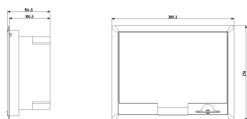
1 NR

Sheets, Manuals, Documentation

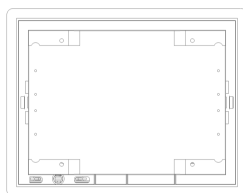
- [Multilanguage instructions sheet \(958 kb\)](#)



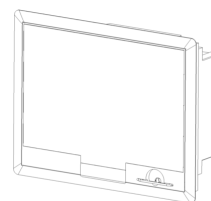
Drawings



Space view



Backside view



3D View

Technical data

- **Class group:** Subfloor systems
- **Class:** Device installation insert for subfloor installation
- **Cover model:** Rectangular
- **Number of inlets:** 12
- **Number of device cups:** 1
- **Number of socket outlets with protective contact CEE 7/3 (type F):** 0
- **Number of CEE socket outlets (IEC 60309) 16 A / 400 V / 5P (1, 2, 3, N, PE):** 0
- **Number of CEE socket outlets (IEC 60309) 32 A / 400 V / 5P (1, 2, 3, N, PE):** 0
- **Number of socket outlets British Standard BS1363:** 0
- **With cable outlet in cover:** Yes
- **Lockable cover:** Yes
- **Housing material:** Stainless steel
- **Surface protection housing:** Untreated
- **Material cover:** Stainless steel
- **Surface protection cover:** Untreated
- **Surface treatment cover:** Untreated
- **Cover load:** 1,5
- **Degree of protection (IP):** Other
- **With opening carpeting:** No
- **Protective frame carpeting:** Yes
- **Colour:** Other
- **RAL-number:** 7021
- **Suitable for indoor installation:** Yes
- **Suitable for outdoor installation:** No
- **Suitable for subfloor duct:** Yes
- **Suitable for hollow floor:** Yes
- **Suitable for double floor built-in:** Yes
- **Suitable for concrete installation:** No
- **Suitable for floors in computer rooms:** Yes
- **Suitable for wet cleaning:** Yes
- **Outer width:** 300,3 mm
- **Outer length:** 234,0 mm
- **Length built-in dimension:** 209,8 mm
- **Width built-in dimension:** 276,0 mm
- **Min. built-in depth:** 100,5 mm

Certifications

- 00. CE Marking - EU
- 43. UKCA mark - Great Britain

Packaging



Code 8007352735231
Quantity 1 NR
Dim. 36x30x13 [cm]
Weight 2,131 [g]

Legal

Vimar reserves the right to change at any time and without notice the characteristics of the products reported. Installation should be carried out by qualified staff in compliance with the current regulations regarding the installation of electrical equipment in the country where the products are installed. For the terms of use of the information on the product info sheet see [Conditions of Use](#).