



## Floor mount turrets: Retractable turret 12M hollow cover

### V54412

System infrastructure / Enclosures and control units / Floor mount turrets /  
Flush mounting

### Retractable turret 12M hollow cover

### Product Status

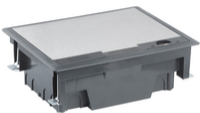
3 - Active

### Minimum order quantity

1 NR



You may also be interested in



V54412.01 - Retractable turret 12M inox cover



V54420.01 - Retractable turret 20M inox cover



V54420 - Retractable turret 20M hollow cover

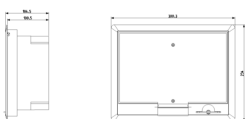


V54912 - Box for screed for turret 12M

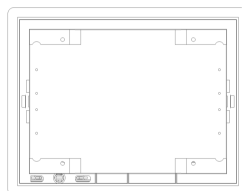
### Sheets, Manuals, Documentation

- [Multilanguage instructions sheet \(958 kb\)](#)

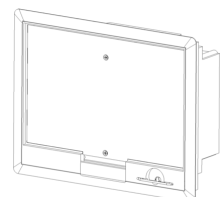
### Drawings



Space view



Backside view



3D View

## Technical data

- **Class group:** Subfloor electrical installation systems
- **Class:** Device installation insert for subfloor installation
- **Cover model:** Rectangular
- **Number of inlets:** 12
- **Number of device cups:** 1
- **Number of socket outlets with protective contact CEE 7/3 (type F):** 0
- **Number of CEE socket outlets (IEC 60309) 16 A / 400 V / 5P (1, 2, 3, N, PE):** 0
- **Number of CEE socket outlets (IEC 60309) 32 A / 400 V / 5P (1, 2, 3, N, PE):** 0
- **Number of socket outlets British Standard BS 1363:** 0
- **With cable outlet in cover:** Yes
- **Lockable cover:** Yes
- **Housing material:** Plastic
- **Surface protection housing:** Untreated
- **Material cover:** Plastic
- **Surface protection cover:** Untreated
- **Surface treatment cover:** Untreated
- **Cover load:** 1,5
- **Degree of protection (IP):** Other
- **With opening carpeting:** Yes
- **Protective frame carpeting:** Yes
- **Colour:** Other
- **RAL-number:** 7021
- **Suitable for indoor installation:** Yes
- **Suitable for outdoor installation:** No
- **Suitable for subfloor duct:** Yes
- **Suitable for hollow floor:** Yes
- **Suitable for double floor built-in:** Yes
- **Suitable for concrete installation:** No
- **Suitable for floors in computer rooms:** Yes
- **Suitable for wet cleaning:** Yes
- **Outer width:** 300,3 mm
- **Outer length:** 234,0 mm
- **Length built-in dimension:** 209,8 mm
- **Width built-in dimension:** 276,0 mm
- **Min. built-in depth:** 100,5 mm

## Certifications

- 00. CE Marking - EU
- 00. CE Marking - EU

## Packaging



**Code** 8007352735224  
**Quantity** 1 NR  
**Dim.** 36x30x13 [cm]  
**Weight** 2,131 [g]

## Legal

Vimar reserves the right to change at any time and without notice the characteristics of the products reported. Installation should be carried out by qualified staff in compliance with the current regulations regarding the installation of electrical equipment in the country where the products are installed. For the terms of use of the information on the product info sheet see [Conditions of Use](#).