



## Fixing and tools: Junction box cover screw 30mm

---

### V70198

System infrastructure / Enclosures and control units / Fixing and tools /  
Fixing

### Junction box cover screw 30mm

Screw, 30 mm long, for cover fixing



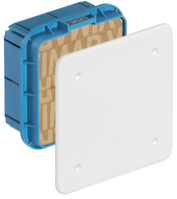
### Product Status

3 - Active

### Minimum order quantity

100 NR

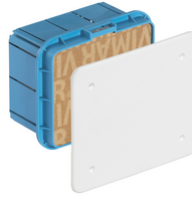
## You may also be interested in



V70001 - Flush junction box  
92x92x50mm



V70002 - Flush junction box  
116x92x50mm



V70003 - Flush junction box  
116x92x70mm



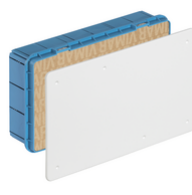
V70004 - Flush junction box  
154x92x70mm



V70005 - Flush junction box  
154x128x70mm



V70006 - Flush junction box  
195x154x70mm



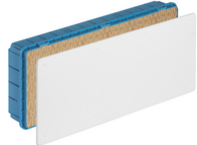
V70007 - Flush junction box  
287x154x70mm



V70008 - Flush junction box  
391x154x70mm



V70009 - Flush junction box  
479x154x70mm



V70010 - Flush junction box  
515x201x80mm



V70011 - Flush junction box  
515x292x80mm



V70207 - Flush junction box  
248x248x120mm



V70211 - Flush junction box  
515x248x120mm

## Technical data

- **Class group:** Fasteners
- **Class:** Wing screw

- **Total height:** 30 mm

# Packaging



8 007352 082267

**Code** 8007352082267  
**Quantity** 1 NR  
**Dim.** 3.2x0.4x0.4 [cm]  
**Weight** 1.4 [g]



8 007352 085428

**Code** 8007352085428  
**Quantity** 100 NR  
**Dim.** 5.1x4.3x5.3 [cm]  
**Weight** 136.67 [g]



8 007352 466357

**Code** 8007352466357  
**Quantity** 500 NR  
**Dim.** 14.4x11.6x6 [cm]  
**Weight** 726.75 [g]



8 007352 645196

**Code** 8007352645196  
**Quantity** 6,000 NR  
**Dim.** 36.5x33x13.5 [cm]  
**Weight** 8,820 [g]

# Legal

Vimar reserves the right to change at any time and without notice the characteristics of the products reported. Installation should be carried out by qualified staff in compliance with the current regulations regarding the installation of electrical equipment in the country where the products are installed. For the terms of use of the information on the product info sheet see [Conditions of Use](#).