



## Connector block boxes: Accessory for 2M boxes for hollow walls

---

### V71571

System infrastructure / Enclosures and control units / Connector block boxes  
/ Installation accessories

### Accessory for 2M boxes for hollow walls

Multifunction accessory: frame for 2-module inner side of hollow walls mounting, centring template and coupling joint for horizontal and vertical banks installation

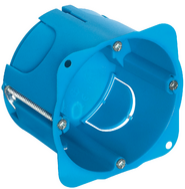
### Product Status

3 - Active

### Minimum order quantity

10 NR

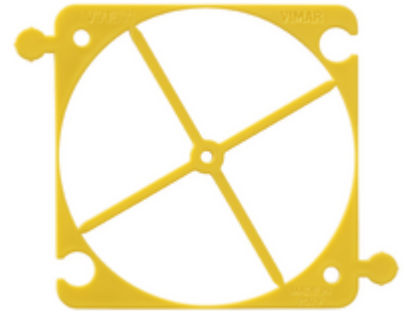
You may also be interested in



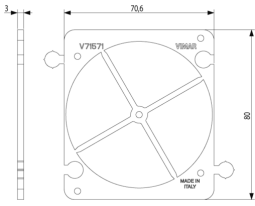
V71701 - Round flush-mount  
box f/hollow wall blue

### Video

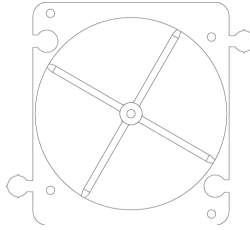
- [Tutorial ISOBOX EN](#)



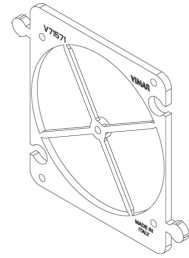
## Drawings



Space view



Backside view



3D View

## Technical data

- **Class group:** Connection material (electrotechnical)
- **Class:** Accessories/spare parts for junction boxes/cases for mounting in the wall
- **Type of accessory/spare part:** Other
- **Accessory:** Yes
- **Spare part:** No
- **Suitable for built-in installation box:** Yes
- **Suitable for central conduit box:** Yes

## Certifications

- 00. CE Marking - EU
- 01. IMQ - Italy ([download](#))
- 43. UKCA mark - Great Britain

## Packaging



**Code** 8007352443730  
**Quantity** 1 NR  
**Dim.** 9x8x0.3 [cm]  
**Weight** 5.18 [g]



**Code** 8007352443747  
**Quantity** 10 NR  
**Dim.** 9x8x3 [cm]  
**Weight** 51.8 [g]



**Code** 8007352443754  
**Quantity** 50 NR  
**Dim.** 19x14.3x9.5 [cm]  
**Weight** 335.2 [g]

## Legal

Vimar reserves the right to change at any time and without notice the characteristics of the products reported. Installation should be carried out by qualified staff in compliance with the current regulations regarding the installation of electrical equipment in the country where the products are installed. For the terms of use of the information on the product info sheet see [Conditions of Use](#).