



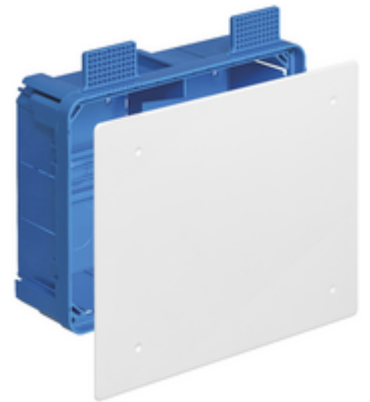
Junction boxes: Junction box hollow walls 205x164x73,5mm

V72006

System infrastructure / Enclosures and control units / Junction boxes / Flush mounting

Junction box hollow walls 205x164x73,5mm

Flush mounting junction box for hollow walls with white cover and fixing screws. Dimensions 205x164x73.5 mm



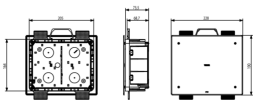
Product Status

3 - Active

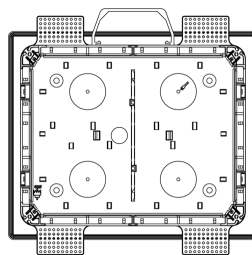
Minimum order quantity

7 NR

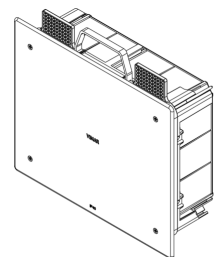
Drawings



Space view



Backside view



3D View

Technical data

- **Class group:** Connection material (electrotechnical)
- **Class:** Box/housing for built-in mounting in the wall/ceiling
- **Mounting method:** Flush-mounted
- **Shape:** Rectangular
- **Construction type:** Cable junction box
- **Model:** Other
- **Provided with revolving ring:** No
- **Couplable:** Yes
- **Equipped with:** None
- **Diameter:** 0 mm
- **Length:** 205,00 mm
- **Width:** 205,00 mm
- **Depth:** 0,00 - 73,50 mm
- **Inner depth:** 73,50 mm
- **For number of electric fittings:** 0
- **Mounting switching equipment:** Spread
- **With screws:** Yes
- **Housing feed-through by break-out opening:** Yes
- **Housing feed-through by seal membrane:** No
- **Housing feed-through by nozzle:** No
- **Housing feed-through by step membrane:** No
- **For tube diameter:** Other
- **Pipe locking:** Yes
- **Pipe locking optional:** Yes
- **Inlet from the rear:** Yes
- **Number of inlets:** 14
- **Number of included spouts:** 0
- **Material:** Plastic
- **Halogen free:** Yes
- **Surface protection:** Untreated
- **Colour:** Blue
- **Degree of protection (IP):** IP20
- **Cover model:** Blind cover
- **Transparent cover:** No
- **Cover attachment:** Screwed
- **Sealable:** No
- **With screening:** No
- **Air tight:** No
- **Max. conductor cross section:** 0
- **Number of poles of the clamp:** 0
- **Clamp position fixed:** No
- **Luminaire hook mounting:** No
- **Nozzle:** None
- **Special application:** None

Certifications

- 00. CE Marking - EU
- 01. IMQ - Italy ([download](#))
- 43. UKCA mark - Great Britain
- 50. Product Environm. Profile
- 96. Electrotechnical expert ([download](#))

Packaging



Code 8007352589919
Quantity 1 NR
Dim. 22.8x22.5x7.6 [cm]
Weight 351 [g]



Code 8007352589926
Quantity 7 NR
Dim. 59.5x26.5x41.5 [cm]
Weight 2,915 [g]

Legal

Vimar reserves the right to change at any time and without notice the characteristics of the products reported. Installation should be carried out by qualified staff in compliance with the current regulations regarding the installation of electrical equipment in the country where the products are installed. For the terms of use of the information on the product info sheet see [Conditions of Use](#).