

plana

 **PLANA**

 **VIMAR**  
energia positiva



## **Plana. Sublime essentiality.**

Energy is a natural phenomenon which surrounds us always. Knowing how to manage and distribute it in the best way, avoiding waste, is a primary need every day. Plana satisfies this need in the simplest way: rigorous design, elegant appearance, sophisticated details, it becomes a natural part of your home and your daily life. The result of an intelligent technology with intuitive controls to manage lights, temperature, comfort and safety devices. With a minimalist appearance, modern materials and bright colours - ice, shiny or classic, to suit any style.



## TOTAL LOOK

THE LIGHTNESS OF WHITE  
THE ELEGANCE OF SILVER.

Delicate and sombre, Plana with its white keys and functions, fits easily into any setting with a strong minimal flavour. Technological, sophisticated and brilliant Plana Silver with silver controls: for contemporary elegance.



**Plana.**  
Reflex snow cover plate with white buttons: essential aesthetics.



**Plana Silver.**  
Metal cover plate with shiny silver controls: technological design.



## **EASY** CONTROL

INTERCHANGEABLE CONTROLS OFFER GREAT FREEDOM OF INSTALLATION.

Marked by essential lines, the keys come in different sizes: one, two or three modules, to suit all demands. And different types of controls, from infrared to remote controlled, allowing you to control all functions with the highest standards of functionality.



**Special controls.**

Controls with specific, special functions, responding to every need.



**Touch screen.**

All the devices in a room or throughout the home can be activated and controlled simply by touching the screen.



**Radiofrequency.**

Wireless and battery-less controls based on green technology, offering full flexibility for new installations and system extensions without needing any masonry work.



**Infrared.**

Controls that detect the presence of people in a room and automatically activate the various functions.



**Interchangeable buttons.**

With one, two or three modules, laser-engraved icons indicating the function associated to the control, replaced quickly and easily on the hook-on mechanism. Functional versatility for a practically infinite choice.





# ENERGY DISTRIBUTION

SAFE, MODULAR SOCKET MEETING  
INTERNATIONAL STANDARDS.

The best in reliability and safety: Plana socket outlets are all fitted with SICURY shutters, Vimar's patent granted free of charge to all manufacturers, preventing accidental contact with live parts. Of different types responding to different needs, the socket outlets are available in the most common international standards, and their high modularity makes it possible to install them in different compositions.





**Dedicated sockets.**

Intuitive use and top safety: each colour corresponds to the connection to a specific electrical line, guaranteeing output continuity.



**International standards.**

Plana speaks a universal language: sockets are available in the most common international standards, guaranteeing safe connections anywhere in the world.



**Modularity.**

One, two or three modules and different types, responding to every functional need. Great versatility, for a wide range of installation solutions.



# PERFECT WELCOME

ADVANCED, CONTEMPORARY AND  
EASY-TO-COORDINATE VIDEO DOOR  
ENTRY SOLUTIONS.

Whatever your installation needs. Plana has a high-  
performing video door entry solution for you, a perfect  
blend of design, technology and functionality.  
With no compromise.



**Flush mounting video door entry unit.**

An elegant, modern video door entry unit with colour display and swipe controls. Can be customised with any Plana cover plate and completed with a home automation supervision module.



**TAB: surface mounting video door entry unit.**

A series of video door entry units with a minimalist style: simple lines, ultra-thin profiles, capacitive keypad and user friendly controls, in both hands-free and handset versions. Reflex finishes that coordinate perfectly with the style of Plana.



**Full Flat video touch screen.**

The video touch screen with 4,3" colour display ensures the full management of all video door entry functions, offering a high-definition image of the person at the door and full control of the home automation system.



A blue electric guitar is mounted on a silver metal stand in a living room. The guitar is positioned vertically, leaning against a white armchair. The room features a large potted plant with green leaves in the background, blue curtains, and a window with a view of a balcony. The floor is covered with a light-colored, textured rug.

## PERSONAL SOUND

EXCEPTIONAL MUSICAL PERFORMANCES  
PLAYING IN EVERY ROOM.

A system of the highest digital audio quality managing up to 4 independent music sources, allowing you to listen to classical music in the kitchen, pop hits in the bedroom and the radio in the bathroom. Compatible with Mp3 players, iPods and iPhones.



**USB socket outlets**

They enable fast charging for portable electronic devices such as smartphones, tablets, MP3 players and GPS navigators.



**Speakers.**

Flush mounting, 3 and 8 modules, or surface mounting, with closed volume and bass reflex technology, for excellent playback with no distortion.



**Intercom calls.**

Intuitive controls, designed down to the finest detail, for communicating with every room in the building and managing the audio monitoring function.



**Multimediality.**

Connect any external music source to the system, as well as TV sockets, PC, USB: your home will always be connected to your favourite media.



**Touch screen.**

Easy supervision of musical programming in every room: at the touch of a finger. Control becomes intuitive and total.





# LIGHTS EVERYWHERE

A REASSURING PRESENCE DURING  
THE DAY AND AT NIGHT.

Lighting creates the emotional space of a home, and with Plana this space becomes intelligent. Soft, intense, emergency lighting, signalling, automatic: lighting is managed where and when you prefer or where it is required. Even in the dark or during a black out.



**Emergency lighting.**

Safety and style are the bywords for the lamps that automatically come on in a power cut, guiding you step by step towards the exit.



**Modular lights.**

LED lights, ideal step markers, come on automatically in the event of an emergency or when you want them to.



**Warning lights.**

Single, double or prismatic, indicate a gate open or an outside light left on.



**Furnishing with light.**

LED RGB technology and the style of Plana, the winning combination for furnishing any room with your favourite colours, without compromising on the elegant and minimalist design of the cover plates.



**TORCIA, hand lamp.**

Turns on immediately in the event of a black out and becomes a hand lamp to help you find your way even in the dark. When the power comes back on, you put it back into any socket, handy for use at any time.





## **SAFETY** FIRST!

SOPHISTICATED, SILENT TECHNOLOGIES  
WATCHING OVER YOU 24-7.

Plana allows you to sleep in peace: technical alarms are triggered in the event of gas and water leaks, power surges, black outs or if intruders are detected. What's more, the video control system watches over every room in the home.



**Interlocked socket.**

The most simple mechanism to protect you from the hazard of an electric shock, in the bathroom and the kitchen.



**Video surveillance.**

Elegant indoor cameras discreetly monitor every room, keeping everything under control.



**Access control.**

For reliable and flexible access control in offices, hotels and SPA/gyms, where it is necessary to control the flow of person can access to the building.



**Gas detector.**

Signals, blocks the supply and sends a warning: in a nutshell, it watches over your safety, night and day. With an ultra-precise technology that is particularly sensitive to gas leaks. Allowing you to sleep soundly.



**By-alarm: burglar alarm.**

Protecting spaces from intrusion, in both residential and small-scale business contexts, is now even easier and more intuitive. Stand-alone and expandable with a vast array of devices, the By-alarm system stands out due to its high performance levels and its connection with the user (via GSM or via IP) and surveillance bodies (via SIA and CONTACT-ID protocols), as well as its integrability with By-me home automation.



**CCTV.**

The surveillance system ensures greater security by means a wide range of products and technology. IP and AHD technologies guarantee even higher performance levels for the monitoring in critical areas, AHD 1080p, 3 to 4 Mpx IP and 5 Mpx IP cameras combine the high resolution and an easy installation with automatic configuration of the entire system and the new video coding of the H.265 compression complete the range with a greater data streaming rates.





## **EXTRA** COMFORT

THE PLEASURE OF CHOOSING THE  
RIGHT ATMOSPHERE FOR ANY TIME  
OF THE DAY.

Plana transforms your home into an oasis of well-being: from when you wake up in the morning to the temperature you want to come home to at the end of the day. You can set your preferred climate in every room, managing settings and changing them to suit your needs.





### Timer-thermostats and thermostats.

With touch display and RGB backlighting to control the temperature in every room and check the consumptions of the whole building.



### App By-clima.

The intuitive App makes it possible to remotely control the Wi-Fi and GSM surface mounting devices from your smartphone, allowing you to rapidly set the flush mounting devices by sending an audio signal.

App By-clima

### Advanced climate control.

At the slightest change in temperature or humidity, the relative electronic sensors send the data to the climate control devices, which automatically intervene to optimise the loads according to the environmental conditions, and to prevent condensation in underfloor heating systems.



### Intelligent energy management.

With Plana, energy management is intelligent. You can view the energy consumed by individual loads and throughout the entire building, including non-electrical measurements such as cubic metres of water and gas. And if a photovoltaic system is installed, the electricity produced during daylight can be automatically sent to selected household appliances, reducing mains electricity consumption and ensuring the most efficient self-produced consumption.

A modern living room with a light-colored leather sofa, a coffee table, and a wall of perforated metal panels. The room features large windows with white curtains and a wooden floor. A semi-transparent text box is overlaid on the right side of the image.

## YOUR STYLE

EVERY DEVICE IS MADE TO MEASURE  
TO SUIT YOUR PERSONAL NEEDS.

Plana cover plates come in four materials and a wide range of colours, and can be embellished with laser-engraved with logos. Every button can be customised with symbols and day and night back lighting, to make their function even clearer.



**Backlighting.**

Disk, ring or symbol backlit: choose the lighting you prefer. The controls are visible night and day.

**Freedom of choice.**

Plana can be customised to suit your tastes and needs: **laser engraving, indelible and long lasting, with maximum definition.**

**Library of symbols.**

A wide range of icons with minimal markings to customise the buttons and make the use of the controls even more immediate.



**Made-to-measure controls.**

Managing your whole home with minimum effort is one of the objectives the Plana technology sets out to achieve. This is why you can choose from rocker, infrared and remote, to give everyone the type of control they need.



Three different button sizes, with or without symbols, all back-lit to customise your system even better.





# HOME AUTOMATION

INNOVATIVE SOLUTIONS FOR  
EFFECTIVE AND EFFICIENT HOME  
MANAGEMENT.

The evolved solutions of Plana offer a concrete response to the different needs of designers, installers and home owners, making a welcoming home also an intelligent one.

Control



Comfort



Energy efficiency



Safety



### Supervision.

All home functions, from climate control to lighting to the intrusion detection system and energy management, can be controlled centrally from a single control point, such as a touch screen with simple and intuitive interfaces.

### Climate control.

Thermostats and electronic probes precisely control the temperature, managing both underfloor and fan-coil systems to ensure full comfort.

### Energy management.

Controlling loads and energy produced leads to greater awareness of energy efficiency.

### Environmental safety.

Life at home is even safer, with technical alarms that signal any gas or water leaks and other faults and every load is controlled in order to switch off those as low priority so the appliances of the home are protected from power failures.



Intelligent and intuitive, By-me is the home automation system for the integrated management of all functions. Control, comfort, energy efficiency and safety dialogue constantly through a sophisticated and intuitive technology combining style and functionality with no compromises; optimising costs and consumptions, simply and intuitively managing all everyday activities from the smallest to the most important, helping to create a truly comfortable home.



### By-alarm integrated with By-me.

By-alarm can be fully integrated with the By-me home automation system through the installation of an IP interface which guarantees a secure and protected connection, both locally and remotely via an internet connection. The functions can be controlled locally - using the touchscreen and the home automation commands and scenarios - or remotely, using the free By-web APP on a smartphone or tablet.



### Remote control by By-web app.

The home at your fingertips. Thanks to App and software that enable the remote control of the Home Automation functions, in order to manage all the system supervised by video touch screen, PC, smartphone and tablet.





# OFFICE AUTOMATION

HIGH-PERFORMING AVANT-GARDE  
SYSTEMS IN STEP WITH THE FUTURE.

For the control, comfort, energy efficiency and safety of offices and tertiary premises, Plana offers a series of devices and systems for the quick, effective and centralised management of all work spaces.



**Global monitoring.**

The whole building is monitored from a single control point. Elegant touch devices are used to control every room, managing all the functions in the building.



**Motion detection.**

Fitted with an infra-red technology motion detector, the lights come on only when and where needed, and the same device can also manage the intrusion detection alarm.



**Central control.**

A small technological gem to control every room, with up to 40 different functions. With the immediacy of touch technology.



**Data transmission.**

Different types of sockets are used to send and receive data quickly and safely, ensuring full working autonomy.



**Customised atmosphere.**

To respond to different working moments, customised scenarios can be activated - lowering a screen, blinds, dimming the lights or switching on the video projector.



**All at your fingertips.**

Thanks to the versatility of Plana, the control devices - and the power distribution and data transmission devices - are always close to hand, with table-top installation solutions.

**WELL-CONTACT PLUS**  by-com

An automation system developed on the KNX standard for total building management. In an office, community centre or a gym, Well-contact Plus constantly monitors the building, managing lights, temperature, safety, energy and accesses even from a PC, ensuring functionality and comfort in every room.

**NETSAFE** by-com

A structured wiring system for full connection: data transmission is totally safe, quick and easy, both inside and outside the building. Netsafe blends both technically and stylishly with a conventional electrical system, with highly versatile installation options - flush-, wall-, floor- and underfloor-mounting.



A modern hotel room featuring a large bed with white linens, a stone wall, and a view of greenery. The room has a contemporary design with dark wood accents and a large window. The text is overlaid on a semi-transparent dark rectangle.

# HOTEL SOLUTIONS

ADVANCED, FLEXIBLE TECHNOLOGIES  
FOR HOTEL SERVICES.

For hotel management, Plana has a range of innovative devices and systems to control accesses, spaces and manage climate and energy, optimising the facilities and ensuring excellent comfort for guests at all times.



**Access control.**

Elegant transponder and smart card readers to provide access to various rooms only for authorised persons, thereby guaranteeing absolute security throughout the building.



**Presence detection.**

Simply insert the magnetic card and the room shows all its splendour: the courtesy lights come on and the temperature is set to the optimum level. A great idea, also for reducing energy waste.



**Special devices.**

Some special devices are suitable to communicate the room state indicating by warning units "Do not disturb" or "Please Clean" activated by the guest.



**Controls.**

With LED backlit buttons to manage up to four different functions locally.



**Temperature control.**

Climate control device for keeping each room under control. With the KNX standard, it dialogues with the main heating installations using this international protocol.



**Touch screen.**

Touch technology to monitor and manage a whole area of the building or a single room.





## **MATERIALS** & COLOURS

ICY, SHINY, CLASSIC FOR EVERY STYLE.

The elegance of metal, the warmth of wood, the modernity of technopolymer and the freshness of Reflex: every room has its own look, cleverly enhanced and underlined by Plana. First and foremost with its materials and its colours: many variants to satisfy any taste.





Reflex



Metal



Natural wood



Technopolymer

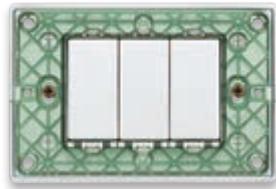
## Reflex



40 Reflex ash



41 Reflex snow



42 Reflex air  
Transparent cover plate



43 Reflex amber



44 Reflex mint



45 Reflex water



46 Reflex cedar



47 Reflex emerald



48 Reflex orange



49 Reflex tobacco



50 Reflex sapphire



51 Reflex ruby

## Metal



70 Metallized bronze



71 Metallized silver



72 Metallized green



73 Metallized blue



74 Pearl nickel



75.01 Pearl silver



76 Antique brass



81 Brushed aluminium

## Technopolymer



01 White



02 Ivory



03 Beige



04 Cream



05 Black



06 Granite white



20 Matt silver



21 Matt nickel



22 Matt champagne



23 Iridescent brown



24 Polished gold



25 Matt gold



31 Ash



32 Fir



33 Makoré

## Natural wood



61 Maple



62 Pear-tree

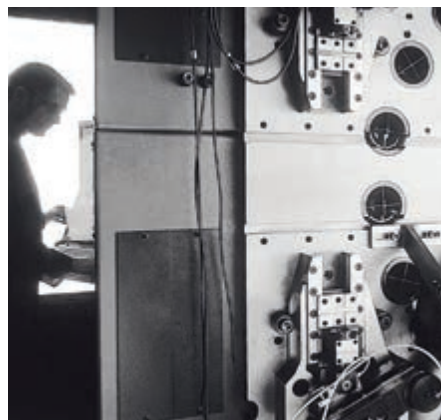


63 Cherry



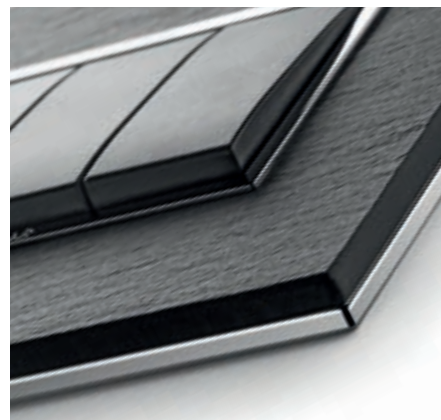
### **A history with deep roots.**

Light is energy... heat... life... in this direction we work since 1945, with passion and the desire to innovate. A long tradition and a history of success that over the years, has led us to be protagonist in Italy and present in the main international markets.



### **Made in Italy.**

The heart of our company, where we create, design and manufacture our products, is in the North East of Italy because we believe in the Made in Italy in all its forms. From the materials to the shapes, the color matches to electronic processes, we are distinguished by a style and technology that speak our language all over the world.



### **Design and technology.**

Our products evolve with lifestyle thanks the special attention to modern living trends. This allows us to offer finishes, details that make our products items of interior design. Convinced that form and technology must live together, we dedicate time and energy on developing new projects of electronic and electrotechnical engineering and materials.



### **Research and Development.**

To ensure the best of technology and design, 6% of our annual turnover is invested in R&D. This has allowed us over the years to lodge more than 180 patents worldwide, reflecting the attention of the great innovation like the little details that make every day life more simple and comfortable.



### **Production quality and customer service.**

Before leaving the factory, we test our products one by one. It is no coincidence that we deserved the most important quality certifications. And to ensure to our customers the best, we offer constant support before and after sales, following them at all stages of the relationship with services designed and calibrated to their needs.

### **Internationality.**

We are a team of 1300 persons in Europe, Asia and South America, ready to satisfy our customers all around the world. We offer our products in over 100 different Countries, with different regulatory standards and different lifestyle, spreading around the world design and Italian technology.

### **Green Attitude.**

We work with great care of the environment in all what we do, sure that only by protecting the world it will be possible to progress and grow in the future. Our manufacturing cycle is characterized by low environmental impact. We recycle 60% of the plastic material waste and most of the metal. We only use water-based paints or UV curing. We are replacing the electroplating bath with the innovative and more environmentally friendly MSD process that eliminates any type of harmful emissions.

### **All-round safety.**

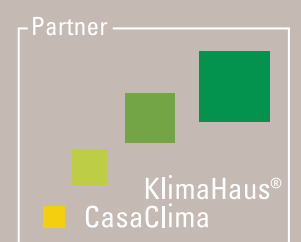
The safety of people is an absolute priority. This is why we want to create secure and comfortable environments, using high quality and user-friendly products that are the outcome of research targeting the common good. Like the SICURY shuttered mechanism, a patent system developed in 1968, which revolutionized the safety of power sockets, and which we licensed free of charge to all operators in the sector, so that the lives of children could be made safer and parents less worried.



A CULTURE BASED  
ON **SOLID** AND  
**CLEAR VALUES.**

Introduction	page 1	Sound	page 10	By-me	page 20
Total look	page 2	Light	page 12	By-com	page 22
Controls	page 4	Safety	page 14	Materials	page 26
Energy	page 6	Comfort	page 16	Colours	page 28
Video door entry	page 8	Customization	page 18		





B.D16008 EN 1703



8 007352 543904



Viale Vicenza, 14 · 36063 Marostica VI · Italy · Tel. +39 0424 488 600 · Fax +39 0424 488 709 · [www.vimar.com](http://www.vimar.com)