



## SYSTEM INFRASTRUCTURE

New retractable turrets.  
A choice for safety with  
the best styling result.

# SYSTEM INFRASTRUCTURE



# New retractable turrets

## for installation on floating or screed floors

**Vimar's line-up has been expanded with the new floor mounting retractable turrets. These are practical and beneficial solutions, especially in the service industry**, where the environments often need to be reorganised and multiple services need to be connected beside the electrical distribution (phones, the Internet, data processing, etc.).

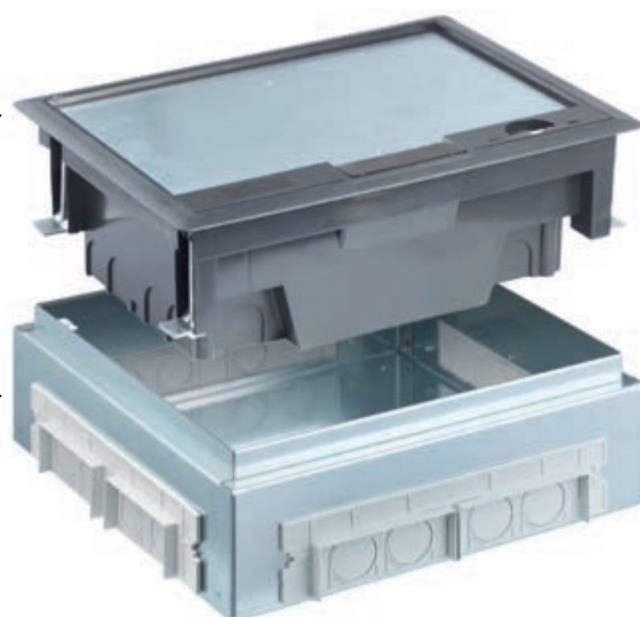
In offices, meeting rooms, open-plan settings, stores and in general in situations where space restrictions apply, floating or screed floors can be equipped to house an electrical and data distribution network which guarantees greater functionality and versatility for the surroundings. A suitable solution for optimally designing the electrical system.



### RETRACTABLE TURRET for floating floors

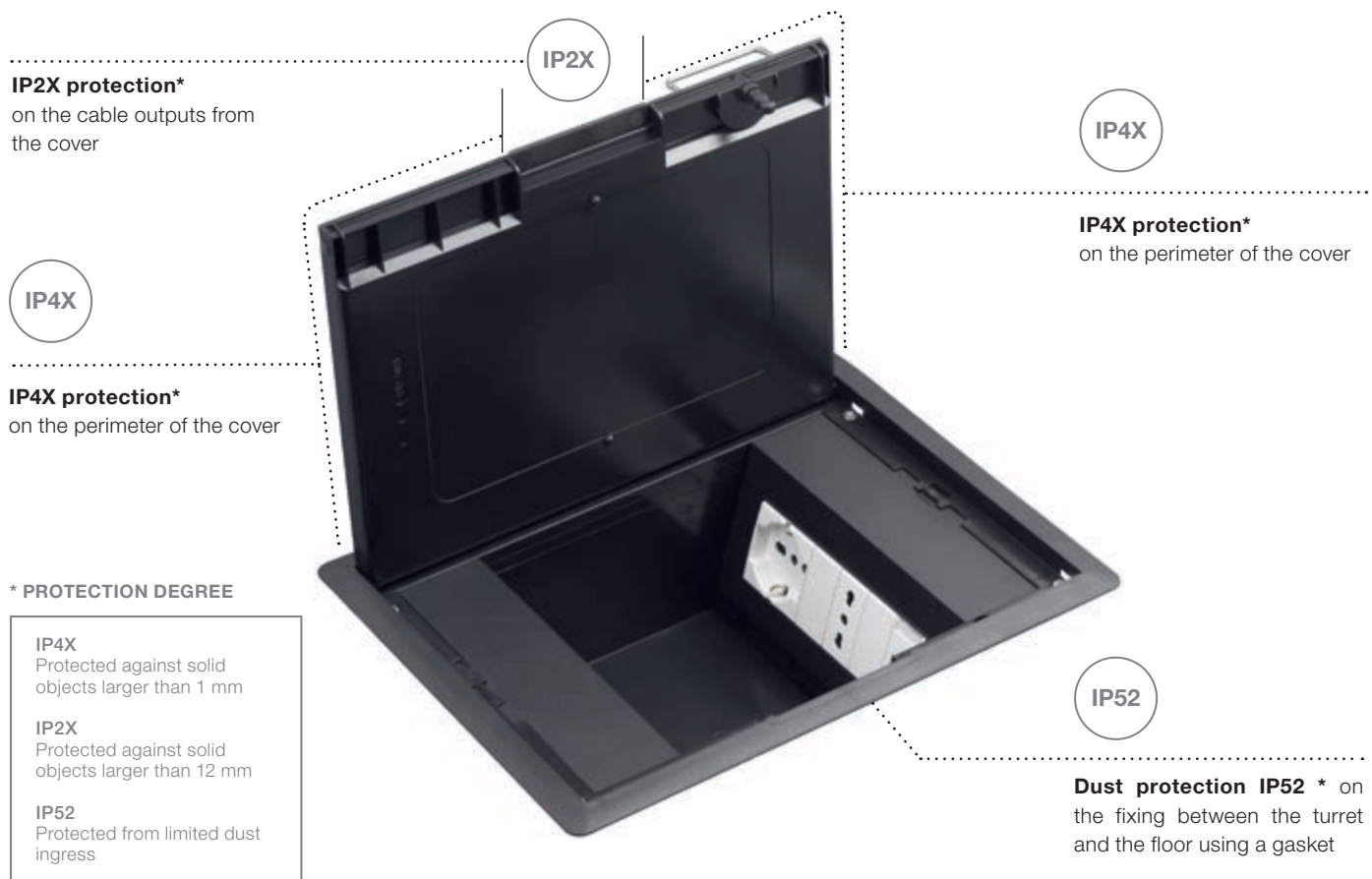
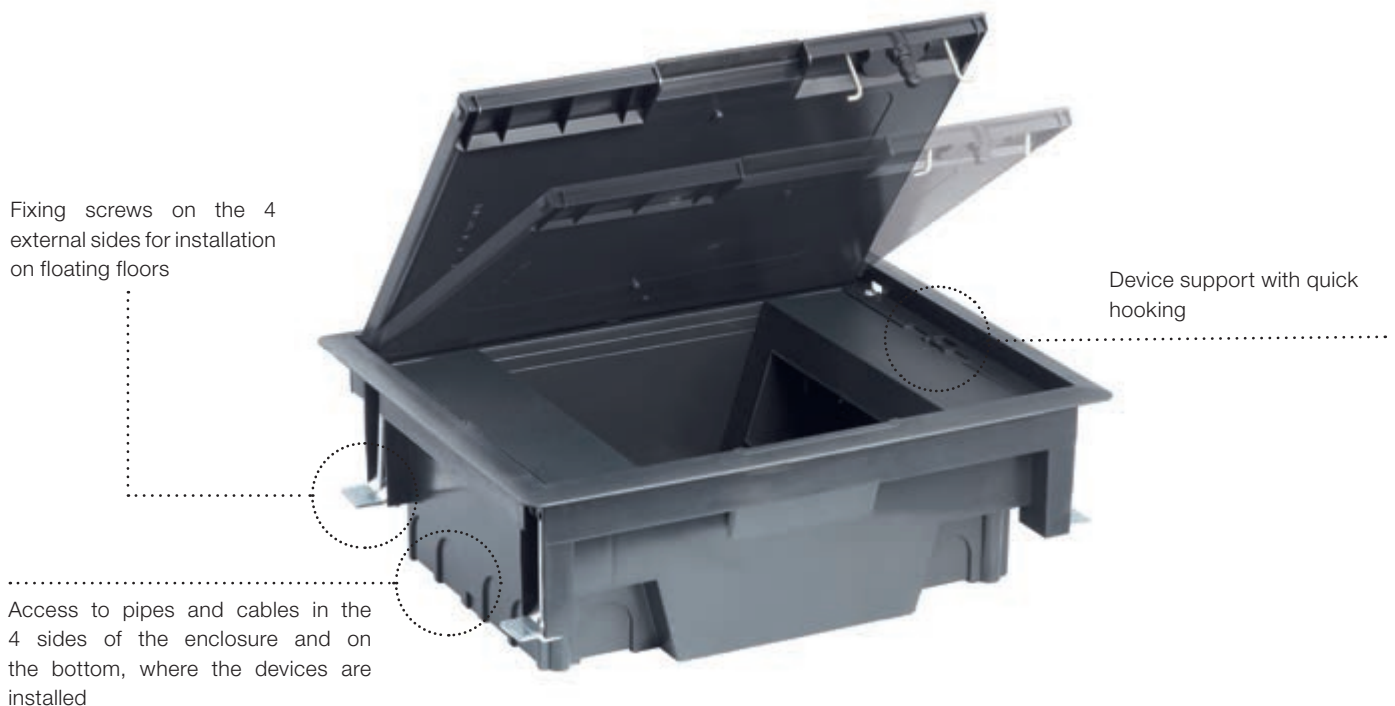
Available for installing 12 or 20 modules for devices in the Eikon, Arké and Plana wiring series, made from durable plastic and fitted with a stainless steel cover or a cable to house the floor finish, such as fitted carpet, wood or tile and minimise the visual impact of the turret once fitted.

The turret can be installed on floating floors or, thanks to the **METAL MOUNTING BOX**, it can be installed in screed floors.





### Retractable turret for floating or screed floors (with dedicated mounting box).



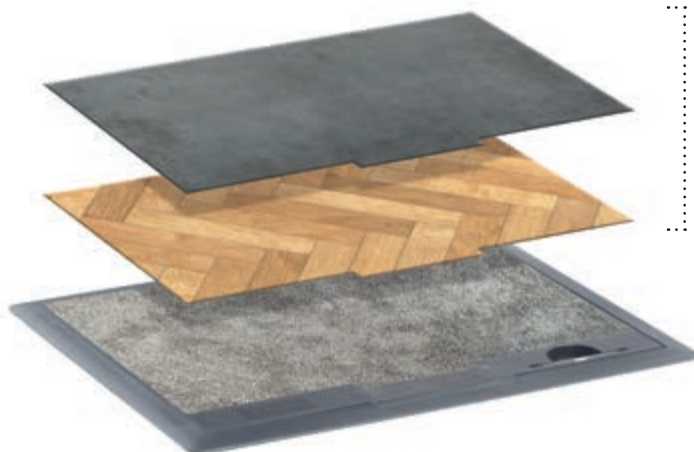
## COVER CHARACTERISTICS

### Hard-wearing cover.

Can withstand loads of up to 1500 N

### Simplicity.

The cover is reversible: it can be removed and reattached on the opposite side, allowing for more convenient opening without detaching the turret from its base

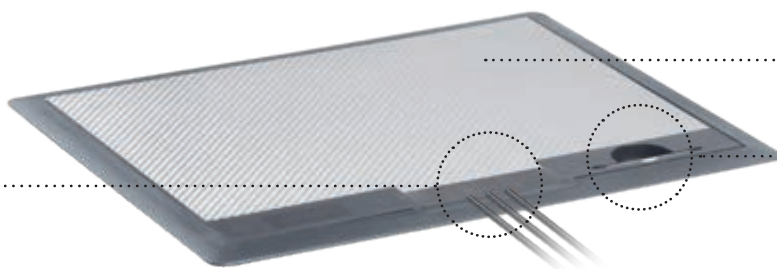


**Hollow cover for guaranteed aesthetic quality.** Designed to accommodate floor finishes

IP2X

### IP2X protection\*

on the cable outputs from the cover



**Stainless steel cover** for greater resistance

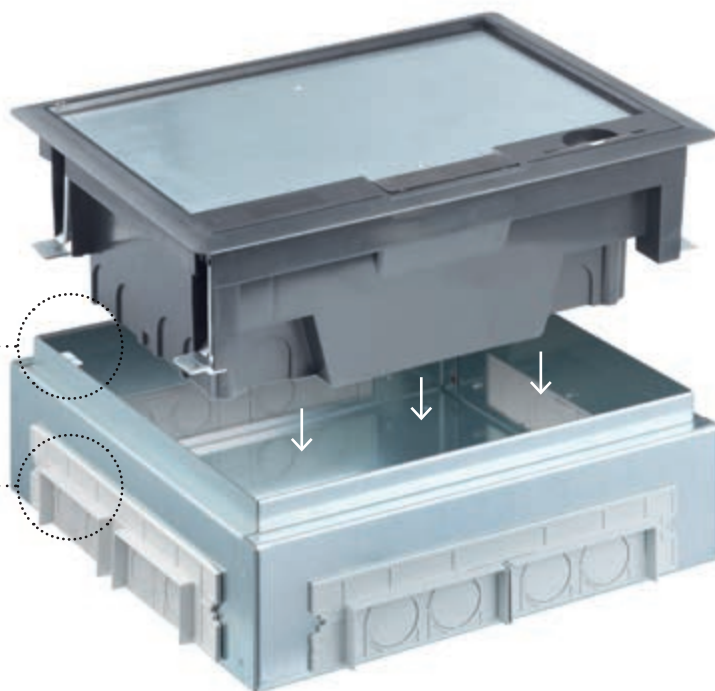
**Concealed handle** for cover opening and 1/4 turn screw locking system

## INSTALLATION WITH MOUNTING BOX FOR SCREED

Turret fixing slot

Opening for raceways and corrugated pipes on all 4 sides

**Simple mounting tasks** thanks to the anchor for earthing wiring



## Device installation in the retractable turret.

2 connector block compartments in the **12-module** version and 4 compartments in the **20-module** version with the central channel for managing the cables of the connected devices, compatible with the **Eikon**, **Arké** and **Plana** wiring series.

### 12-module version

6 modules + 6 modules

### Connector block compartment

### 20-module version

5 modules + 5 modules 5 modules + 5 modules



↑ ↑  
**2 side connector block  
compartments for 6  
modules each**



↑  
**Maximum safety at the  
workstation.**  
Thanks to the ability to install  
protection circuit breaker device  
circuit breakers / residual current  
devices that match the wiring  
series



↑ ↑  
**4 side connector block compartments for 5  
modules each.**  
The two adjacent compartments are separated by  
a dividing screen to be used for different systems.  
If you want to dedicate the 10-module row to the  
electrical components, simplifying installation and  
wiring, you can remove the dividing screen

## The versatile range of turrets.

To design system solutions that match the wiring series perfectly, allowing for optimal integration into environments in terms of both aesthetics and functionality.

### FOR FLOATING FLOORS

### IN THE EVENT OF INSTALLATION ON SCREED FLOOR

#### 3 modules



**V54313** in stainless steel



**V54903** in steel

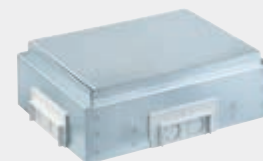
#### 12 modules (6+6)



**V54412** hollow cover



**V54412.01** stainless steel cover



**V54912** metal mounting box

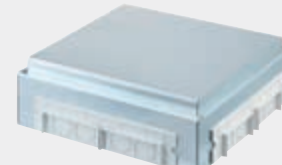
#### 20 modules (5+5+5+5)



**V54420** hollow cover



**V54420.01** stainless steel cover



**V54920** metal mounting box



**Energia Positiva.** Insieme

