



Adaptors: S17 multi-adaptor+2P17/11+P30 out. white

00323.B

Portable installation / Plugs and socket outlets / Adaptors / Residential adaptors

S17 multi-adaptor+2P17/11+P30 out. white

SICURY 250 V~ multiway adaptor, white - max load 1500 W - 2P+E 16 A plug, Italian standard S17 - two 2P+E 16 A Bpresa socket outlet, Italian standard P17/11 and one 2P+E 16 A socket outlet, Italian standard P30 (lateral and central earth contacts)

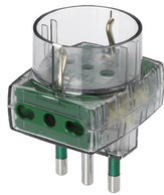


3 - Active

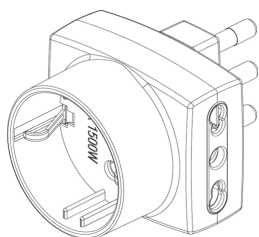
50 NR



00323 - S17 multi-adaptor+2P17/11+P30 out. black



00323.F - S17 multi-adap.+2P17/11+P30 outs smoke-g



3D



- **Class group:** Domestic switching devices
- **Class:** Plug adapter
- **Model:** Compact
- **With plug for AU/NZ/PG/AR (AS/NZS 3112) (type I):** No
- **With plug for BE/DE/NL/RU (protective contact CEE 7/4, type F):** No
- **With plug for FR (earth pin) (type E):** No
- **With plug for UK/HK (BS 1363) (type G):** No
- **With plug for IT (S/P 11):** No
- **With plug for IT (S/P 17) (type L):** Yes
- **With plug for US/CA/CN (NEMA 1-15) (type A):** No
- **With plug for US/CA/CN (NEMA 5-15) (type B):** No
- **Type of bus:** Other
- **Number of USB ports:** 0
- **Colour:** White
- **Nominal voltage:** 230,00 - 230,01 V
- **Nominal current:** 0,00 - 16,00 A
- 00. CE Marking - EU
- 01. IMQ - Italy ([download](#))
- 10. EAC Eurasian Customs Union
- 37. Marking - Morocco
- 98. Warning for adapters ([download](#))
- 99. WEEE Directive ([download](#))



8 007352066915

8007352066915
1 NR
14x6x4.3 [cm]
75 [g]



8 007352066922

8007352066922
50 NR
28x25.5x19.5 [cm]
3,750 [g]

Vimar