



Shared components: IP 4.3in PoE touch screen 8M white

01420.B

Smart systems&products / View smart system / Shared components /
Devices

IP 4.3in PoE touch screen 8M white

Touch screen with 4.3" IP capacitive colour display, used as a home automation system supervisor, IP/Due Fili Plus internal video entryphone, IP video camera and CCTV system manager, power supply PoE or 12-30 Vdc, with built-in 8 (4+4)-module mounting frame, to be completed with Eikon, Arké or Plana cover plate, white

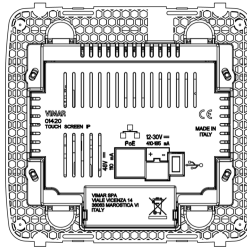
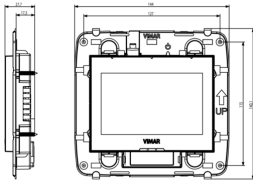


3 - Active

1 NR

- [Multilanguage instructions sheet \(1359 kb\)](#)
- [Manuale piattaforma View IoT Smart Syst. \(9599 kb\)](#)
- [Manuel installateur app View Pro \(6937 kb\)](#)
- [Manual del instalador View Pro \(6921 kb\)](#)
- [Installer manual View IoT Smart Systems \(7021 kb\)](#)
- [Εγχειρίδιο τεχνικού εγκατάστασης \(7114 kb\)](#)
- [Installationsanleitung View Pro \(6907 kb\)](#)
- [User Manual Touch screen \(5248 kb\)](#)
- [Manuale utente touch screen \(4848 kb\)](#)

- Integration with video door entry system
- Energy control
- Lights and roller shutters configuration
- System setup
- Integration with burglar alarm system
- Climate control customisation
- Scenario customisation
- CCTV and alarm customisation
- Philips Hue integration



3D

- **Class group:** Installation bus systems
- **Class:** Signalling and operation panel for bus system
- **Bus system KNX-RF (Radio Frequent):** No
- **Bus system radio frequent:** No
- **Bus system LON:** No
- **Bus system Powernet:** No

- **Radio frequent bidirectional:** No
- **With bus connection:** No
- **Material:** Glass
- **Material quality:** Other
- **Colour:** White
- **RAL-number (similar):** 9016

- 00. CE Marking - EU
- 37. Marking - Morocco
- 43. UKCA mark - Great Britain

- 92. RoHS UAE
- 99. WEEE Directive ([download](#))



8 007352586079

8007352586079
1 NR
21.7x22.1x8.3 [cm]
432.2 [g]



8 007352612600

8007352612600
8 NR
51x34x26.5 [cm]
4,176 [g]

Vimar