



## Shared components: Energy meter 3IN toroidal sensor

---

### 01450

Smart systems&products / By-me Plus / Shared components / DIN devices

#### Energy meter 3IN toroidal sensor

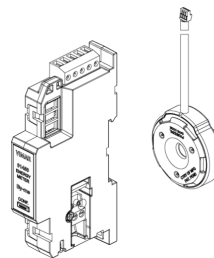
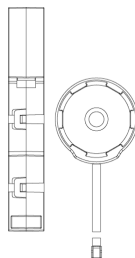
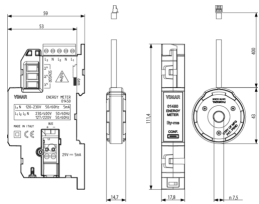
Energy meter, 3 inputs for toroidal current sensor, measurable powers 25 W-100 kW, single phase power supply 120-230 V 50/60 Hz three phase 230/400 V 50/60 Hz, installation on DIN rail (60715 TH35), occupies 1 x 17.5 mm module. Supplied with toroidal current sensor.



3 - Active

1 NR

- [Multilanguage instructions sheet \(2615 kb\)](#)
- [By-me automation-fw Compatibility \(206 kb\)](#)
  
- [Three-phase load control system with pho](#)
- [Single-phase load control system with ph](#)
- [Energy control](#)



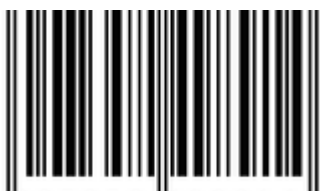
3D

- **Class group:** Installation bus systems
- **Class:** Sensor control for bus system
- **Bus system KNX:** No
- **Bus system KNX-RF (Radio Frequent):** No
- **Bus system radio frequent:** No
- **Bus system LON:** No

- **Bus system Powernet:** No
- **Other bus systems:** Other
- **Model:** Other
- **Mounting method:** Other
- **Number of inputs:** 3
- **Degree of protection (IP):** IP20

- 00. CE Marking - EU
- 37. Marking - Morocco
- 43. UKCA mark - Great Britain

- 46. UK PSTI compliance
- 96. Electrotechnical expert ([download](#))
- 99. WEEE Directive ([download](#))



8007352498914  
1 NR  
14.2x6.7x5.9 [cm]  
119.8 [g]

Vimar