



## Surface mounting components: By-alarm - Floor water detector

**01724**

Safety / By-alarm Plus / Surface mounting components / Non-modular components

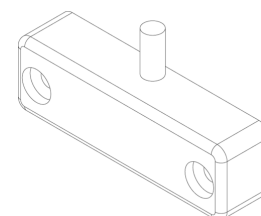
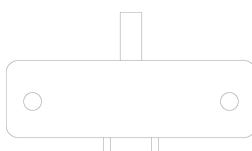
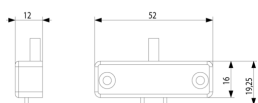
### By-alarm - Floor water detector

By-alarm water detector for protection against flooding, floor mounting

3 - Active

1 NR

- [Multilanguage instructions sheet \(322 kb\)](#)



3D

- **Class group:** Alarm installations, emergency call and signalling
- **Class:** Technical detector for danger detection system
- **Type of messaging:** Other
- **Indication:** Optical/acoustic
- **Operating voltage:** 12 V

- **Operating current:** 5 A
- **Colour:** Other
- **Height:** 19,25 mm
- **Width:** 52,00 mm
- **Depth:** 12,00 mm

- 00. CE Marking - EU
- 37. Marking - Morocco

- 43. UKCA mark - Great Britain
- 99. WEEE Directive ([download](#))



8007352548046  
1 NR  
12.2x7.9x3.3 [cm]  
78 [g]

Vimar