



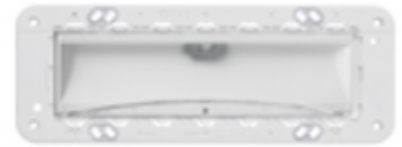
EIKON: LED emergency lamp 230V Eikon Evo 7M

02661

Wiring devices / Traditional wiring devices / EIKON / Devices

LED emergency lamp 230V Eikon Evo 7M

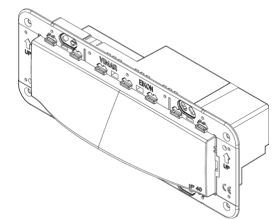
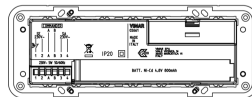
Emergency lighting device with high-efficiency LED, supply voltage 230 V~ 50-60 Hz, rechargeable Ni-Cd battery, built-in mounting frame for 6/7-module flush mounting boxes. To complete with Eikon Evo cover plate



3 - Active

1 NR

- [Multilanguage instructions sheet \(804 kb\)](#)



3D

- **Class group:** Luminaires
- **Class:** Emergency luminaire
- **Monitoring equipment:** None
- **With remote switch connection:** Yes
- **Power supply system:** Peripheral (individual battery)
- **Battery quality:** NiCd
- **Lamp type:** LED not exchangeable
- **With light source:** Yes
- **Housing colour:** White
- **Voltage type:** AC

- **Nominal voltage:** 230,00 - 230,01 V
- **Degree of protection (IP):** IP40
- **Protection class:** II
- **Max. system power:** 5,00 W
- **Rated luminous flux according to IEC 62722-2-1:** 75
- **Width:** 73,00 mm
- **Height/depth:** 72,50 mm
- **Length:** 197,00 mm
- **Built-in width:** 197,00 mm
- **Built-in height/depth:** 44,70 mm

- 00. CE Marking - EU
- 17. ENEC 03 (IMQ) ([download](#))
- 37. Marking - Morocco

- 43. UKCA mark - Great Britain
- 96. Electrotechnical expert ([download](#))
- 99. WEEE Directive ([download](#))



8007352424159
 1 NR
 22.5x9.7x10 [cm]
 393.5 [g]

Vimar