



Shared components: RJ45 Cat5e Netsafe UTP connector

03009.11

System infrastructure / Netsafe structured wiring / Shared components / Data connectors

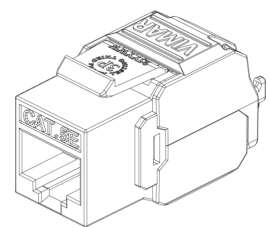
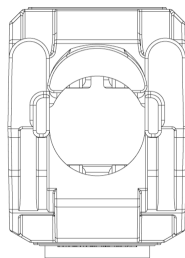
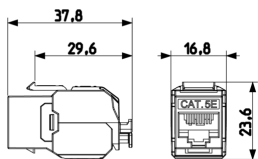
RJ45 Cat5e Netsafe UTP connector

RJ45 Cat.5e connector, unshielded, for 03024.E and 03303.E patch panels, T568A/B universal wiring, 8-contact, insulation-piercing terminals without tool use



3 - Active

8 NR



3D

- **Class group:** Data and telecommunication
- **Class:** Modular connector
- **Model:** Bus (jack)
- **Type of connector:** RJ45 8(8)
- **Screened:** No
- **Category:** 5E
- **Connection type:** Crimp

- **Special tool necessary:** No
- **Suitable for round cable:** Yes
- **Suitable for flat cable:** No
- **Suitable for litz wire conductor:** No
- **Suitable for solid conductors:** No
- **Colour:** Other
- **AWG-range:** 23 - 26

- 00. CE Marking - EU
- 24. FORCE Certificate ([download](#))

- 43. UKCA mark - Great Britain
- 99. WEEE Directive ([download](#))



8007352462724
1 NR
1.7x2.4x3.8 [cm]
9.7 [g]



8007352462731
8 NR
13.9x11.9x7.4 [cm]
127.1 [g]

Vimar