



Shared components: RJ45 Cat6 Netsafe UTP connector

03009.13

System infrastructure / Netsafe structured wiring / Shared components /
Data connectors

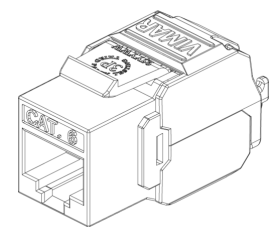
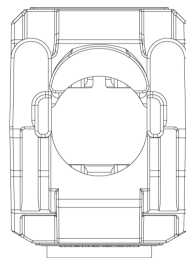
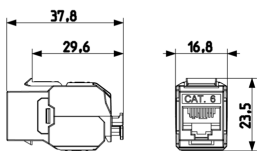
RJ45 Cat6 Netsafe UTP connector

RJ45 connector, cat. 6, unshielded, for patch pannels 03024.E and 03303.E,
T568A/B universal wiring, 8 contacts, insulation-piercing terminals without
tool use



3 - Active

8 NR



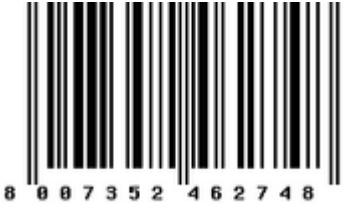
3D

- **Class group:** Data and telecommunication
- **Class:** Modular connector
- **Model:** Bus (jack)
- **Type of connector:** RJ45 8(8)
- **Screened:** No
- **Category:** 6
- **Connection type:** Crimp

- **Special tool necessary:** No
- **Suitable for round cable:** Yes
- **Suitable for flat cable:** No
- **Suitable for litz wire conductor:** No
- **Suitable for solid conductors:** No
- **Colour:** Other
- **AWG-range:** 23 - 26

- 00. CE Marking - EU
- 24. FORCE Certificate ([download](#))

- 43. UKCA mark - Great Britain
- 99. WEEE Directive ([download](#))



8007352462748
1 NR
1.7x2.4x3.8 [cm]
9.5 [g]



8007352462755
8 NR
13.9x11.9x7.4 [cm]
126.9 [g]

Vimar