



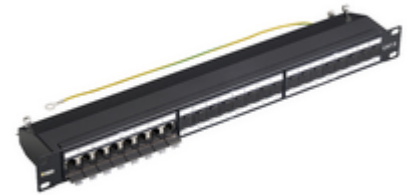
## Surface mounting components: Patch panel - 24 RJ45 Cat6 FTP conn.1u

### 03024.7

System infrastructure / Netsafe structured wiring / Surface mounting components / Carpentry

#### Patch panel - 24 RJ45 Cat6 FTP conn.1u

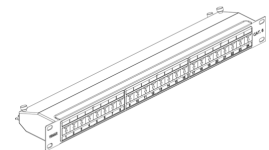
19 in patch panel with 24 RJ45 Cat. 6 connectors, shielded, T568A/B universal wiring, 8-contact, 110 type insulation-piercing terminals - 1 rack unit



3 - Active

1 NR

- [Multilanguage instructions sheet \(1019 kb\)](#)



3D

- **Class group:** Data and telecommunication
- **Class:** Patch panel copper (twisted pair)
- **Number of buses/couplings:** 24
- **Suitable for number of connectors:** 24
- **Type of connector:** RJ45 8(8)
- **Screened:** Yes
- **Category:** 6
- **Connection type:** 110

- **Number of height units:** 1
- **Colour:** Other
- **RAL-number:** 0
- **Mounting method:** 482.6 mm (19 inch) mounting
- **Height:** 44,00 mm
- **Width:** 482,60 mm
- **Depth:** 104,80 mm

- 00. CE Marking - EU
- 43. UKCA mark - Great Britain

- 99. WEEE Directive ([download](#))



8 007352 469112

8007352469112  
1 NR  
53.3x15.2x5.5 [cm]  
1,656.4 [g]

Vimar